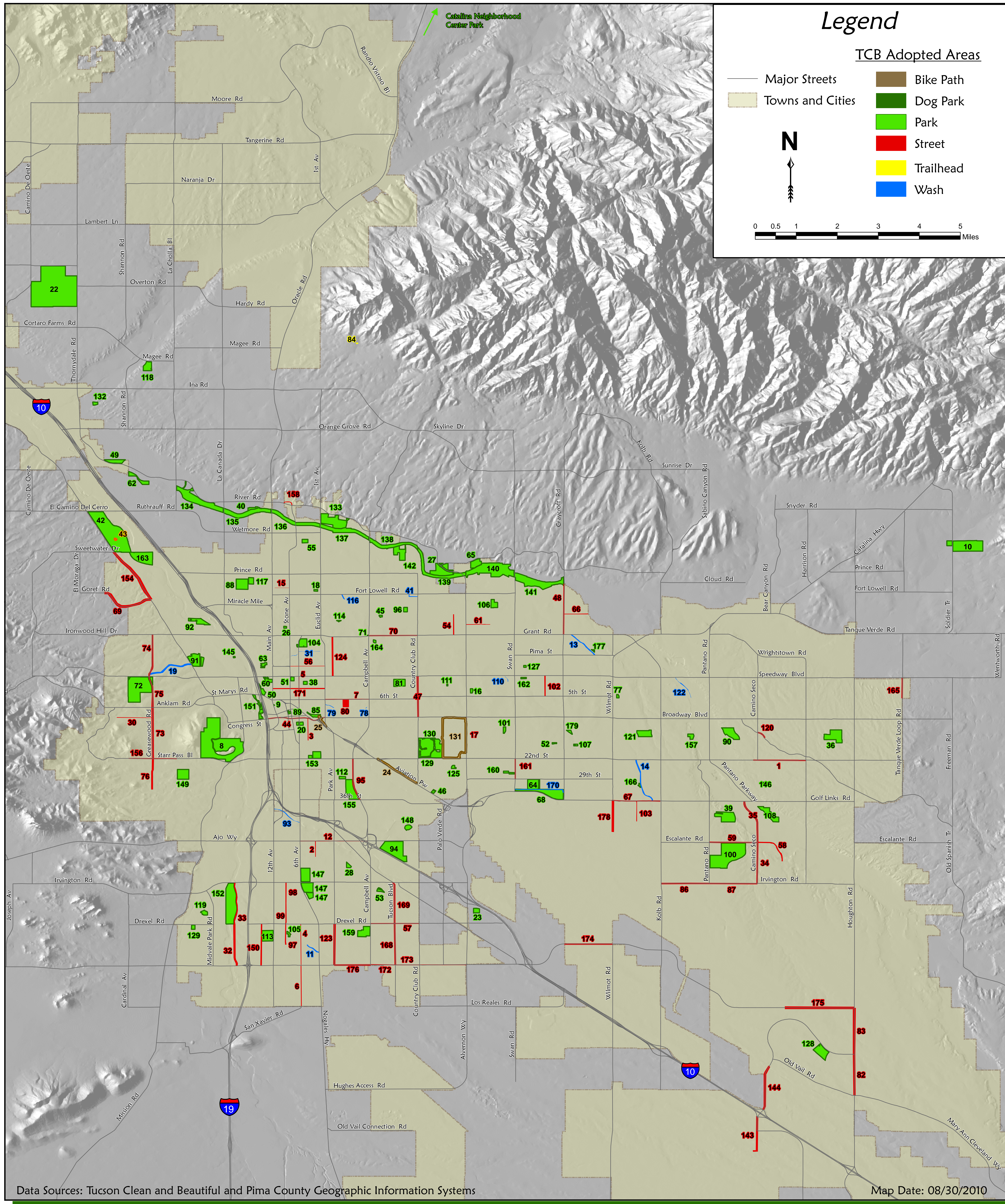


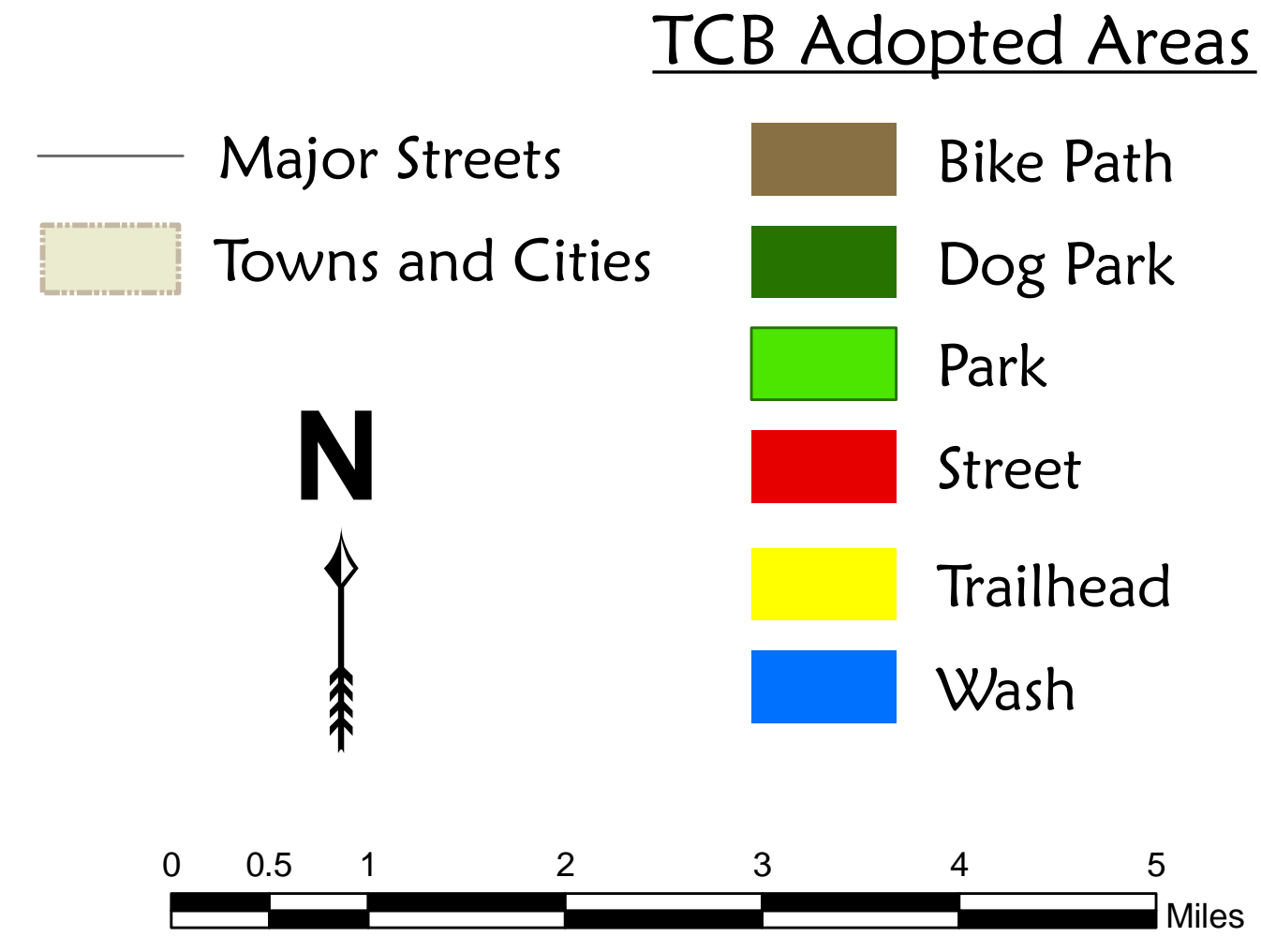


# TUCSON CLEAN & BEAUTIFUL INC.

## Adopt-a-Park and Public Areas



### Legend



### Why Do Parks and Public Areas Need to be Adopted?

City and county government budgets are not large enough to resolve the litter problem in our community. That is why Tucson Clean & Beautiful (TCB) began implementing a model Adopt-a-Park program in 1984. Tucson Clean & Beautiful works in partnership with both City and County governments to help maintain Tucson's beautiful environment. Sincere community commitment, involvement and ownership have made this program highly successful. 178 public areas including parks, streets, and washes are now adopted by dedicated citizens of all ages.



### Who Can Adopt a Park or Public Area?

Any recognized community group willing to make an ongoing volunteer commitment throughout the year may participate. Civic associations, schools, neighborhoods, churches, military, scout and other community groups as well as businesses have made an ongoing commitment to clean up and control litter.



### What Commitment Must an Adoptive Group Make?

We ask for a commitment to conduct a cleanup and monitor the adopted site twice each month. Volunteer work report forms are provided to record volunteer hours and for easy notification if repairs are needed or if unsafe conditions exist at the adopted site, especially any dangerous or unsafe conditions, vandalism, or graffiti. These reports help TCB ensure that each site is clean and appropriately maintained as a positive community resource for all to use. If reporting forms are not received on a regular basis, TCB asks the group leader to renew its commitment or to let another group adopt the site.



### How Do We Sign Up?

Call Tucson Clean & Beautiful at 791-3109 to request an Interest Form for the Adopt-a-Park and Public Areas Program. Tucson Clean & Beautiful will help you get started and select an appropriate park or public site.



Data Sources: Tucson Clean and Beautiful and Pima County Geographic Information Systems

Map Date: 08/30/2010

### Tucson Clean & Beautiful Adopted Parks and Public Areas

- |   |   |                                |   |   |                                      |                              |
|---|---|--------------------------------|---|---|--------------------------------------|------------------------------|
| 1 22nd St.  | 27 Brandi Fenton Memorial Park                      | 53 Desert Shadows Park         | 79 High School Wash                       | 105 Manuel Herrera Jr. Park (Fiesta Park) | 130 Reid Park (SW area)              | 155 Silverlake Park          |
| 2 2nd Ave.  | 28 Bravo Park                                       | 54 Dodge Blvd.                 | 80 Highland to Santa Rita                 | 106 McCormick Park                        | 131 Reid Park/Randolph Park -        | 156 Starr Pass Blvd.         |
| 3 4th Ave.  | 29 Bristol Park                                     | 55 Don Hummel Park             | 81 Himmel Park                            | 107 Mesa Village Park                     | 132 Richardson Park                  | 157 Stefan Gollob Park       |
| 4 6th Ave.  | 30 Broadway Blvd.                                   | 56 Drachman St.                | 82 Houghton Rd.                           | 108 Michael Perry Park                    | 133 Rillito Park                     | 158 Stone Loop               |
| 5 6th Ave.  | 31 Bronx Wash                                       | 57 Drexel Wash                 | 83 Houghton Rd.                           | 109 Midway Wash                           | 134 Rillito River Linear Park 03     | 159 Sunnyside Park           |
| 6 6th Ave.  | 32 Calle Santa Cruz                                 | 58 Escalante Rd.               | 84 Iris O. Dewhirst Pima Canyon Trailhead | 110 Miramonte Neighborhood Park           | 135 Rillito River Linear Park 04     | 160 Swan Park                |
| 7 6th St.   | 33 Calle Santa Cruz                                 | 59 Escalante Rd.               | 85 Iron Horse Park                        | 111 Miramonte Neighborhood Park           | 136 Rillito River Linear Park 05     | 161 Swan Rd.                 |
| 8 A Mountain Sentinel Peak Park                   | 34 Camino Seco                                      | 60 Estevan Park                | 86 Irvington Rd.                          | 112 Miramonte Neighborhood Park           | 137 Rillito River Linear Park 06     | 162 Swanway Park             |
| 9 A. Smith Sculpture Garden                       | 35 Camino Seco                                      | 61 Flower St.                  | 87 Irvington Rd.                          | 113 Mission Manor Park                    | 138 Rillito River Linear Park 07     | 163 Sweetwater Wetlands Park |
| 10 Agua Caliente Park                             | 36 Case Natural Resources Park                      | 62 Flowing Wells District Park | 88 Jacobs Park                            | 114 Mitchell Park                         | 139 Rillito River Linear Park 08     | 164 Tahoe Park               |
| 11 Airport Wash                                   | 37 Catalina Neighborhood Center Park                | 63 Francisco Elias Esquer Park | 89 Jacome Plaza                           | 115 Murray Halberg Community Park         | 140 Rillito River Linear Park 09     | 165 Tanque Verde Loop Rd     |
| 12 Ajo Way  | 38 Catalina Park                                    | 64 Freedom Park                | 90 Jesse Owens Park                       | 116 Navajo Wash                           | 141 Rillito River Linear Park 10     | 166 Terra del Sol Park       |
| 13 Alamo Wash 4                                   | 39 Charles Ford Lakeside Center                     | 65 George Mehl Foothills Park  | 91 Joaquin Murrieta Park                  | 117 Nicolas P Ochoa Soccer Complex        | 142 Rio Vista Natural Resources Park | 167 Trails End Wash          |
| 14 Alamo Wash 8                                   | 40 Children's Memorial Park                         | 66 Glenn St.                   | 92 Juhon Park                             | 118 Northwest Community Park              | 143 Rita Rd.                         | 168 Tucson Blvd.             |
| 15 Alley s of Amphitheater High School            | 41 Christmas Wash                                   | 67 Golf Links Rd.              | 93 Julian Wash Linear Park                | 119 Oak Tree Park                         | 144 Rita Rd.                         | 169 Tucson Blvd.             |
| 16 Alvernon Park                                  | 42 Christopher Columbus Park                        | 68 Golf Links Sports Park      | 94 Kino Complex/Tucson Electric Park      | 120 Old Spanish Trail                     | 145 Riverview Park                   | 170 Tucson Diversion Channel |
| 17 Alvernon Way                                   | 43 Christopher Columbus Dog Park                    | 69 Gore Rd.                    | 95 Kino Pkwy.                             | 121 Palo Verde Park                       | 146 Rolling Hills Park               | 171 University Blvd.         |
| 18 Amphi Neighborhood Park                        | 44 Congress St. and Broadway Blvd.                  | 70 Grant Rd.                   | 96 La Madera Park                         | 122 Park Ave.                             | 147 Rudy Garcia (Rodeo) Park         | 172 Valencia Rd.             |
| 19 Anklam Wash                                    | 45 Conner Park                                      | 71 Jefferson Park              | 97 Liberty Ave.                           | 123 Park Ave.                             | 148 Sam Lena Park                    | 173 Valencia Rd.             |
| 20 Armory Park (east - Senior Center)             | 46 Country Club Annex Park                          | 72 Greasewood Park             | 98 Liberty Ave.                           | 124 Park Ave.                             | 149 San Juan Park/Fred Archer Center | 174 Valencia Rd.             |
| 21 Armory Park (west - Children's Museum Grounds) | 47 Country Club Rd.                                 | 73 Greasewood Rd.              | 99 Liberty Ave.                           | 125 Parkview Park                         | 150 Santa Clara Ave.                 | 175 Valencia Rd.             |
| 22 Arthur Pack Park                               | 48 Craycroft Rd.                                    | 74 Greasewood Rd.              | 100 Lincoln Park                          | 126 Picture Rocks District Park           | 151 Santa Cruz River Park            | 176 Valencia Rd.             |
| 23 Augie Acuna Los Ninos Park                     | 49 Dan Felix Memorial District Park                 | 75 Greasewood Rd.              | 101 Linden Park                           | 127 Pinecrest Park                        | 152 Santa Cruz River Park 12         | 177 Villa Serena Park        |
| 24 Aviation Bike Path                             | 50 David G. Herrera & Ramon Quiroz Park (Oury Park) | 76 Greasewood Rd.              | 102 Magnolia Ave.                         | 128 Purple Heart Park                     | 153 Santa Rita Park                  | 178 Wilmot Rd.               |
| 25 Aviation Bike Path                             | 51 De Anza Park                                     | 77 Harold Bell Wright Park     | 103 Mann Ave.                             | 129 Raul Grijalva Park                    | 154 Silverbell Rd.                   | 179 Wilshire Heights Park    |
| 26 Balboa Heights (Marty Birdman) Park            | 52 Desert Aire Park                                 | 78 High School Wash            | 104 Mansfield Park                        |   |                                      |                              |



Mapping support provided by:  
**TERRASYSTEMS SOUTHWEST, INC.**  
 Geographic Information Systems Solutions  
 738 N. Fifth Avenue, Suite 203 • Tucson, Arizona 85705  
 (520) 322-0334 • www.terras.com

