

# ARIZONA

INDEPENDENT REDISTRICTING COMMISSION

## Comment Form for Adopted Draft Map / Forma para Comentario cerca de Mapa Preliminar Adoptado

The Adopted Draft Maps are available for public comment through Saturday, December 4, 2021. After this period, the Arizona Independent Redistricting Commission will meet to finalize the boundaries for Arizona's 9 congressional and 30 state legislative districts.

Los mapas preliminares adoptados están disponibles para comentarios públicos hasta el sábado 4 de diciembre de 2021. Después de este período, la Comisión Independiente de Redistribución de Distritos de Arizona se reunirá para finalizar los límites de los 9 del Congreso y los 30 distritos legislativos estatales de Arizona.

1. If relevant, please circle the area on the map corresponding to your comments.

Si es relevante, marque con un círculo el área en el mapa correspondiente a sus comentarios.

2. District number for Congressional (CD) or legislative (LD) map / LD2

Número de distrito para Mapa del Congreso (CD) o legislativo (LD) LD7

3. Your name / Su nombre (optional / opcional):

Jane Evans

4. Community of residence / comunidad de residencia:

Payson

5. Are you with an organization? ¿Estás con una organización? Yes/Si  No

a. Are you a paid representative? ¿Eres un representante pagado? Yes/Si  No

b. Name of organization / Nombre de la organización: \_\_\_\_\_

Comments / Comentarios:

I support this map.

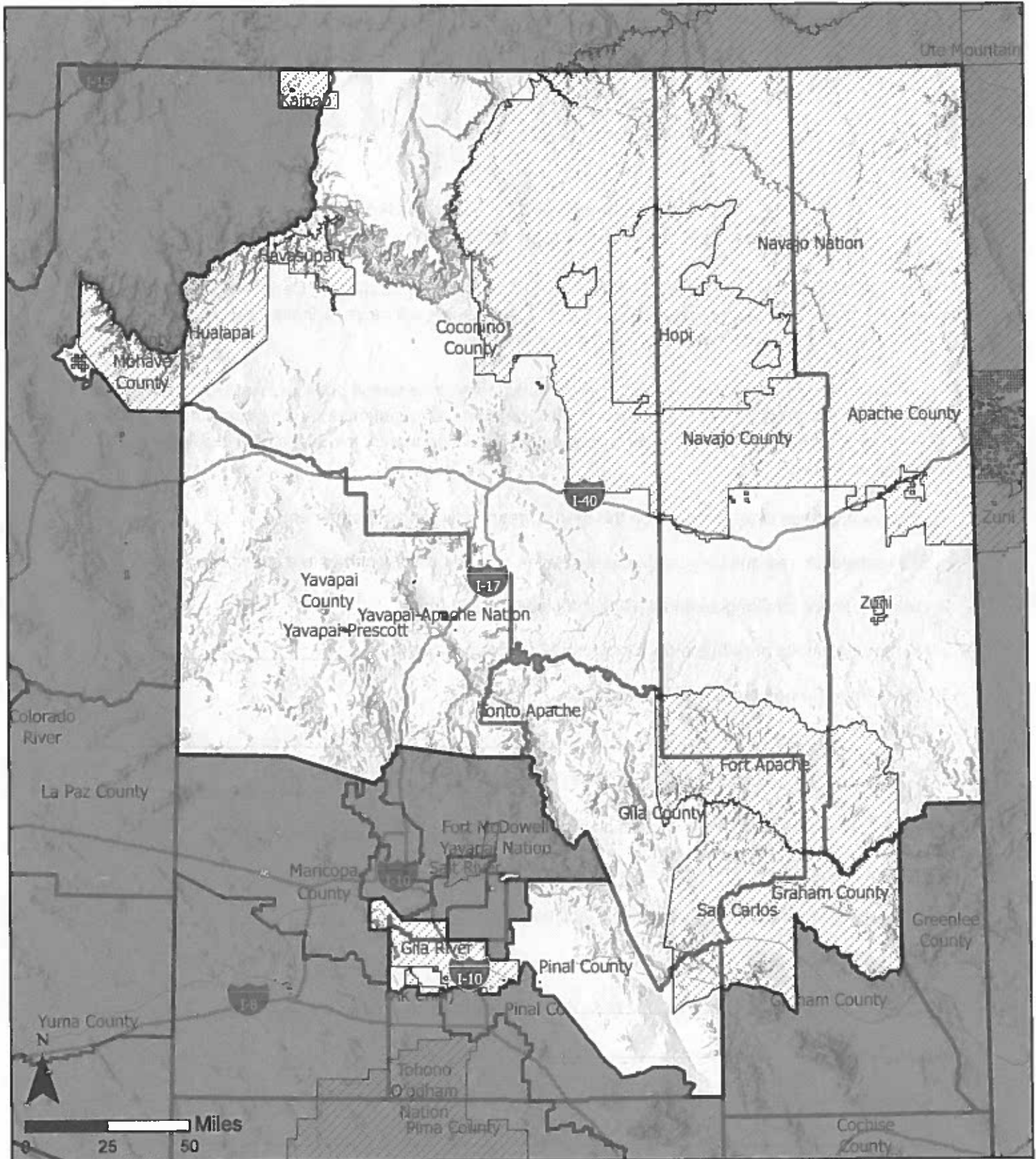
\_\_\_\_\_

\_\_\_\_\_

\_\_\_\_\_




\_\_\_\_\_

\_\_\_\_\_



## AZ Approved Draft Map Congressional District: 2

This plan was officially adopted on October 28, 2021 as the official Congressional Draft Map. For more information on the methodology used to create these boundaries, please visit: <https://redistricting-irc-az.hub.arcgis.com/pages/draft-maps>

-  Approved Draft Map Congressional Districts
-  Arizona Tribal Reservations
-  Arizona Counties

**ARIZONA**  
INDEPENDENT REDISTRICTING COMMISSION



# ARIZONA

INDEPENDENT REDISTRICTING COMMISSION

## Comment Form for Adopted Draft Map / Forma para Comentario cerca de Mapa Preliminar Adoptado

The Adopted Draft Maps are available for public comment through Saturday, December 4, 2021. After this period, the Arizona Independent Redistricting Commission will meet to finalize the boundaries for Arizona's 9 congressional and 30 state legislative districts.

Los mapas preliminares adoptados están disponibles para comentarios públicos hasta el sábado 4 de diciembre de 2021. Después de este período, la Comisión Independiente de Redistribución de Distritos de Arizona se reunirá para finalizar los límites de los 9 del Congreso y los 30 distritos legislativos estatales de Arizona.

1. If relevant, please circle the area on the map corresponding to your comments.

Si es relevante, marque con un círculo el área en el mapa correspondiente a sus comentarios.

2. District number for Congressional (CD) or legislative (LD) map /

Número de distrito para Mapa del Congreso (CD) o legislativo (LD) 7

3. Your name / Su nombre (optional / opcional):

4. Community of residence / comunidad de residencia: Payson

5. Are you with an organization? ¿Estás con una organización? Yes/Si -  No

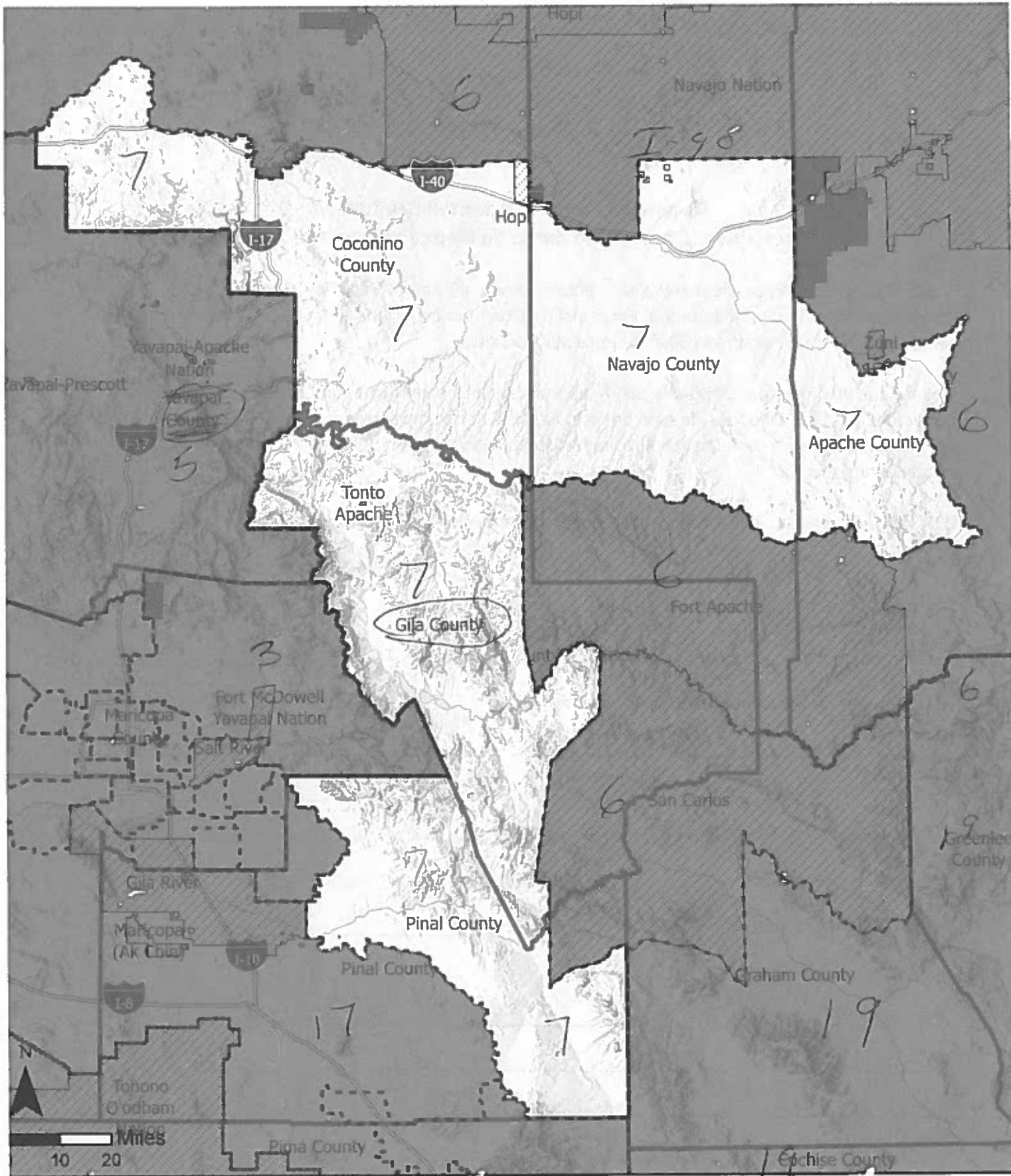
a. Are you a paid representative? ¿Eres un representante pagado? Yes/Si -  No

b. Name of organization / Nombre de la organización: \_\_\_\_\_

Comments / Comentarios:

Community of Interest is Pinal Az<sup>o</sup> Forest (fires),  
Water, Ranching, farming, and mining. I like the  
map on the front and wish that would be my district  
Community of Interest Flagstaff and Navajo nation:  
Medical, Behavioral Health, shopping, residence, and  
Education for Navajo nation.

(over / siguiente)

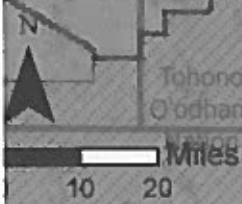


## AZ Approved Draft Map Legislative District: 7

This plan was officially adopted on October 28, 2021 as the official Legislative Draft Map. <https://redistricting-irc-az.hub.arcgis.com/pages/draft-maps>

- Approved Draft Map Legislative District
- Arizona Counties
- Arizona Tribal Reservations

**ARIZONA**  
INDEPENDENT REDISTRICTING COMMISSION





# ARIZONA

INDEPENDENT REDISTRICTING COMMISSION

## Comment Form for Adopted Draft Map / Forma para Comentario cerca de Mapa Preliminar Adoptado

The Adopted Draft Maps are available for public comment through Saturday, December 4, 2021. After this period, the Arizona Independent Redistricting Commission will meet to finalize the boundaries for Arizona's 9 congressional and 30 state legislative districts.

Los mapas preliminares adoptados están disponibles para comentarios públicos hasta el sábado 4 de diciembre de 2021. Después de este período, la Comisión Independiente de Redistribución de Distritos de Arizona se reunirá para finalizar los límites de los 9 del Congreso y los 30 distritos legislativos estatales de Arizona.

1. If relevant, please circle the area on the map corresponding to your comments.

Si es relevante, marque con un círculo el área en el mapa correspondiente a sus comentarios.

2. District number for Congressional (CD) or legislative (LD) map /

Número de distrito para Mapa del Congreso (CD) o legislativo (LD) 7

3. Your name / Su nombre (optional / opcional):

Jerome M. Beeler

4. Community of residence / comunidad de residencia:

Payson

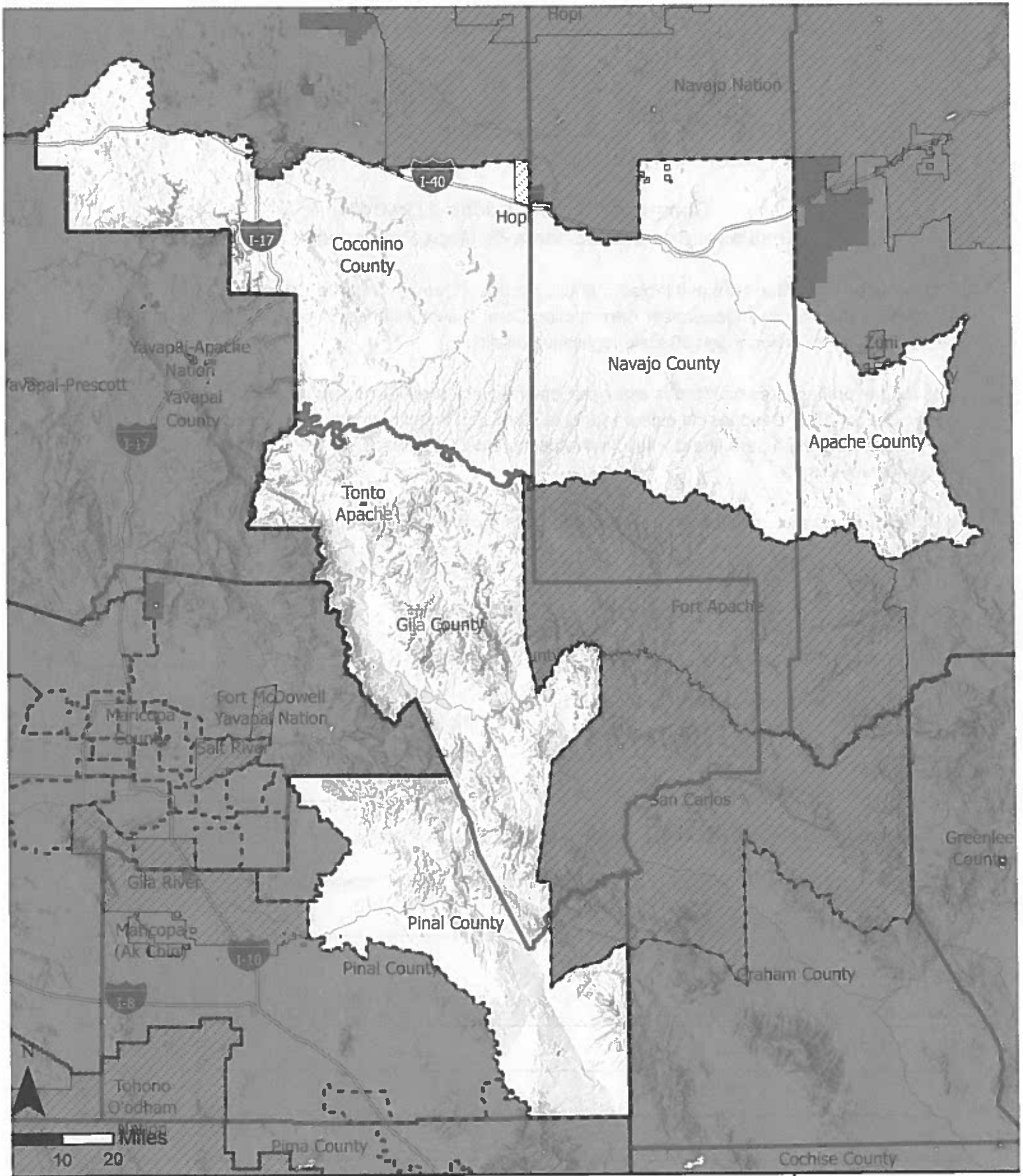
5. Are you with an organization? ¿Estás con una organización? Yes/Si  No

a. Are you a paid representative? ¿Eres un representante pagado? Yes/Si  No

b. Name of organization / Nombre de la organización: \_\_\_\_\_




Comments / Comentarios:

Keep Flagstaff out as well as Navajo Nation



## AZ Approved Draft Map Legislative District: 7

This plan was officially adopted on October 28, 2021 as the official Legislative Draft Map. <https://redistricting-irc-az.hub.arcgis.com/pages/draft-maps>

-  Approved Draft Map Legislative District
-  Arizona Counties
-  Arizona Tribal Reservations

**ARIZONA**  
INDEPENDENT REDISTRICTING COMMISSION



# ARIZONA

INDEPENDENT REDISTRICTING COMMISSION

## Comment Form for Adopted Draft Map / Forma para Comentario cerca de Mapa Preliminar Adoptado

The Adopted Draft Maps are available for public comment through Saturday, December 4, 2021. After this period, the Arizona Independent Redistricting Commission will meet to finalize the boundaries for Arizona's 9 congressional and 30 state legislative districts.

Los mapas preliminares adoptados están disponibles para comentarios públicos hasta el sábado 4 de diciembre de 2021. Después de este período, la Comisión Independiente de Redistribución de Distritos de Arizona se reunirá para finalizar los límites de los 9 del Congreso y los 30 distritos legislativos estatales de Arizona.

1. If relevant, please circle the area on the map corresponding to your comments.

Si es relevante, marque con un círculo el área en el mapa correspondiente a sus comentarios.

2. District number for Congressional (CD) or legislative (LD) map /

Número de distrito para Mapa del Congreso (CD) o legislativo (LD) District 7

3. Your name / Su nombre (optional / opcional):

Helen Hebert

4. Community of residence / comunidad de residencia: Payson

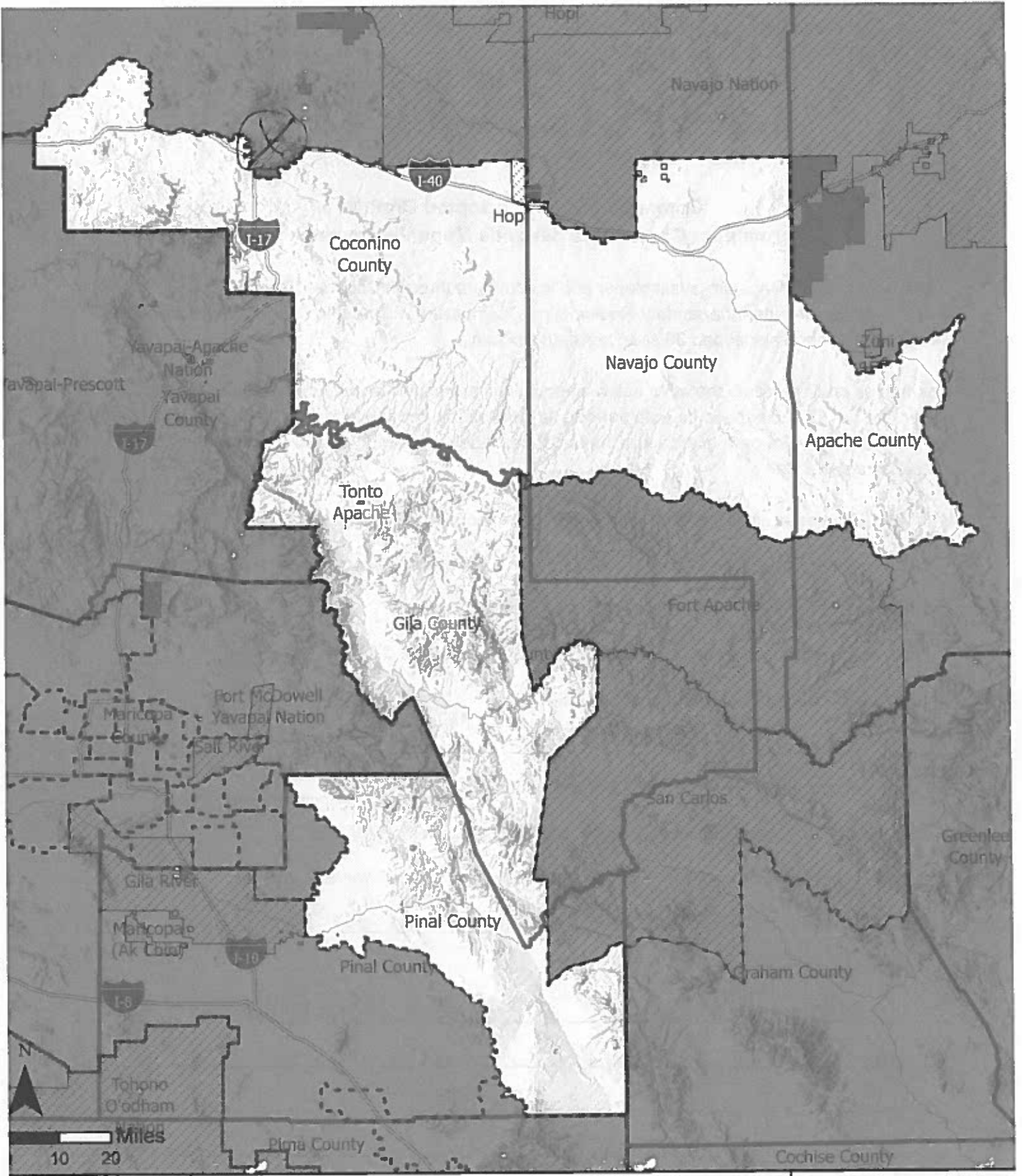
5. Are you with an organization? ¿Estás con una organización?  Yes/Si - No

a. Are you a paid representative? ¿Eres un representante pagado? Yes/Si -  No

b. Name of organization / Nombre de la organización: Payson Tea Party - Republican


Comments / Comentarios:

Please keep District 7 as you have proposed on your map  
We Do NOT Want Flagstaff included!



## AZ Approved Draft Map Legislative District: 7

This plan was officially adopted on October 28, 2021 as the official Legislative Draft Map. <https://redistricting-irc-az.hub.arcgis.com/pages/draft-maps>

-  Approved Draft Map Legislative District
-  Arizona Counties
-  Arizona Tribal Reservations

**ARIZONA**  
INDEPENDENT REDISTRICTING COMMISSION





# ARIZONA

INDEPENDENT REDISTRICTING COMMISSION

## Comment Form for Adopted Draft Map / Forma para Comentario cerca de Mapa Preliminar Adoptado

The Adopted Draft Maps are available for public comment through Saturday, December 4, 2021. After this period, the Arizona Independent Redistricting Commission will meet to finalize the boundaries for Arizona's 9 congressional and 30 state legislative districts.

Los mapas preliminares adoptados están disponibles para comentarios públicos hasta el sábado 4 de diciembre de 2021. Después de este periodo, la Comisión Independiente de Redistribución de Distritos de Arizona se reunirá para finalizar los límites de los 9 del Congreso y los 30 distritos legislativos estatales de Arizona.

1. If relevant, please circle the area on the map corresponding to your comments.

Si es relevante, marque con un círculo el área en el mapa correspondiente a sus comentarios.

2. District number for Congressional (CD) or legislative (LD) map /

Número de distrito para Mapa del Congreso (CD) o legislativo (LD)

District 7

3. Your name / Su nombre (optional / opcional):

Dayton Hickson

4. Community of residence / comunidad de residencia:

Payson

5. Are you with an organization? ¿Estás con una organización?  Yes/Si - No

Payson Tea Party

a. Are you a paid representative? ¿Eres un representante pagado? Yes/Si -  No

b. Name of organization / Nombre de la organización:

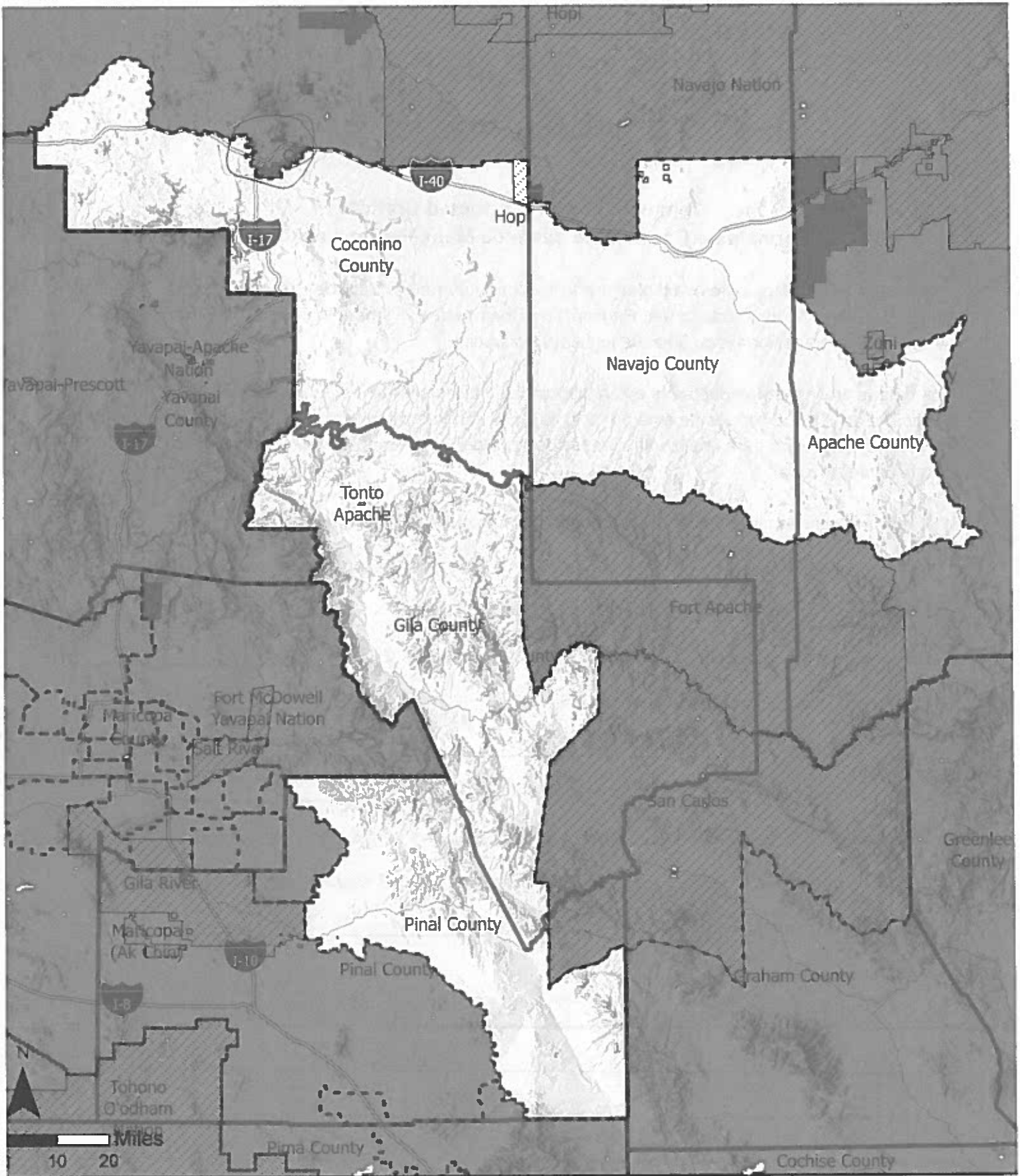
Payson Tea Party

Comments / Comentarios:

Please Reex District 7 as is

Do Not Flagstaff included

(over / siguiente)



## AZ Approved Draft Map Legislative District: 7

This plan was officially adopted on October 28, 2021 as the official Legislative Draft Map. <https://redistricting-irc-az.hub.arcgis.com/pages/draft-maps>

- Approved Draft Map Legislative District
- Arizona Counties
- Arizona Tribal Reservations

**ARIZONA**  
INDEPENDENT REDISTRICTING COMMISSION

# ARIZONA

INDEPENDENT REDISTRICTING COMMISSION

## Comment Form for Adopted Draft Map / Forma para Comentario cerca de Mapa Preliminar Adoptado

The Adopted Draft Maps are available for public comment through Saturday, December 4, 2021. After this period, the Arizona Independent Redistricting Commission will meet to finalize the boundaries for Arizona's 9 congressional and 30 state legislative districts.

Los mapas preliminares adoptados están disponibles para comentarios públicos hasta el sábado 4 de diciembre de 2021. Después de este período, la Comisión Independiente de Redistribución de Distritos de Arizona se reunirá para finalizar los límites de los 9 del Congreso y los 30 distritos legislativos estatales de Arizona.

1. If relevant, please circle the area on the map corresponding to your comments.

Si es relevante, marque con un círculo el área en el mapa correspondiente a sus comentarios.

2. District number for Congressional (CD) or legislative (LD) map /

Número de distrito para Mapa del Congreso (CD) o legislativo (LD) \_\_\_\_\_

3. Your name / Su nombre (optional / opcional):

\_\_\_\_\_ MAR GAREY Susan Oliver \_\_\_\_\_

4. Community of residence / comunidad de residencia: Tonto Basin \_\_\_\_\_

5. Are you with an organization? ¿Estás con una organización? Yes/Si  No

a. Are you a paid representative? ¿Eres un representante pagado? Yes/Si  No

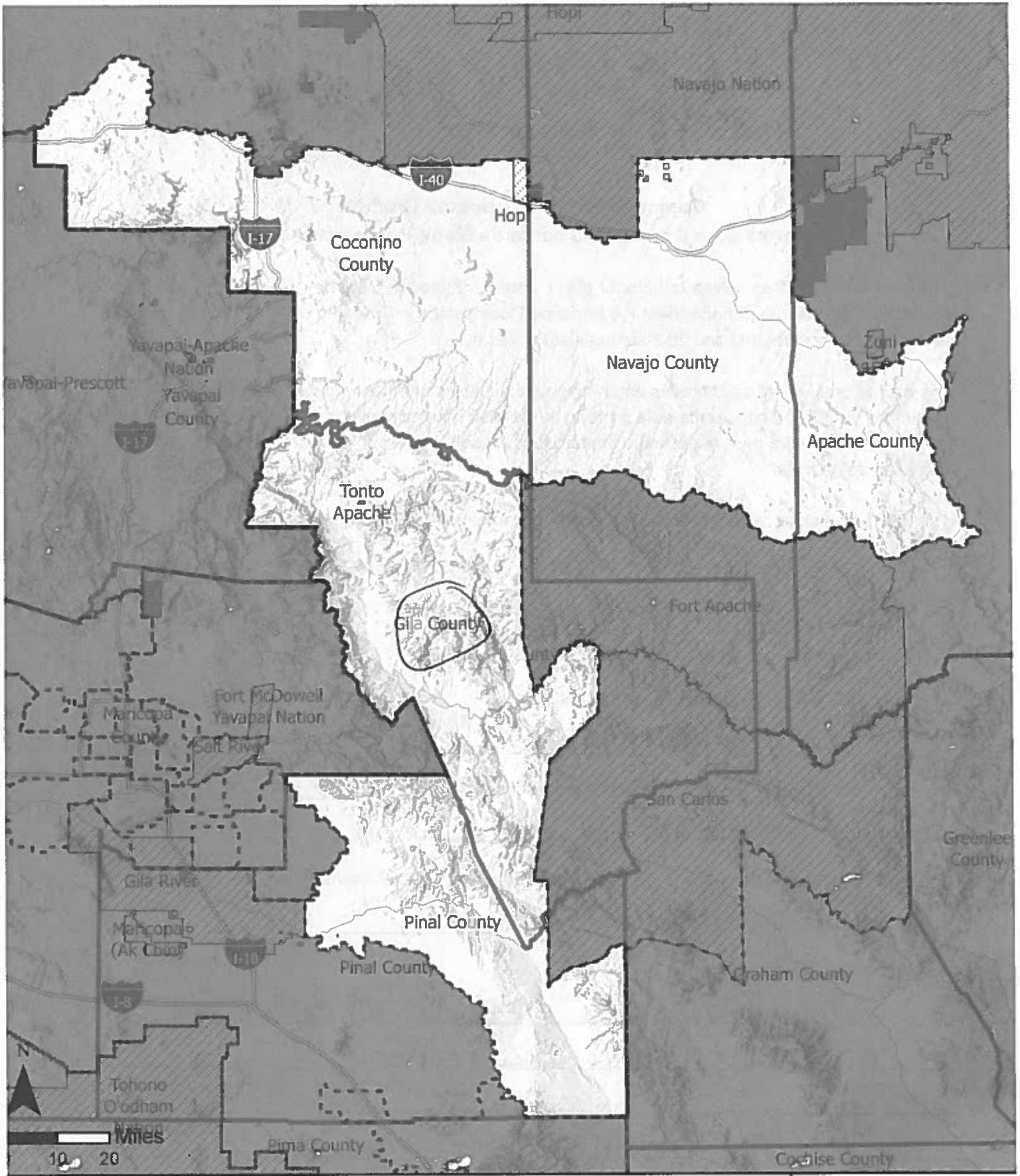
b. Name of organization / Nombre de la organización: \_\_\_\_\_

Comments / Comentarios:

\_\_\_\_\_ I support the commission's latest map \_\_\_\_\_  
\_\_\_\_\_ for district 7, the Gila County \_\_\_\_\_




\_\_\_\_\_ we don't want Flagstaff in our district \_\_\_\_\_  
\_\_\_\_\_ we don't support pushing District 7 \_\_\_\_\_  
\_\_\_\_\_ onto the reservation \_\_\_\_\_

(over / siguiente)



## AZ Approved Draft Map Legislative District: 7

This plan was officially adopted on October 28, 2021 as the official Legislative Draft Map. <https://redistricting-irc-az.hub.arcgis.com/pages/draft-maps>

-  Approved Draft Map Legislative District
-  Arizona Counties
-  Arizona Tribal Reservations

**ARIZONA**  
INDEPENDENT REDISTRICTING COMMISSION





Thank you for the opportunity to speak today and for listening to us this summer when we spoke of a rural community of interest district. The commission has spent many months listening to the public and working on the maps. The last draft maps show a balanced version that can serve Arizona for the next decade. I support the latest 10.2 draft maps.

Welcome to Rim Country. My name is Pam Derks and I live in Payson, also known as the Heart of Arizona.

I would like to note that Rim Country and the White Mountains are not the Colorado Plateau. As the Discover Flagstaff website states:

**“Flagstaff is in the heart of the Colorado Plateau, a region known for its rich Native American history. Evidence of the earliest native cultures in the Flagstaff area can be found in the cliff dwellings of Walnut Canyon National Monument and the rock-walled pueblos of Wupatki National Monument where the ancient Sinagua and Anasazi tribes inhabited more than 800 years ago. ”**

More importantly the article continues:

**“This Native American heritage still permeates the culture today, as tribal lands cover more than 31,000 square miles (49,890 km<sup>2</sup>) in this region and are home to the Navajo, Hopi, Havasupai, Kaibab-Paiute and Hualapai peoples. To learn more about the uniquely diverse Native cultures of the Colorado Plateau, visit Flagstaff’s world-renowned Museum of Northern Arizona.”**

On November 3, 2021, an article in the Navajo-Hopi Observer News website which states —Proudly serving the Navajo and Hopi Nations, Flagstaff and Winslow, AZ—The Flagstaff City Council is considering beginning their meetings with an acknowledgement of Native tribes in the region.

The Council **“humbly acknowledges the ancestral homelands of this area's Indigenous nations and original stewards. These lands, still inhabited by Native descendants, border mountains sacred to Indigenous peoples. We honor them, their legacies, their traditions, and their continued contributions. We celebrate their past, present, and future generations who will forever know this place as home.”**

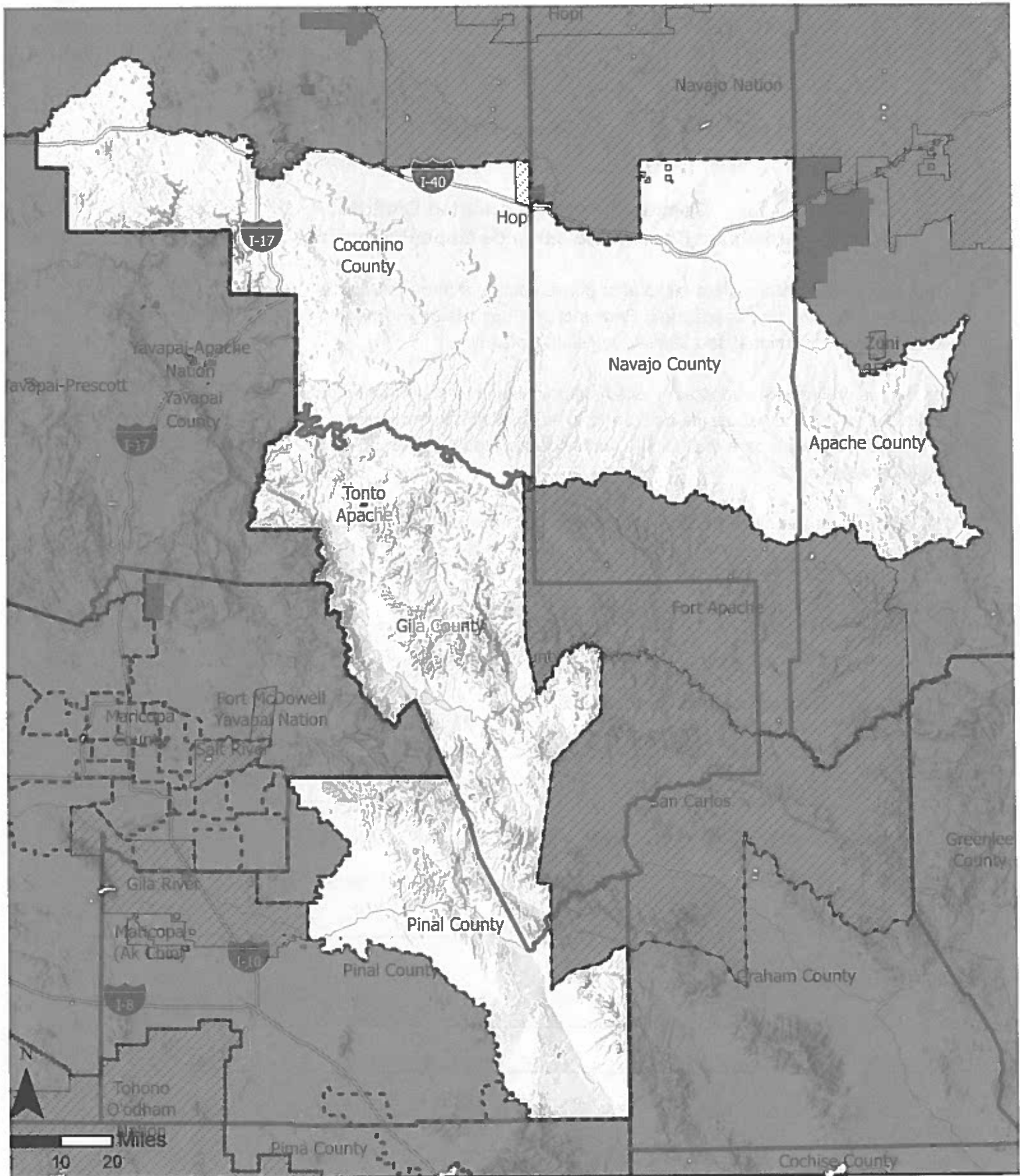
It is important to our rural communities of interest to not be placed with the large metro areas. Our voices will be diluted, as we are not a suburb of Flagstaff or Phoenix or do not have a community of interest with the Tribal nations.

Please accept my support for the current balanced 10.2 maps.

December 1, 2021

Payson, AZ



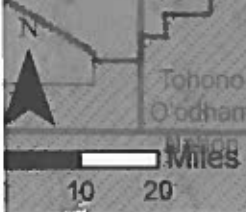


## AZ Approved Draft Map Legislative District: 7

This plan was officially adopted on October 28, 2021 as the official Legislative Draft Map. <https://redistricting-irc-az.hub.arcgis.com/pages/draft-maps>

-  Approved Draft Map Legislative District
-  Arizona Counties
-  Arizona Tribal Reservations

**ARIZONA**  
INDEPENDENT REDISTRICTING COMMISSION



# ARIZONA

INDEPENDENT REDISTRICTING COMMISSION

## Comment Form for Adopted Draft Map / Forma para Comentario cerca de Mapa Preliminar Adoptado

The Adopted Draft Maps are available for public comment through Saturday, December 4, 2021. After this period, the Arizona Independent Redistricting Commission will meet to finalize the boundaries for Arizona's 9 congressional and 30 state legislative districts.

Los mapas preliminares adoptados están disponibles para comentarios públicos hasta el sábado 4 de diciembre de 2021. Después de este período, la Comisión Independiente de Redistribución de Distritos de Arizona se reunirá para finalizar los límites de los 9 del Congreso y los 30 distritos legislativos estatales de Arizona.

1. If relevant, please circle the area on the map corresponding to your comments.

Si es relevante, marque con un círculo el área en el mapa correspondiente a sus comentarios.

2. District number for Congressional (CD) or legislative (LD) map /

Número de distrito para Mapa del Congreso (CD) o legislativo (LD) LD7

3. Your name / Su nombre (optional / opcional):

Jane Evans

4. Community of residence / comunidad de residencia: Payson

5. Are you with an organization? ¿Estás con una organización? Yes/Si  No

a. Are you a paid representative? ¿Eres un representante pagado? Yes/Si  No

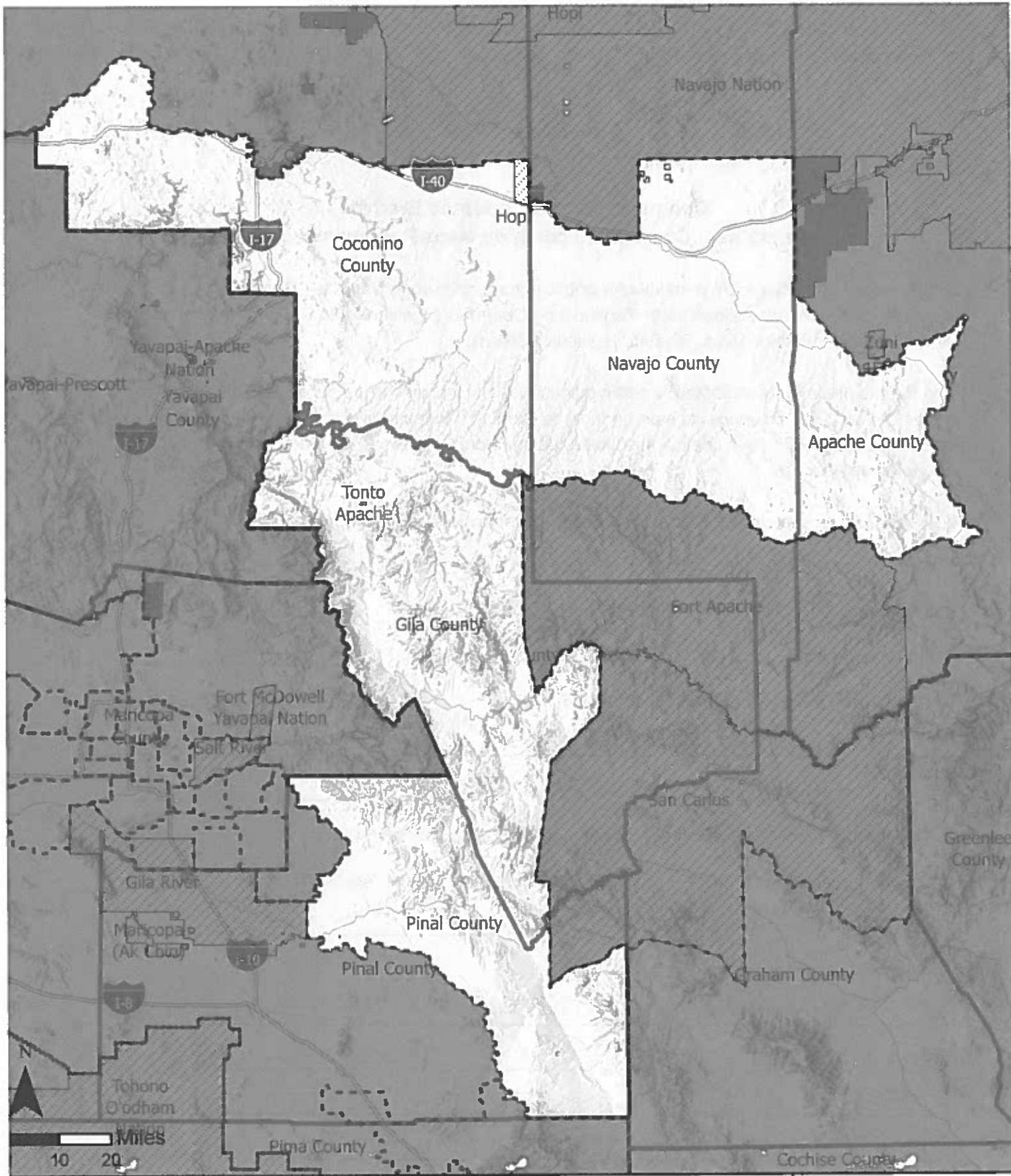
b. Name of organization / Nombre de la organización: \_\_\_\_\_

Comments / Comentarios:

I support the map as shown. Please do not put us in with Flagstaff or the reservation, we have no community of interest with them. We need to stay with the rural D.2 map as shown




(over / siguiente)





## AZ Approved Draft Map Legislative District: 7

This plan was officially adopted on October 28, 2021 as the official Legislative Draft Map. <https://redistricting-irc-az.hub.arcgis.com/pages/draft-maps>

-  Approved Draft Map Legislative District
-  Arizona Counties
-  Arizona Tribal Reservations

**ARIZONA**  
INDEPENDENT REDISTRICTING COMMISSION



# ARIZONA

INDEPENDENT REDISTRICTING COMMISSION

## Comment Form for Adopted Draft Map / Forma para Comentario cerca de Mapa Preliminar Adoptado

The Adopted Draft Maps are available for public comment through Saturday, December 4, 2021. After this period, the Arizona Independent Redistricting Commission will meet to finalize the boundaries for Arizona's 9 congressional and 30 state legislative districts.

Los mapas preliminares adoptados están disponibles para comentarios públicos hasta el sábado 4 de diciembre de 2021. Después de este período, la Comisión Independiente de Redistribución de Distritos de Arizona se reunirá para finalizar los límites de los 9 del Congreso y los 30 distritos legislativos estatales de Arizona.

1. If relevant, please circle the area on the map corresponding to your comments.

Si es relevante, marque con un círculo el área en el mapa correspondiente a sus comentarios.

2. District number for Congressional (CD) or legislative (LD) map /

CD 2

Número de distrito para Mapa del Congreso (CD) o legislativo (LD)

LD 7

3. Your name / Su nombre (optional / opcional):

Betty Leau

4. Community of residence / comunidad de residencia:

PAYSON AZ

5. Are you with an organization? ¿Estás con una organización? Yes/Si  No

a. Are you a paid representative? ¿Eres un representante pagado? Yes/Si -  No

b. Name of organization / Nombre de la organización:

Comments / Comentarios:

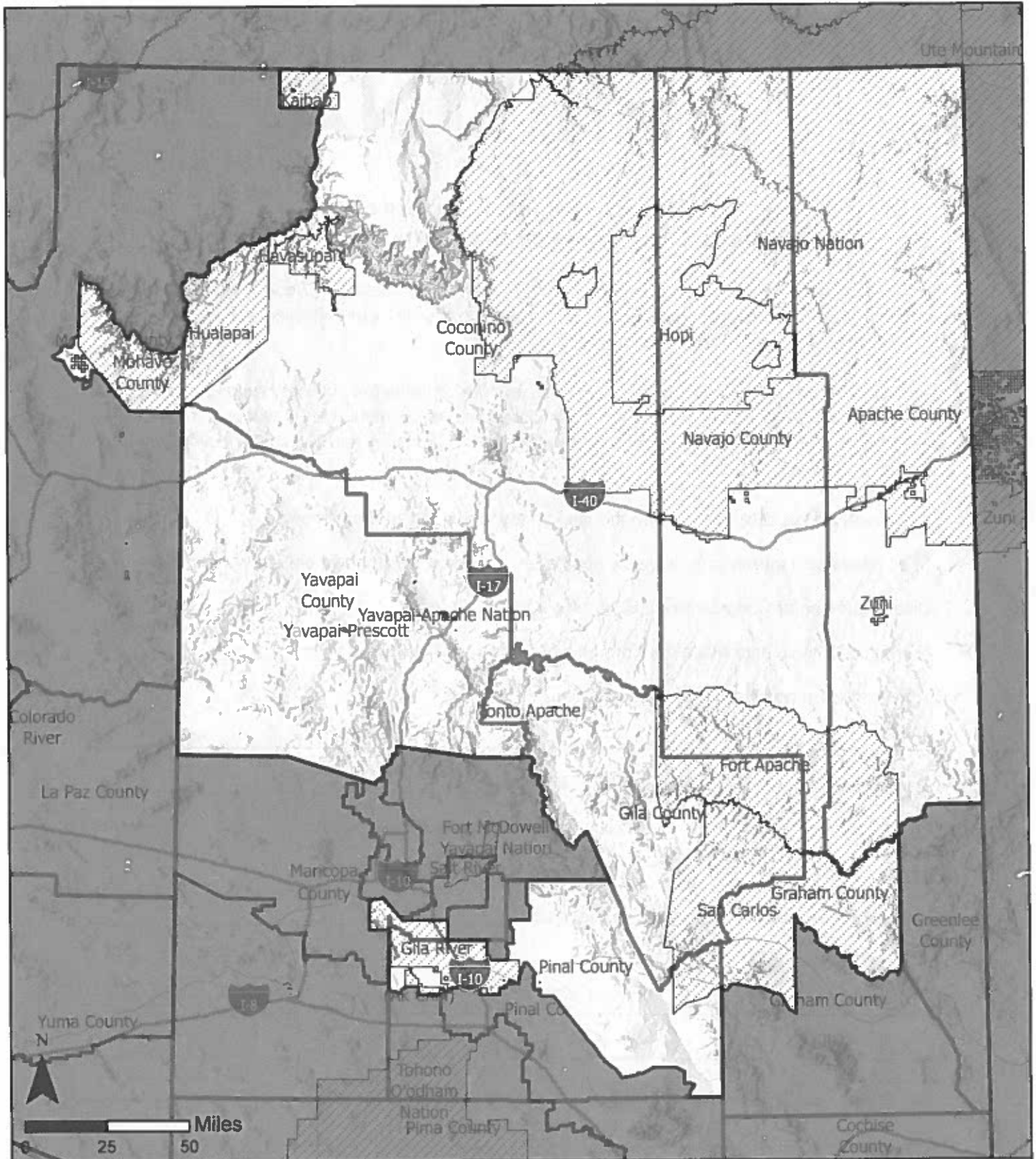
I DO NOT want to BE grouped  
with Flagstaff or pushed into the  
Reservation.

we support this map AS DRAWN

KEEP our Rural district Rural




(over / siguiente)

SUPPORT  
MAP 10.2



## AZ Approved Draft Map Congressional District: 2

This plan was officially adopted on October 28, 2021 as the official Congressional Draft Map. For more information on the methodology used to create these boundaries, please visit: <https://redistricting-irc-az.hub.arcgis.com/pages/draft-maps>

-  Approved Draft Map Congressional Districts
-  Arizona Tribal Reservations
-  Arizona Counties

**ARIZONA**  
INDEPENDENT REDISTRICTING COMMISSION



# ARIZONA

INDEPENDENT REDISTRICTING COMMISSION

## Comment Form for Adopted Draft Map / Forma para Comentario cerca de Mapa Preliminar Adoptado

The Adopted Draft Maps are available for public comment through Saturday, December 4, 2021. After this period, the Arizona Independent Redistricting Commission will meet to finalize the boundaries for Arizona's 9 congressional and 30 state legislative districts.

Los mapas preliminares adoptados están disponibles para comentarios públicos hasta el sábado 4 de diciembre de 2021. Después de este período, la Comisión Independiente de Redistribución de Distritos de Arizona se reunirá para finalizar los límites de los 9 del Congreso y los 30 distritos legislativos estatales de Arizona.

1. If relevant, please circle the area on the map corresponding to your comments.

Si es relevante, marque con un círculo el área en el mapa correspondiente a sus comentarios.

2. District number for Congressional (CD) or legislative (LD) map /

Número de distrito para Mapa del Congreso (CD) o legislativo (LD)

CD 2  
LD 7

3. Your name / Su nombre (optional / opcional):

BLEON

4. Community of residence / comunidad de residencia:

PAYSON AZ

5. Are you with an organization? ¿Estás con una organización? Yes/Si  No

a. Are you a paid representative? ¿Eres un representante pagado? Yes/Si  No

b. Name of organization / Nombre de la organización:

Comments / Comentarios:

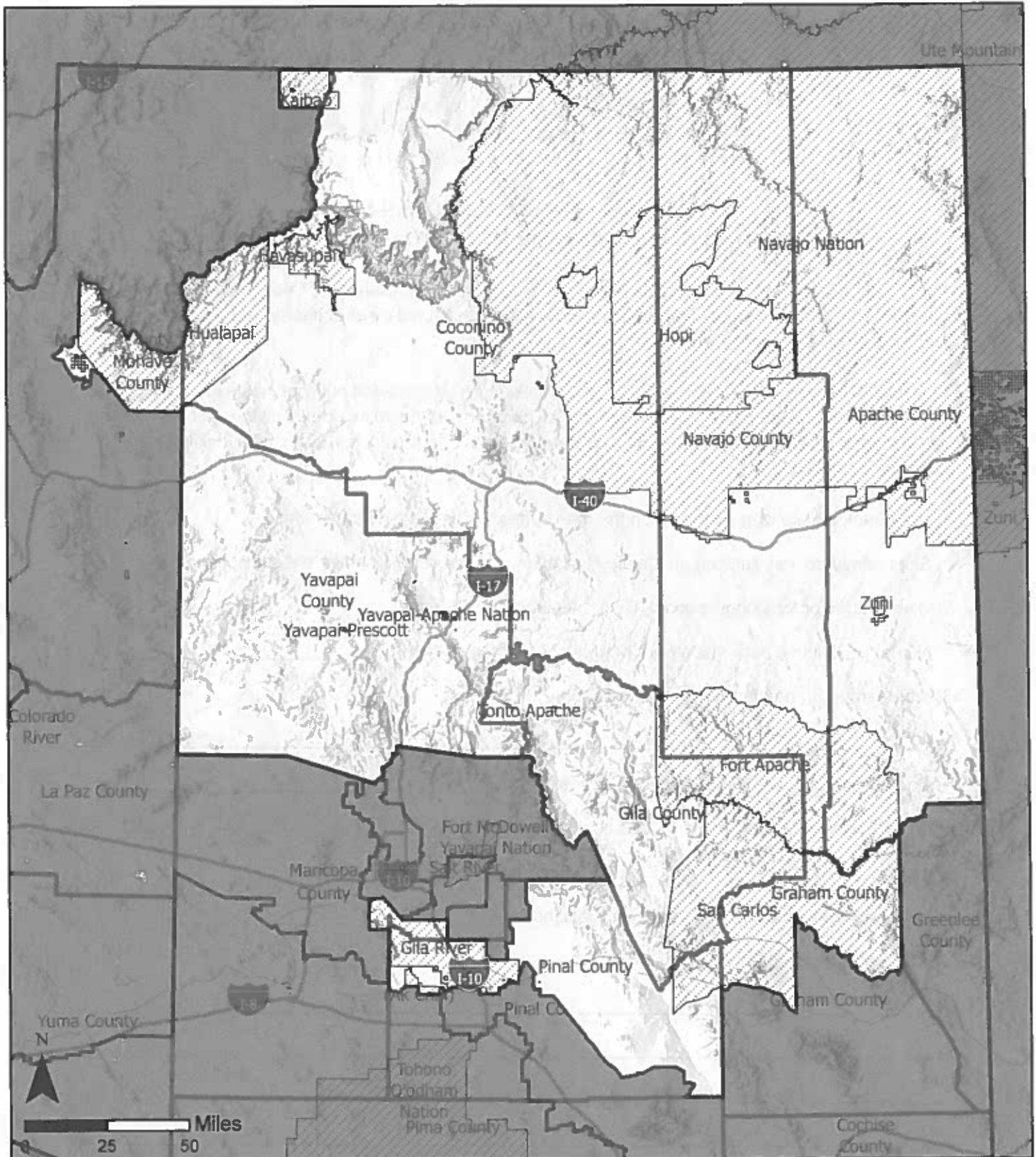
(PAYSON AREA)  
We do not support being grouped  
with Flagstaff or drawn into  
Reservation

We strongly support keeping Payson  
Rural

(over / siguiente)




Support  
map 10.2





## AZ Approved Draft Map Congressional District: 2

This plan was officially adopted on October 28, 2021 as the official Congressional Draft Map. For more information on the methodology used to create these boundaries, please visit: <https://redistricting-irc-az.hub.arcgis.com/pages/draft-maps>

-  Approved Draft Map Congressional Districts
-  Arizona Tribal Reservations
-  Arizona Counties

**ARIZONA**  
INDEPENDENT REDISTRICTING COMMISSION



# ARIZONA

INDEPENDENT REDISTRICTING COMMISSION

## Comment Form for Adopted Draft Map / Forma para Comentario cerca de Mapa Preliminar Adoptado

The Adopted Draft Maps are available for public comment through Saturday, December 4, 2021. After this period, the Arizona Independent Redistricting Commission will meet to finalize the boundaries for Arizona's 9 congressional and 30 state legislative districts.

Los mapas preliminares adoptados están disponibles para comentarios públicos hasta el sábado 4 de diciembre de 2021. Después de este período, la Comisión Independiente de Redistribución de Distritos de Arizona se reunirá para finalizar los límites de los 9 del Congreso y los 30 distritos legislativos estatales de Arizona.

1. If relevant, please circle the area on the map corresponding to your comments.

Si es relevante, marque con un círculo el área en el mapa correspondiente a sus comentarios.

2. District number for Congressional (CD) or legislative (LD) map / CD 2  
Número de distrito para Mapa del Congreso (CD) o legislativo (LD) LD 7

3. Your name / Su nombre (optional / opcional):  
KAY LLOYD COOL

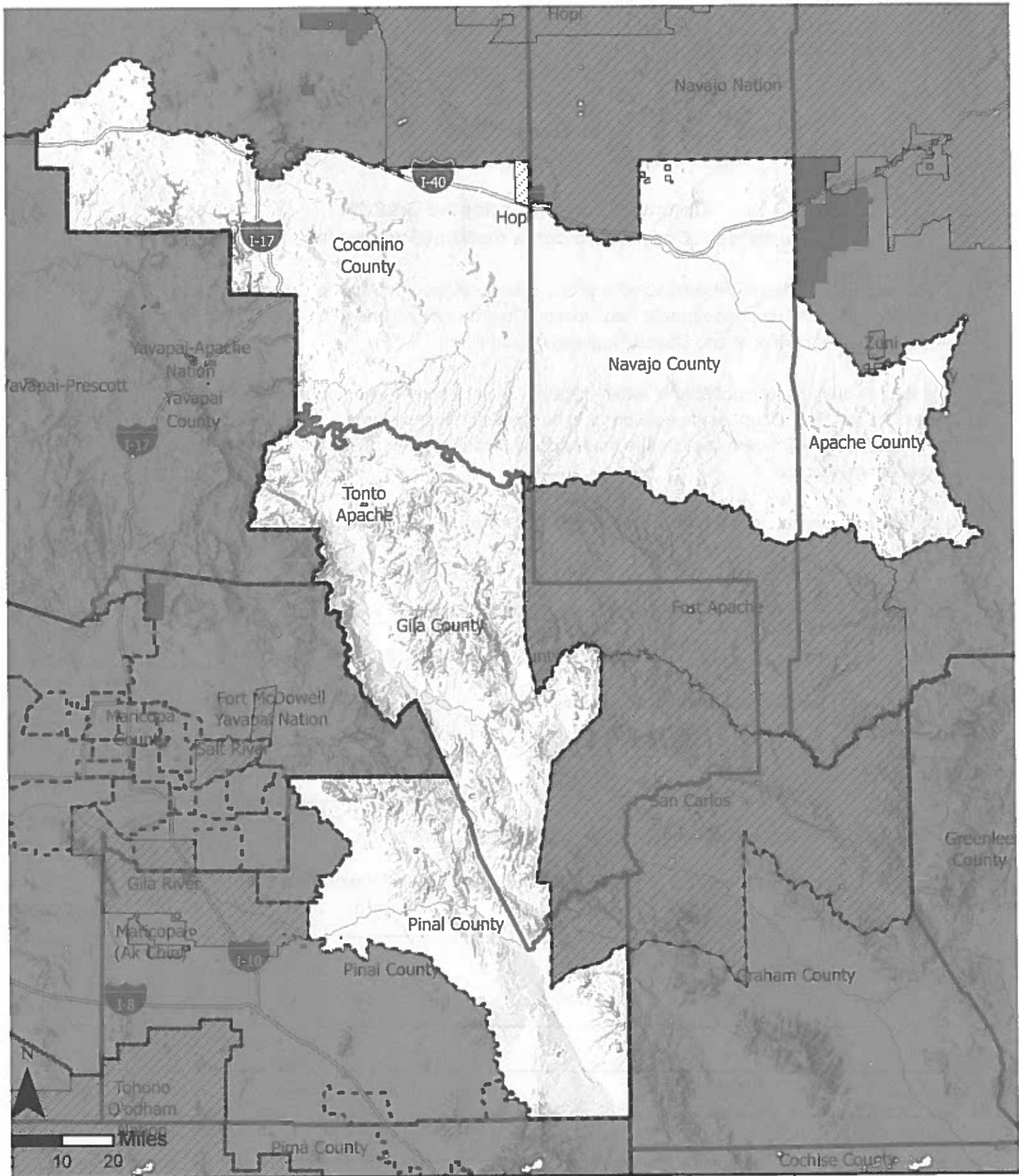
4. Community of residence / comunidad de residencia: Payson, AZ

5. Are you with an organization? ¿Estás con una organización? Yes/Si  No

a. Are you a paid representative? ¿Eres un representante pagado? Yes/Si  No




b. Name of organization / Nombre de la organización: \_\_\_\_\_

Comments / Comentarios:  
\_\_\_\_\_  
\_\_\_\_\_  
\_\_\_\_\_  
\_\_\_\_\_  
\_\_\_\_\_

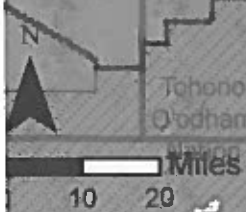
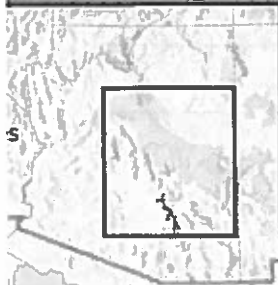


## AZ Approved Draft Map Legislative District: 7

This plan was officially adopted on October 28, 2021 as the official Legislative Draft Map. <https://redistricting-irc-az.hub.arcgis.com/pages/draft-maps>

-  Approved Draft Map Legislative District
-  Arizona Counties
-  Arizona Tribal Reservations

**ARIZONA**  
INDEPENDENT REDISTRICTING COMMISSION



# ARIZONA

INDEPENDENT REDISTRICTING COMMISSION

## Comment Form for Adopted Draft Map / Forma para Comentario cerca de Mapa Preliminar Adoptado

The Adopted Draft Maps are available for public comment through Saturday, December 4, 2021. After this period, the Arizona Independent Redistricting Commission will meet to finalize the boundaries for Arizona's 9 congressional and 30 state legislative districts.

Los mapas preliminares adoptados están disponibles para comentarios públicos hasta el sábado 4 de diciembre de 2021. Después de este período, la Comisión Independiente de Redistribución de Distritos de Arizona se reunirá para finalizar los límites de los 9 del Congreso y los 30 distritos legislativos estatales de Arizona.

1. If relevant, please circle the area on the map corresponding to your comments.

Si es relevante, marque con un círculo el área en el mapa correspondiente a sus comentarios.

2. District number for Congressional (CD) or legislative (LD) map / LD 7  
Número de distrito para Mapa del Congreso (CD) o legislativo (LD) CD 2

3. Your name / Su nombre (optional / opcional):

KAY LLOYD COOL

4. Community of residence / comunidad de residencia: Payson

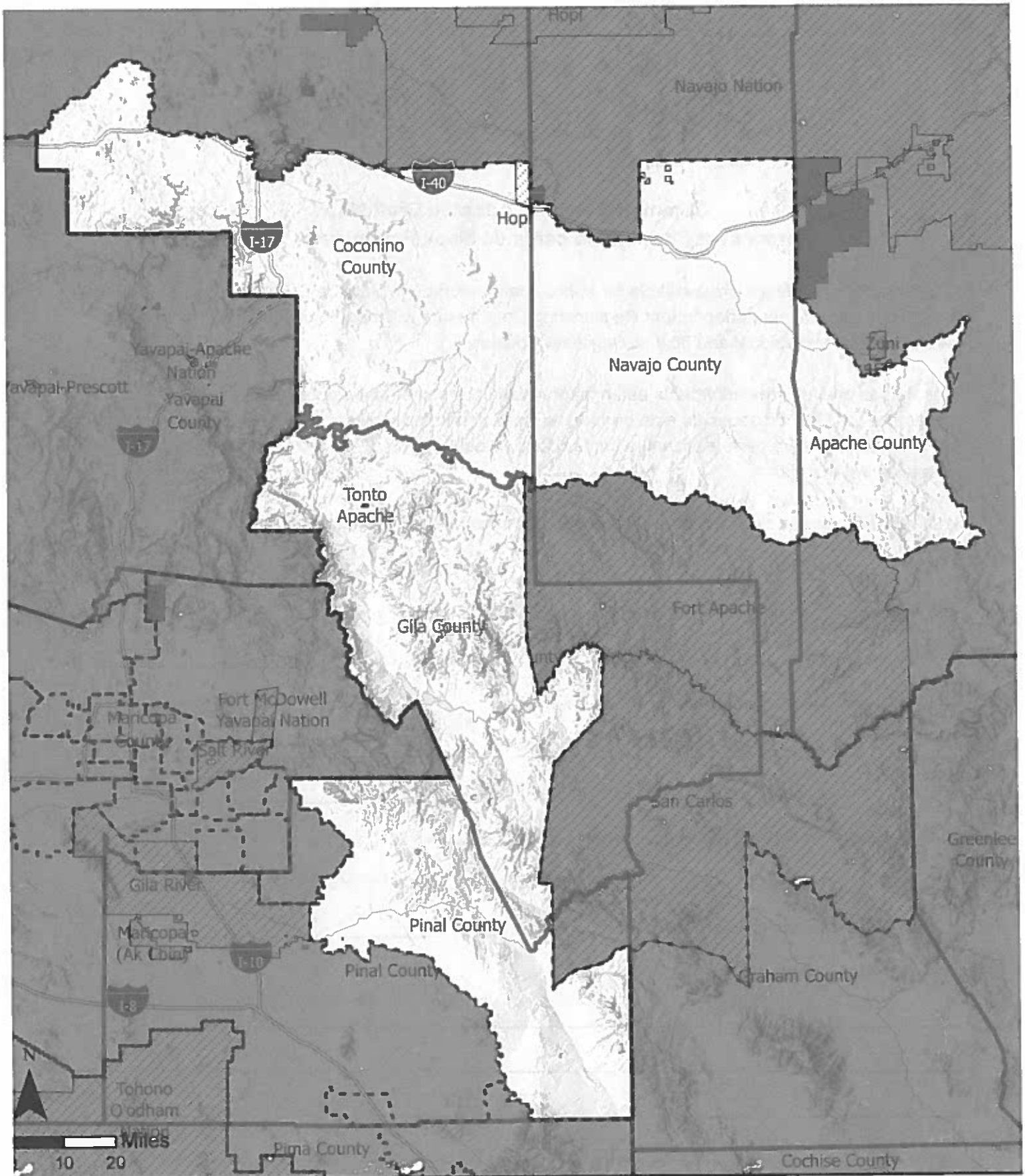
5. Are you with an organization? ¿Estás con una organización? Yes/Si - No

a. Are you a paid representative? ¿Eres un representante pagado? Yes/Si - No

b. Name of organization / Nombre de la organización: \_\_\_\_\_




Comments / Comentarios:  
\_\_\_\_\_  
\_\_\_\_\_  
\_\_\_\_\_  
\_\_\_\_\_  
\_\_\_\_\_





## AZ Approved Draft Map Legislative District: 7

This plan was officially adopted on October 28, 2021 as the official Legislative Draft Map. <https://redistricting-irc-az.hub.arcgis.com/pages/draft-maps>

-  Approved Draft Map Legislative District
-  Arizona Counties
-  Arizona Tribal Reservations

**ARIZONA**  
INDEPENDENT REDISTRICTING COMMISSION



# ARIZONA

INDEPENDENT REDISTRICTING COMMISSION

## Comment Form for Adopted Draft Map / Forma para Comentario cerca de Mapa Preliminar Adoptado

The Adopted Draft Maps are available for public comment through Saturday, December 4, 2021. After this period, the Arizona Independent Redistricting Commission will meet to finalize the boundaries for Arizona's 9 congressional and 30 state legislative districts.

Los mapas preliminares adoptados están disponibles para comentarios públicos hasta el sábado 4 de diciembre de 2021. Después de este período, la Comisión Independiente de Redistribución de Distritos de Arizona se reunirá para finalizar los límites de los 9 del Congreso y los 30 distritos legislativos estatales de Arizona.

1. If relevant, please circle the area on the map corresponding to your comments.

Si es relevante, marque con un círculo el área en el mapa correspondiente a sus comentarios.

2. District number for Congressional (CD) or legislative (LD) map /

LD 7

Número de distrito para Mapa del Congreso (CD) o legislativo (LD)

CD 2

3. Your name / Su nombre (optional / opcional):

Vicki Cool

4. Community of residence / comunidad de residencia:

Payson

5. Are you with an organization? ¿Estás con una organización? Yes/Si -  No

a. Are you a paid representative? ¿Eres un representante pagado? Yes/Si -  No

b. Name of organization / Nombre de la organización:

Comments / Comentarios:

---

---

---

---

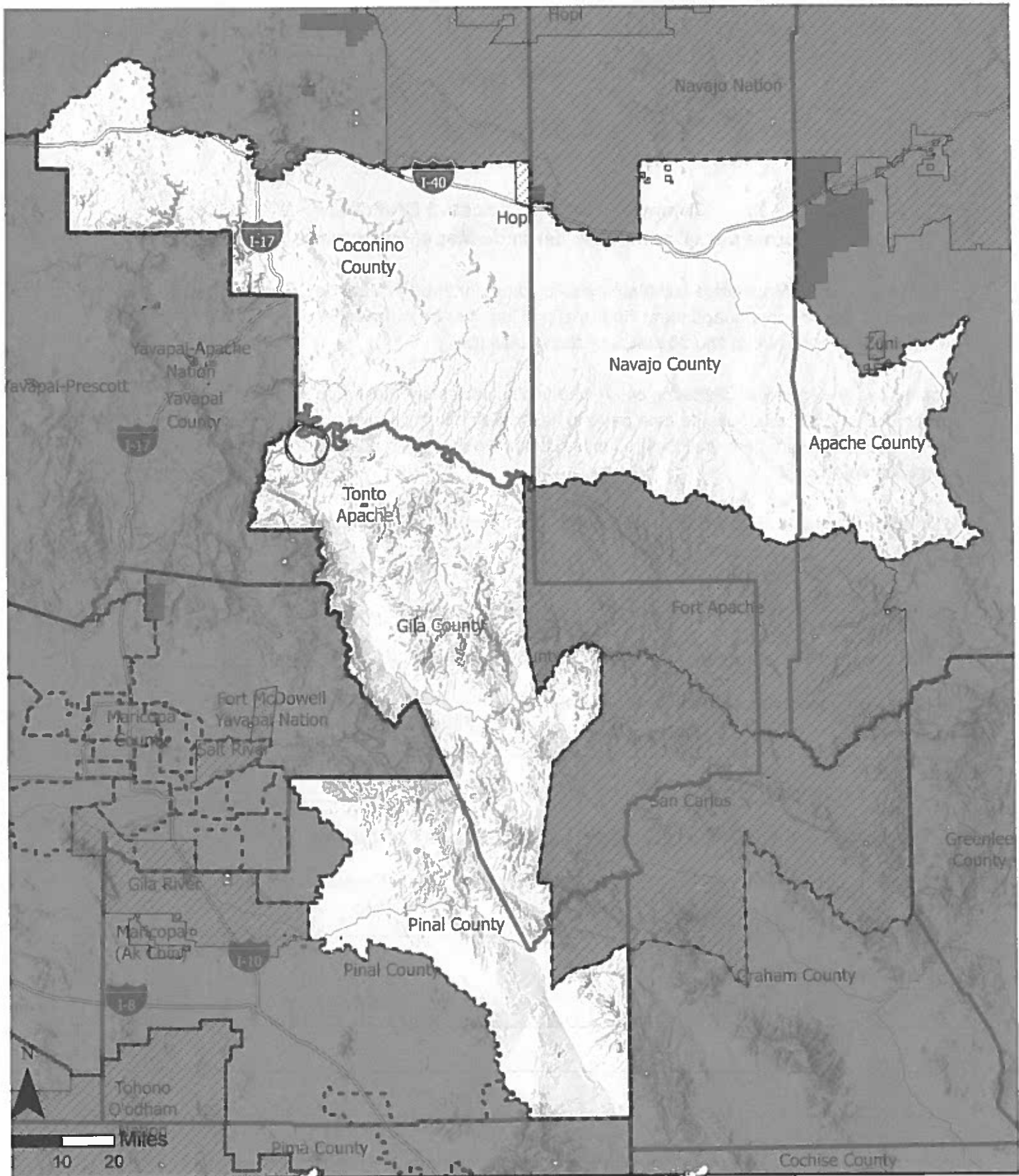
---

---

---

---

(over / siguiente)



## AZ Approved Draft Map Legislative District: 7

This plan was officially adopted on October 28, 2021 as the official Legislative Draft Map. <https://redistricting-irc-az.hub.arcgis.com/pages/draft-maps>

-  Approved Draft Map Legislative District
-  Arizona Counties
-  Arizona Tribal Reservations

**ARIZONA**  
INDEPENDENT REDISTRICTING COMMISSION



# ARIZONA

INDEPENDENT REDISTRICTING COMMISSION

## Comment Form for Adopted Draft Map / Forma para Comentario cerca de Mapa Preliminar Adoptado

The Adopted Draft Maps are available for public comment through Saturday, December 4, 2021. After this period, the Arizona Independent Redistricting Commission will meet to finalize the boundaries for Arizona's 9 congressional and 30 state legislative districts.

Los mapas preliminares adoptados están disponibles para comentarios públicos hasta el sábado 4 de diciembre de 2021. Después de este periodo, la Comisión Independiente de Redistribución de Distritos de Arizona se reunirá para finalizar los límites de los 9 del Congreso y los 30 distritos legislativos estatales de Arizona.

1. If relevant, please circle the area on the map corresponding to your comments.

Si es relevante, marque con un círculo el área en el mapa correspondiente a sus comentarios.

2. District number for Congressional (CD) or legislative (LD) map /

Número de distrito para Mapa del Congreso (CD) o legislativo (LD) 7

3. Your name / Su nombre (optional / opcional):

TOM LEONARD

4. Community of residence / comunidad de residencia: PINE

5. Are you with an organization? ¿Estás con una organización? Yes/Si -  No

a. Are you a paid representative? ¿Eres un representante pagado? Yes/Si  No

b. Name of organization / Nombre de la organización: N/A

Comments / Comentarios:

I support this map. Do not add Flagstaff to this district.

---

---

---

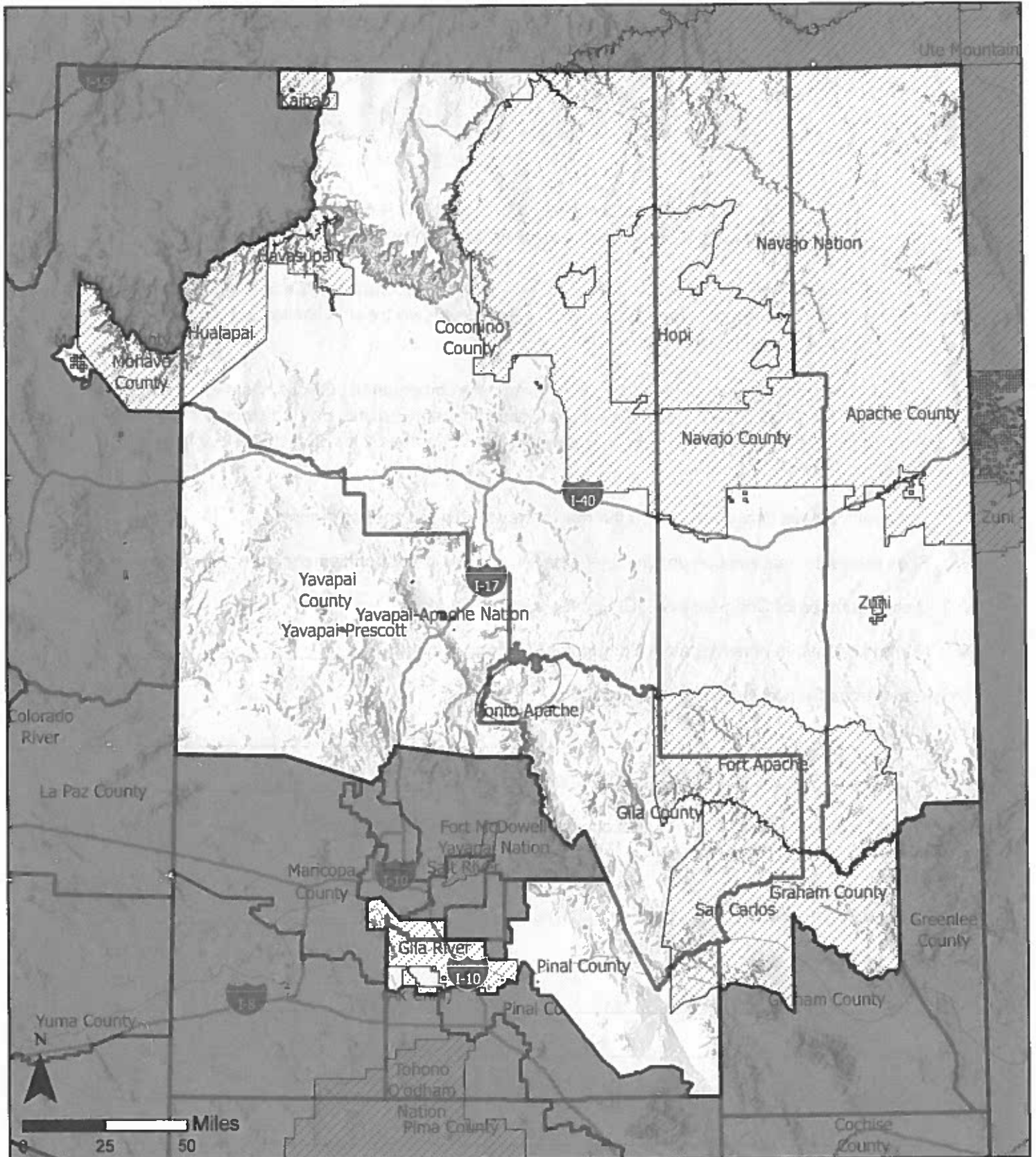
---

---

---

(over / siguiente)





## AZ Approved Draft Map Congressional District: 2

This plan was officially adopted on October 28, 2021 as the official Congressional Draft Map. For more information on the methodology used to create these boundaries, please visit: <https://redistricting-irc-az.hub.arcgis.com/pages/draft-maps>

**ARIZONA**  
INDEPENDENT REDISTRICTING COMMISSION

-  Approved Draft Map Congressional Districts
-  Arizona Tribal Reservations
-  Arizona Counties





# ARIZONA

INDEPENDENT REDISTRICTING COMMISSION

## Comment Form for Adopted Draft Map / Forma para Comentario cerca de Mapa Preliminar Adoptado

The Adopted Draft Maps are available for public comment through Saturday, December 4, 2021. After this period, the Arizona Independent Redistricting Commission will meet to finalize the boundaries for Arizona's 9 congressional and 30 state legislative districts.

Los mapas preliminares adoptados están disponibles para comentarios públicos hasta el sábado 4 de diciembre de 2021. Después de este periodo, la Comisión Independiente de Redistribución de Distritos de Arizona se reunirá para finalizar los límites de los 9 del Congreso y los 30 distritos legislativos estatales de Arizona.

1. If relevant, please circle the area on the map corresponding to your comments.

Si es relevante, marque con un círculo el área en el mapa correspondiente a sus comentarios.

2. District number for Congressional (CD) or legislative (LD) map / 2

Número de distrito para Mapa del Congreso (CD) o legislativo (LD) \_\_\_\_\_

3. Your name / Su nombre (optional / opcional):

CAROLINE LEONARD

4. Community of residence / comunidad de residencia: PINE AZ

5. Are you with an organization? ¿Estás con una organización? Yes/Si  No

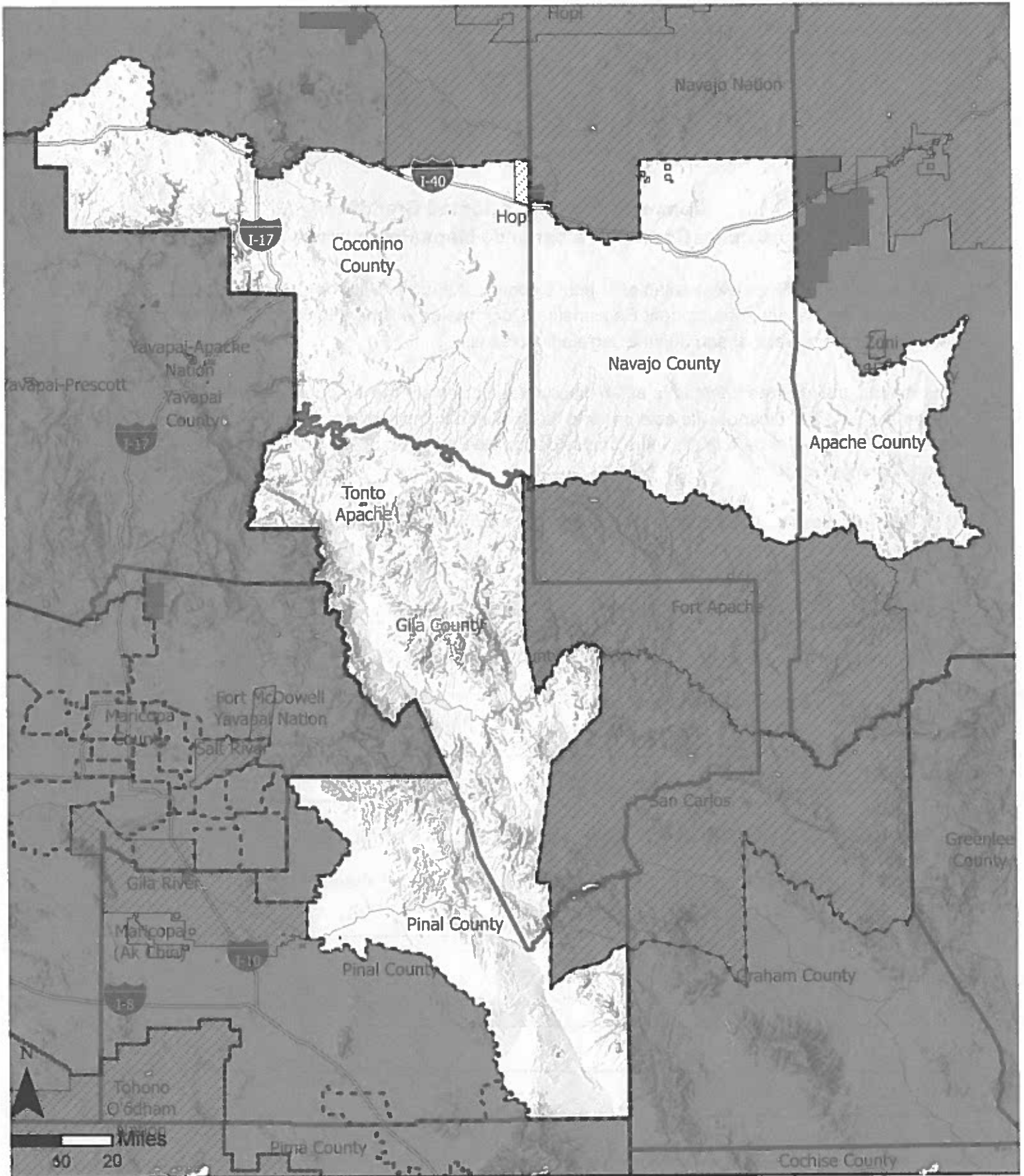
a. Are you a paid representative? ¿Eres un representante pagado? Yes/Si  No

b. Name of organization / Nombre de la organización: \_\_\_\_\_

Comments / Comentarios:


The Pine + Gila River Communities are City  
We are Rural - The needs are totally different  
the city and AZ have different needs

(over / siguiente)

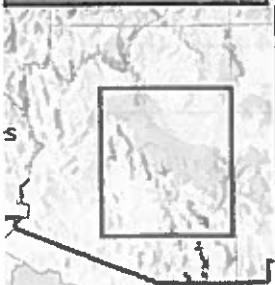


## AZ Approved Draft Map Legislative District: 7

This plan was officially adopted on October 28, 2021 as the official Legislative Draft Map. <https://redistricting-irc-az.hub.arcgis.com/pages/draft-maps>

-  Approved Draft Map Legislative District
-  Arizona Counties
-  Arizona Tribal Reservations

**ARIZONA**  
INDEPENDENT REDISTRICTING COMMISSION



# ARIZONA

INDEPENDENT REDISTRICTING COMMISSION

## Comment Form for Adopted Draft Map / Forma para Comentario cerca de Mapa Preliminar Adoptado

The Adopted Draft Maps are available for public comment through Saturday, December 4, 2021. After this period, the Arizona Independent Redistricting Commission will meet to finalize the boundaries for Arizona's 9 congressional and 30 state legislative districts.

Los mapas preliminares adoptados están disponibles para comentarios públicos hasta el sábado 4 de diciembre de 2021. Después de este período, la Comisión Independiente de Redistribución de Distritos de Arizona se reunirá para finalizar los límites de los 9 del Congreso y los 30 distritos legislativos estatales de Arizona.

1. If relevant, please circle the area on the map corresponding to your comments.

Si es relevante, marque con un círculo el área en el mapa correspondiente a sus comentarios.

2. District number for Congressional (CD) or legislative (LD) map / 7

Número de distrito para Mapa del Congreso (CD) o legislativo (LD) \_\_\_\_\_

3. Your name / Su nombre (optional / opcional):

CHARIZINE LEONARD

4. Community of residence / comunidad de residencia: PINE

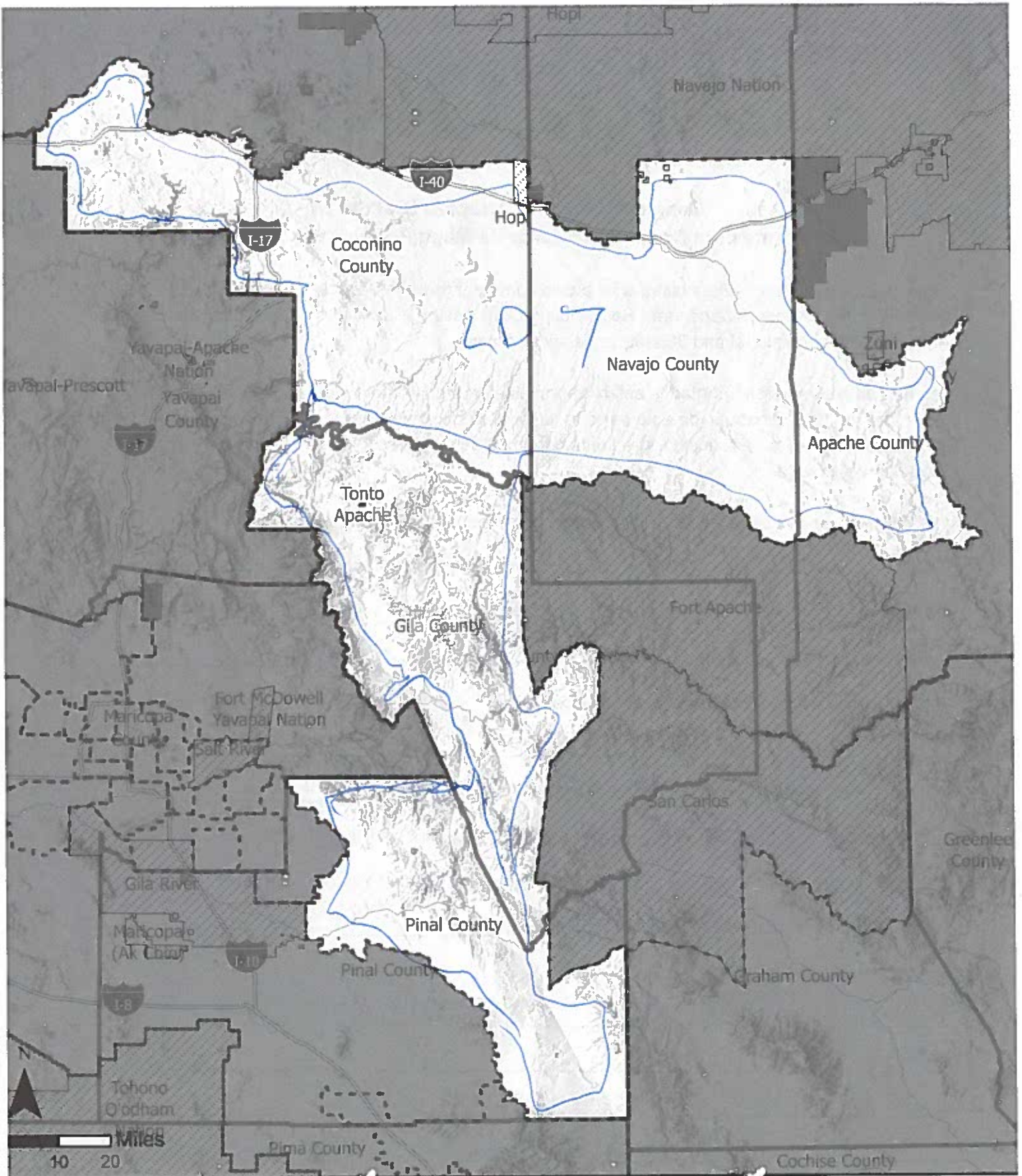
5. Are you with an organization? ¿Estás con una organización? Yes/Si - No

a. Are you a paid representative? ¿Eres un representante pagado? Yes/Si - No

b. Name of organization / Nombre de la organización: \_\_\_\_\_




Comments / Comentarios:  
Please do not add changes to an existing District





## AZ Approved Draft Map Legislative District: 7

This plan was officially adopted on October 28, 2021 as the official Legislative Draft Map. <https://redistricting-irc-az.hub.arcgis.com/pages/draft-maps>

-  Approved Draft Map Legislative District
-  Arizona Counties
-  Arizona Tribal Reservations

**ARIZONA**  
INDEPENDENT REDISTRICTING COMMISSION



# ARIZONA

INDEPENDENT REDISTRICTING COMMISSION

## Comment Form for Adopted Draft Map / Forma para Comentario cerca de Mapa Preliminar Adoptado

The Adopted Draft Maps are available for public comment through Saturday, December 4, 2021. After this period, the Arizona Independent Redistricting Commission will meet to finalize the boundaries for Arizona's 9 congressional and 30 state legislative districts.

Los mapas preliminares adoptados están disponibles para comentarios públicos hasta el sábado 4 de diciembre de 2021. Después de este periodo, la Comisión Independiente de Redistribución de Distritos de Arizona se reunirá para finalizar los límites de los 9 del Congreso y los 30 distritos legislativos estatales de Arizona.

1. If relevant, please circle the area on the map corresponding to your comments.

Si es relevante, marque con un círculo el área en el mapa correspondiente a sus comentarios.

2. District number for Congressional (CD) or legislative (LD) map / LD-7

Número de distrito para Mapa del Congreso (CD) o legislativo (LD) \_\_\_\_\_

3. Your name / Su nombre (optional / opcional):

TIM DEEGAN

4. Community of residence / comunidad de residencia: STAR VALLEY

5. Are you with an organization? ¿Estás con una organización? Yes/Si - No NO

a. Are you a paid representative? ¿Eres un representante pagado? Yes/Si - No NO

b. Name of organization / Nombre de la organización: \_\_\_\_\_

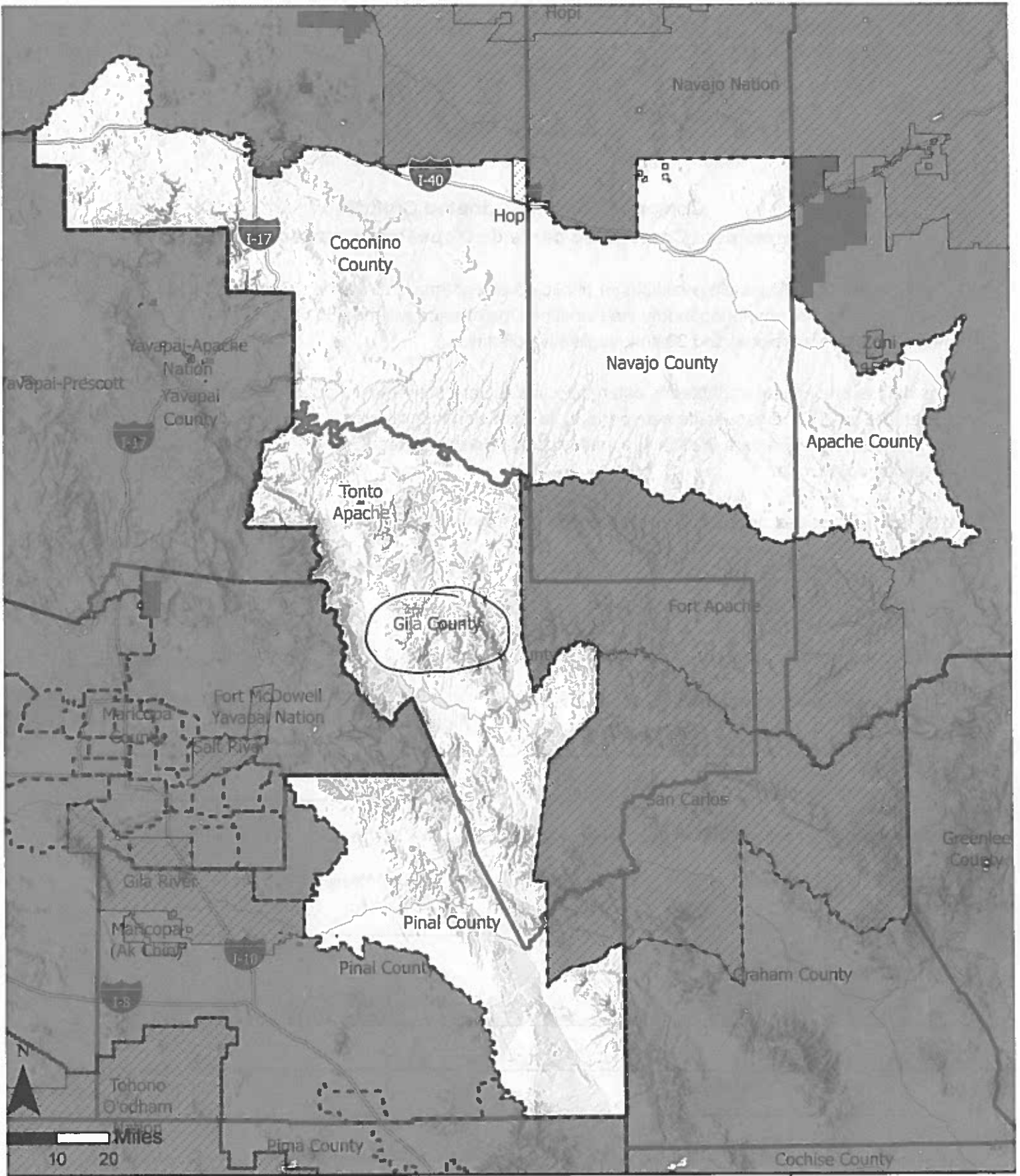
Comments / Comentarios:

- I SUPPORT THE COMMISSIONS LATEST MAP FOR LD-7, THE  
GILA COUNTY AREA
- I DO NOT WANT FLAGSTAFF IN OUR DISTRICT
- I DO NOT SUPPORT PUSHING DISTRICT 7 ONTO THE  
RESERVATION
- I CANNOT SUPPORT ANY OTHER "ALTERNATIVE" MAP MODEL.

(over / siguiente)




*Tim Deegan*



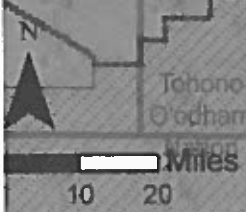


## AZ Approved Draft Map Legislative District: 7

This plan was officially adopted on October 28, 2021 as the official Legislative Draft Map. <https://redistricting-irc-az.hub.arcgis.com/pages/draft-maps>

-  Approved Draft Map Legislative District
-  Arizona Counties
-  Arizona Tribal Reservations

**ARIZONA**  
INDEPENDENT REDISTRICTING COMMISSION



# ARIZONA

INDEPENDENT REDISTRICTING COMMISSION

## Comment Form for Adopted Draft Map / Forma para Comentario cerca de Mapa Preliminar Adoptado

The Adopted Draft Maps are available for public comment through Saturday, December 4, 2021. After this period, the Arizona Independent Redistricting Commission will meet to finalize the boundaries for Arizona's 9 congressional and 30 state legislative districts.

Los mapas preliminares adoptados están disponibles para comentarios públicos hasta el sábado 4 de diciembre de 2021. Después de este período, la Comisión Independiente de Redistribución de Distritos de Arizona se reunirá para finalizar los límites de los 9 del Congreso y los 30 distritos legislativos estatales de Arizona.

1. If relevant, please circle the area on the map corresponding to your comments.

Si es relevante, marque con un círculo el área en el mapa correspondiente a sus comentarios.

2. District number for Congressional (CD) or legislative (LD) map /

Número de distrito para Mapa del Congreso (CD) o legislativo (LD)

currently: Legislative #6  
in: Congressional #4

3. Your name / Su nombre (optional / opcional):

Theresa Branson

4. Community of residence / comunidad de residencia: Pine

5. Are you with an organization? ¿Estás con una organización? Yes/Si -  No

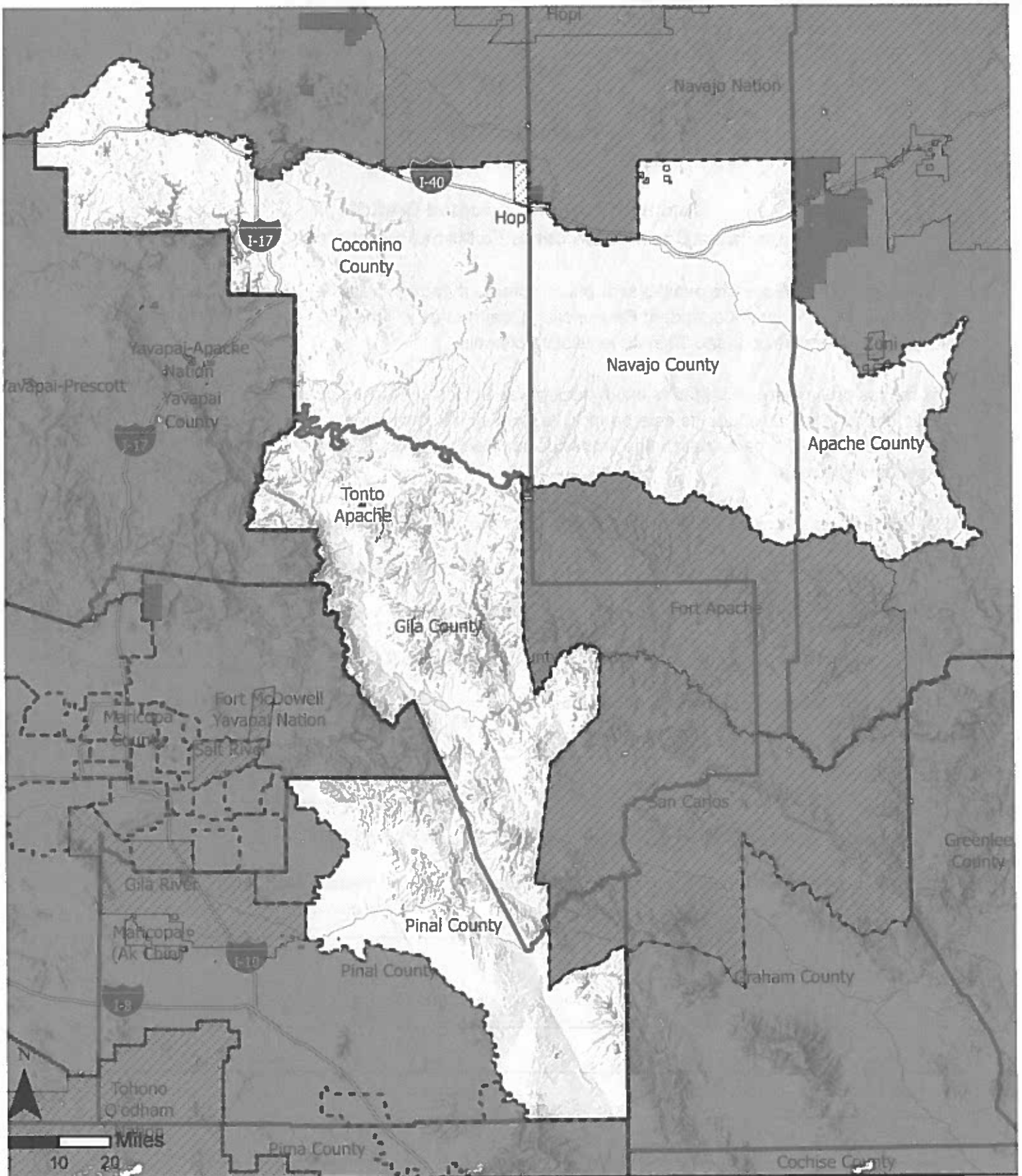
a. Are you a paid representative? ¿Eres un representante pagado? Yes/Si -  No

b. Name of organization / Nombre de la organización: \_\_\_\_\_

Comments / Comentarios:

I would like to see the ~~the~~ rural districts stay together.  
Such as the 10.2 map and the LD 7.

I do not support Flagstaff in our district



## AZ Approved Draft Map Legislative District: 7

This plan was officially adopted on October 28, 2021 as the official Legislative Draft Map. <https://redistricting-irc-az.hub.arcgis.com/pages/draft-maps>

- Approved Draft Map Legislative District
- Arizona Counties
- Arizona Tribal Reservations

**ARIZONA**  
INDEPENDENT REDISTRICTING COMMISSION

# ARIZONA

INDEPENDENT REDISTRICTING COMMISSION

## Comment Form for Adopted Draft Map / Forma para Comentario cerca de Mapa Preliminar Adoptado

The Adopted Draft Maps are available for public comment through Saturday, December 4, 2021. After this period, the Arizona Independent Redistricting Commission will meet to finalize the boundaries for Arizona's 9 congressional and 30 state legislative districts.

Los mapas preliminares adoptados están disponibles para comentarios públicos hasta el sábado 4 de diciembre de 2021. Después de este período, la Comisión Independiente de Redistribución de Distritos de Arizona se reunirá para finalizar los límites de los 9 del Congreso y los 30 distritos legislativos estatales de Arizona.

1. If relevant, please circle the area on the map corresponding to your comments.

Si es relevante, marque con un círculo el área en el mapa correspondiente a sus comentarios.

2. District number for Congressional (CD) or legislative (LD) map /

Número de distrito para Mapa del Congreso (CD) o legislativo (LD) LD7

3. Your name / Su nombre (optional / opcional):

Rebecca Carr

4. Community of residence / comunidad de residencia: Star Valley

5. Are you with an organization? ¿Estás con una organización? Yes/Si -  No

a. Are you a paid representative? ¿Eres un representante pagado? Yes/Si -  No

b. Name of organization / Nombre de la organización: \_\_\_\_\_

Comments / Comentarios:

I support the Commission's current map.

I don't support pushing DIST 7 in with the reservation.

We have a balanced mapping proposal and I support your latest mapping proposal

(over / siguiente)