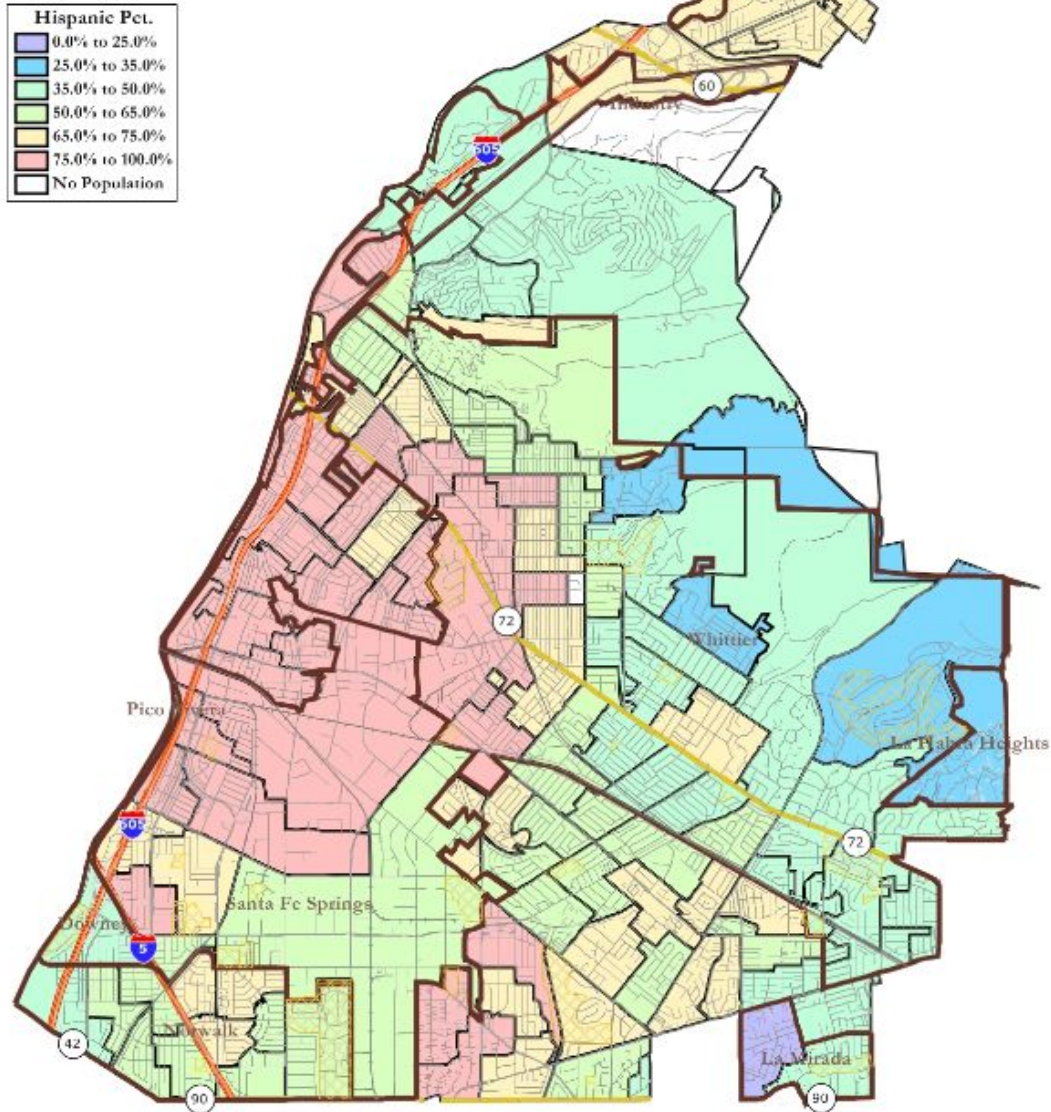




Arizona IRC Mapping Consultants Services

Data Analytics | Community Engagement | Transparency

Hispanic Percent of Citizen Voting Age Population
Census ACS 2006-2010 data
Tabulated by 2010 General Election Precinct



AGENDA

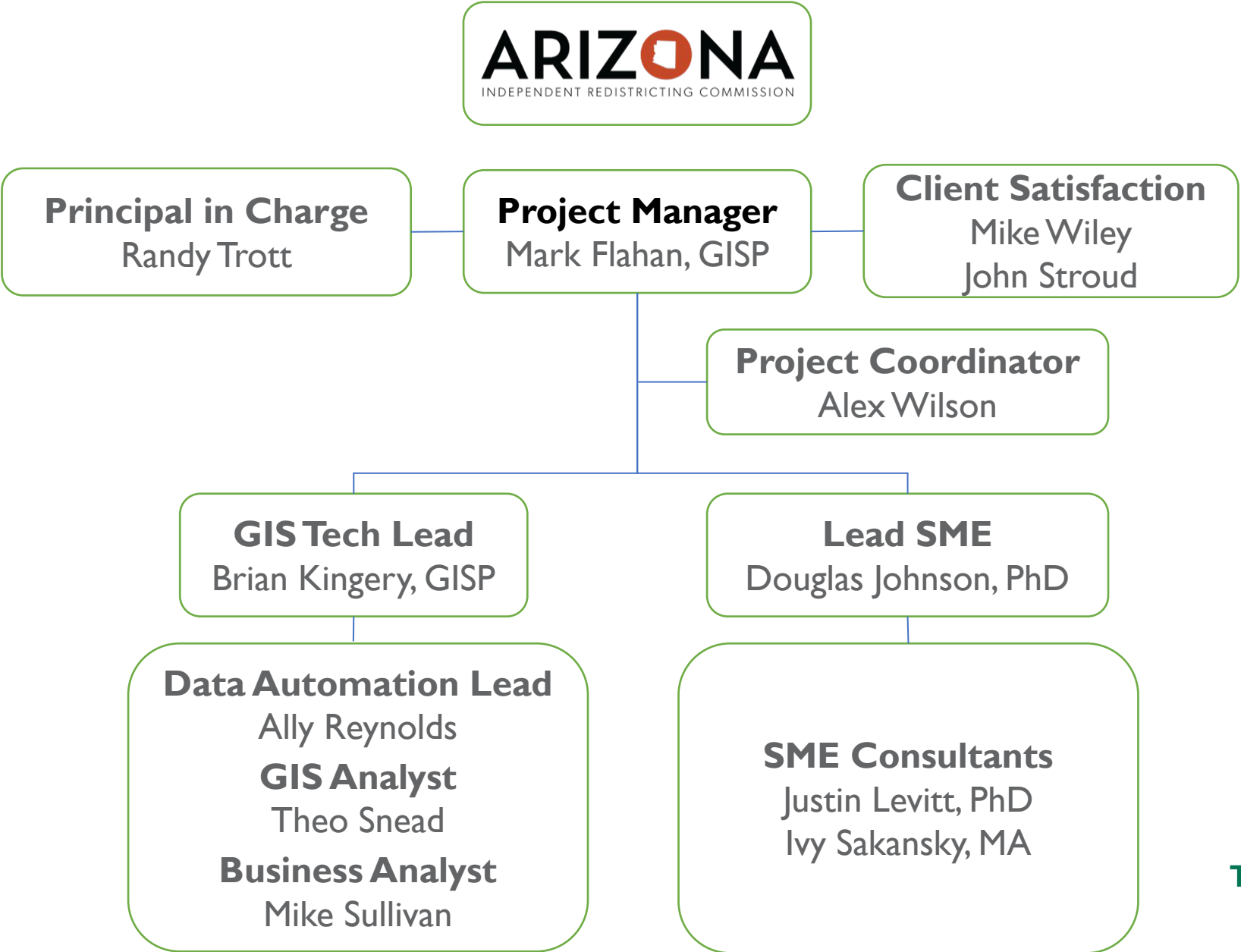
Project Overview

Schedule

Software

Q&A – Discussion!

Project Organization



Project Management Plan

Well documented project using a Project Plan and sub-plans

- Public Engagement
- Data Management
- Map Cartography
- System Management Plan
- Project Communications



PROPOSED from RFP- Project Schedule

Project Closeout

Jan 17

Draft Plans

Nov 24

Send Data to SOS

Dec 23 2022

Project Start

May 20

Census Data

(Tentitive)
Aug 15

2021

Ma

Jun

Ju

Aug

Sep

Oc

Nov

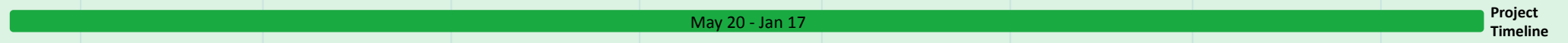
Dec

Jan

2022

Today

Project
Timeline



Project
Timeline

Kickoff

Project
Kick-off

PMP

Draft Project Management Plan

Redistricting
Solution
(Web Based)

Redistricting Solution Implementation
System of Public Engagement (ArcGIS Hub)
End User Systems Setup (1 laptop, plotter)

Listening Tour

Listening
Tour

Data

2020 Census P.L. 94-171 Redistricting Data
Initialize Grid Map

Public
Comments

30 Day Public Review
Cycle 1 Public Decision Meeting
Cycle 2 - Draft District Maps
Cycle 2 Public Decision Meeting
Cycle 3 Public Review -
Tentatively Adopted Plans

Project
Closeout

Project Archival Site



Public Engagement / Hearings

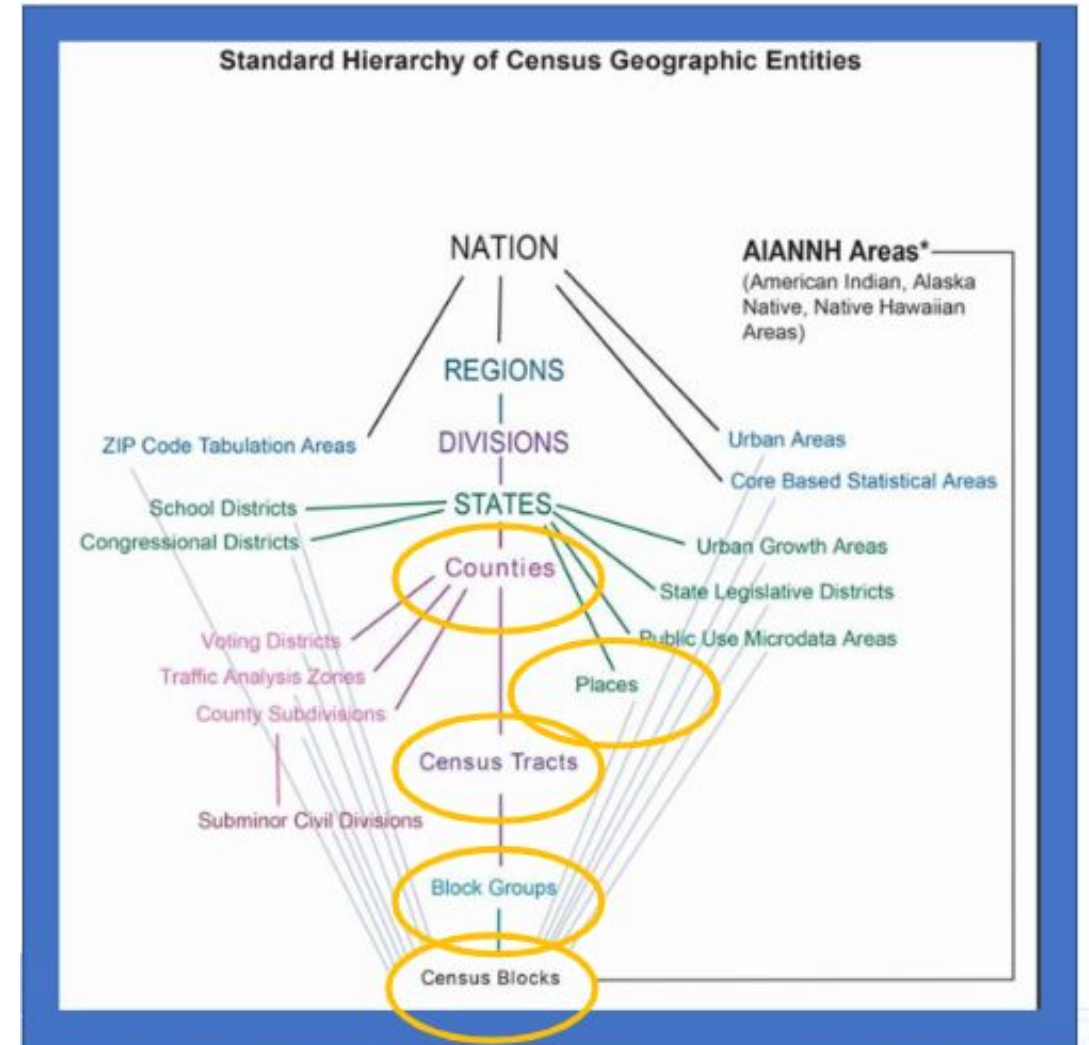
- Timmons Team will provide technological leadership (managing online sessions and showing online maps at in-person meetings)
- Attend public engagements in-person *
- Facilitate hearings along with Commissioners
- Code public maps and testimony
- Instruct how to use the mapping tools, as needed
- Provide hearing materials (e.g., foam board maps, handouts, etc.)
- Provide bilingual (Spanish) redistricting document templates and services/resources



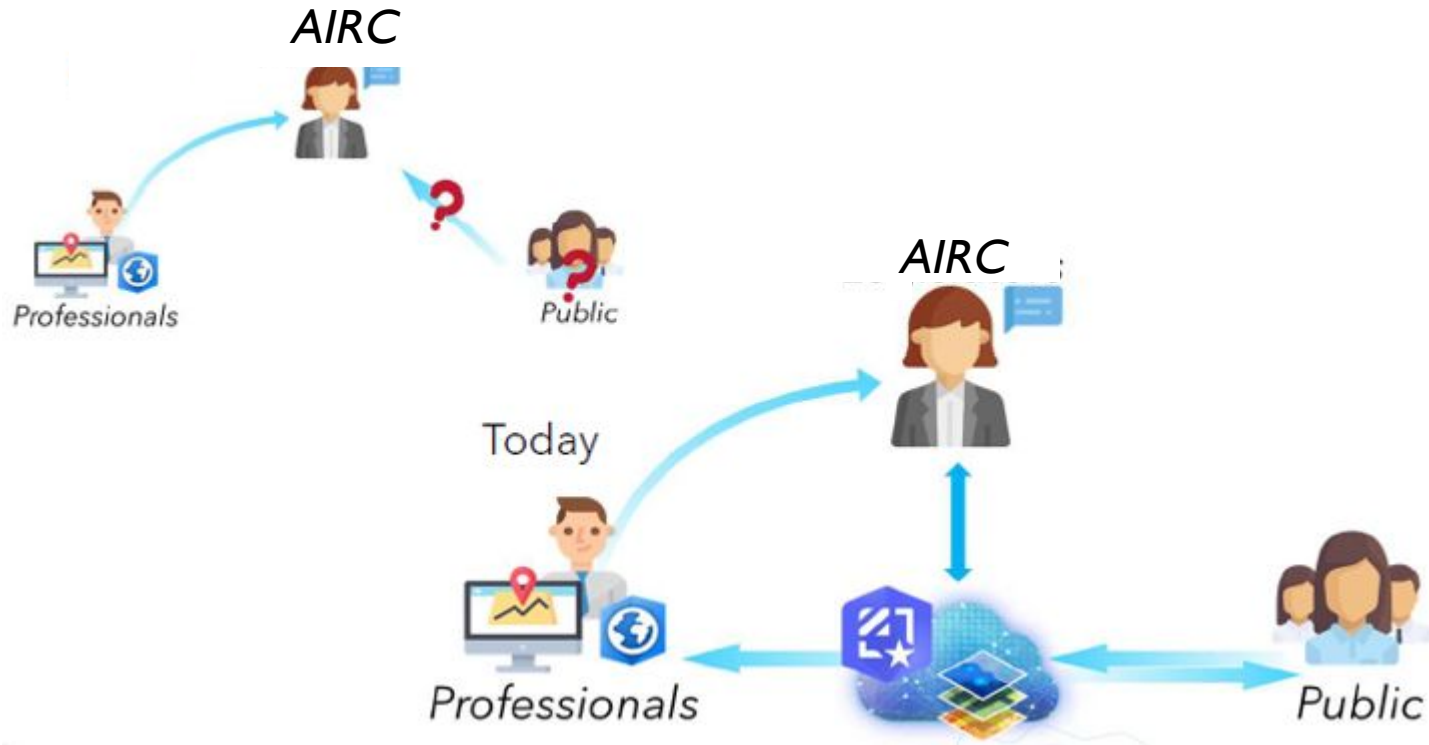
* Following appropriate COVID protocols

Project Data

- Decennial Census Public Law (P.L.) 94-171 Redistricting Data
- Our team has worked with Census data since the 2000 Census



Esri Redistricting Solution Overview



- Web-browser approach increases collaboration with AIRC and among citizens
- Facilitates collaboration, sharing and community building
- Easy-to-use interface elicits better engagement
- Centralized IT
- Cost-effective way to provide access to citizens

Redistricting Analytics

rdx1081.esriemcs.com/redistricting/index.html

ESRI - My Applicati... ArcGIS Enterprise ~ Time Management Esri Projects GeoData Services Microsoft Office Ho... Adv Program TCC

Redistricting Online 2.33

File Learn View Create Review Share Submit

Plan Histogram Plan Distribution District Compactness Tests Check Integrity Reports Clear All Close Plan Refresh Active Plan Compared Plan Differences

Integrity Tests

- ✓ Dual Assignment Check Details...
- ✓ Population Summary Check Details...
- ✓ District Count Check Details...
- ✗ Maximum Deviation Check Details...
- ✗ Null Assignment Check Zoom To...
- ✗ Connectivity Check Details...

District	TOTAL	TARGET_DEV	TOTALHISP	TOTALNH	WHITENH	BLACKNH	AIANNH	ASIANNH
Unassigned	21,274 (+405)	21,274	8,766 (+94)	12,508 (+311)	10,106 (+235)	877 (+22)	880	479
1	215,604 (+13,956)	2,537	23,985 (+845)	191,619 (+13,111)	181,264 (+12,687)	2,515 (+98)	3,056 (+115)	3,635 (+1,000)
2	199,798 (-14,293)	-13,269	118,424 (-3,189)	81,374 (-11,204)	68,267 (-10,355)	6,194 (-327)	3,045 (-184)	2,810 (-1,000)
3	201,971	-11,096	114,140	87,831	66,280	6,530	8,206	5,000

1 - 10 of 31 results

BA TerritoryTools - Seeds - ArcGIS Pro

Project Map Insert Analysis View Edit Imagery Share Appearance Territory Design Solution

Districts

Active Level Solve Add Variables Attribute Constraints Balance Variables Distance Parameters Barriers Options Load Data Add Level Create Feature Classes Manage Edit Territories Select Assign Unassign Delete Create Chart Export Solution Visualize Export

Contents

Search

Drawing Order

- ✓ SC_Districts_Seeds
 - ✓ Levels
 - ✓ Centers of Districts
 - Locked center
 - Dynamic center
 - ✓ Districts
 - 150 Cleveland Dr, Walhalla, South Carolina
 - 29641, Easley, South Carolina
 - 29673, Piedmont, South Carolina
 - 108 Lavinia Ave, Greenville, South Carolina
 - 1139 Bailey Mill Rd, Travelers Rest, South Carolina
 - 29610, Greenville, South Carolina
 - 527 Bryte St, Greenwood, South Carolina
 - 134 Oakland Ave, Spartanburg, South Carolina
 - 29606, Greenville, South Carolina
 - 29360, Laurens, South Carolina
 - 29374, Pauline, South Carolina
 - Gaffney Ave, Gaffney, South Carolina, 293
 - 507 Fagan Dr, Inman, South Carolina, 293
 - 29127, Prosperity, South Carolina
 - 215 Elmont Dr, Columbia, South Carolina
 - 29721, Lancaster, South Carolina
 - 7825 Camp Welfare Rd, Great Falls, South Carolina
 - 608 Motley Rd, Hopkins, South Carolina, 29
 - 29229, Columbia, South Carolina

1:4,529,221 77.0346341°W 32.5498634°N Selected Features: 0

Districts - Comparison... WHITE by Name

Properties Export Sort Filter: Selection Extent Attribute Table Switch Selection Rotate Chart

Comparison of POP2010, BLACK, HISPANIC, WHITE by Name

Values

600,000
400,000
200,000
0

District 1 District 2 District 3 District 4 District 5 District 6 District 7

Name

POP2010
BLACK
HISPANIC
WHITE

Discontiguous Districts

District	Number of Parts
District 7	23
District 8	11
District 14	3
District 23	24

Previous Part Next Part Refresh

Districts Proposed Assigned Comparison Attributes

Features Overview



Esri Redistricting

Esri Redistricting Online

Welcome to Esri Redistricting Online!

Esri Redistricting Online assists state and local governments, advocacy groups, and the general public in drawing legislative and congressional redistricting plans following the 2010 U.S. Census. The foundation of Esri software platform and pertinent dataset components. ArcGIS software provides comprehensive features and functionality for plan management, visualization, editing, and community collaboration.

Esri Redistricting Online can be used for geographic redistricting and territory design. Esri Redistricting Online is a web-based application that establishes an online community where users can collaborate and share technology, Esri data, and the latest available Census data to allow state and local government to prototype multiple redistricting scenarios before finalizing new boundaries.

Esri Redistricting Online provides online access to data content used by the community, including Census and PL 94-171 data. It includes tools to promote an increased collaboration between government and citizen can design optimal districts.

If you are new to the Esri Redistricting Online, start with the [Quick Tour](#), [Creating Plan](#), or read the [Frequently Asked Questions](#). Please refer to the help icon in the top right-hand corner of the page for assistance.

How to use this tool:

District	Color	Hide	Lock	TOTAL	TARGET_DEV	TOTALHISP	TOTALNH	WHITENH	BLACKNH	AIANNH	ASIANNH
Unassigned		<input type="checkbox"/>	<input type="checkbox"/>	20,869	20,869	8,672	12,197	9,871	855	880	434
District 1		<input type="checkbox"/>	<input type="checkbox"/>	215,604	2,537	23,985	191,619	181,264	2,515	3,056	3,635
District 2		<input type="checkbox"/>	<input type="checkbox"/>	199,798	-13,269	118,424	81,374	68,267	6,194	3,045	2,810
District 3		<input type="checkbox"/>	<input type="checkbox"/>	201,971	-11,096	114,140	87,831	66,280	6,530	8,206	5,538
District 4		<input type="checkbox"/>	<input type="checkbox"/>	201,795	-11,272	120,385	81,410	59,242	6,614	11,889	2,555

Esri Redistricting Online

Welcome to Esri Redistricting Online!

Esri Redistricting Online assists state and local governments, advocacy groups, and the general public in drawing legislative and congressional redistricting plans following the 2010 U.S. Census. The foundation of Esri software platform and pertinent dataset components. ArcGIS software provides comprehensive features and functionality for plan management, visualization, editing, and community collaboration.

Esri Redistricting Online can be used for geographic redistricting and territory design. Esri Redistricting Online is a web-based application that establishes an online community where users can collaborate and share technology, Esri data, and the latest available Census data to allow state and local government to prototype multiple redistricting scenarios before finalizing new boundaries.

Esri Redistricting Online provides online access to data content used by the community, including Census and PL 94-171 data. It includes tools to promote an increased collaboration between government and citizen can design optimal districts.

If you are new to the Esri Redistricting Online, start with the [Quick Tour](#), [Creating Plan](#), or read the [Frequently Asked Questions](#). Please refer to the help icon in the top right-hand corner of the page for assistance.

How to use this tool:

District	Color	Hide	Lock	TOTAL	TARGET_DEV	TOTALHISP	TOTALNH	WHITENH	BLACKNH	AIANNH	ASIANNH	HPINH	OTHERNH	MLTANNH
Unassigned		<input type="checkbox"/>	<input type="checkbox"/>	20,869	20,869	8,672	12,197	9,871	855	880	434	40	43	74
District 1		<input type="checkbox"/>	<input type="checkbox"/>	215,604	2,537	23,985	191,619	181,264	2,515	3,056	3,635	366	341	442
District 2		<input type="checkbox"/>	<input type="checkbox"/>	199,798	-13,269	118,424	81,374	68,267	6,194	3,045	2,810	258	271	529
District 3		<input type="checkbox"/>	<input type="checkbox"/>	201,971	-11,096	114,140	87,831	66,280	6,530	8,206	5,538	226	389	662
District 4		<input type="checkbox"/>	<input type="checkbox"/>	201,795	-11,272	120,385	81,410	59,242	6,614	11,889	2,555	270	293	547

ESRI - My Applicati... ArcGIS Enterprise -... Time Management Esri Projects GeoData Services Microsoft Office Ho... Adv Program

Redistricting Online 2.33

File Learn View **Create** Review Share Submit

Demographics Selection District: District 10 Display Level: County Selection Level: County Automatic Scale 1: 9.2M

Basemap Themes Add Content

Statistics Redistricting Tools Block/Block Group/Tract/County Map

San Francisco

Features Overview



Esri Redistricting

Redistricting Online 2.33

Plan: (Untitled) | Invites (0) | AaronHrenak | Sign Out

Integrity Tests

- ✓ Dual Assignment Check
- ✓ Population Summary Check
- ✓ District Count Check
- ✗ Maximum Deviation Check
- ✗ Null Assignment Check
- ✗ Connectivity Check

District	TOTAL	TARGET_DEV	TOTALHISP	TOTALNH	WHITENH	BLACKNH	AIANNH	ASIANNH	HPINH	OTHERNH	MLTANNH
Unassigned	21,274 (+405)	21,274	8,766 (+94)	12,508 (+311)	10,106 (+235)	877 (+22)	880	479 (+45)	40	43	83 (+9)
1	215,604 (+13,956)	2,537	23,985 (+845)	191,619 (+13,111)	181,264 (+12,687)	2,515 (+96)	3,056 (+115)	3,635 (+173)	366 (+7)	341 (+12)	442 (+21)
2	199,798 (+14,295)	-13,269	118,424 (+3,189)	81,374 (+11,204)	68,267 (+10,355)	6,194 (+327)	3,045 (+184)	2,810 (+256)	258 (+19)	271 (+13)	529 (+50)
3	201,971	-11,096	114,140	87,831	66,280	6,530	8,206	5,538	226	389	662

Redistricting Online 2.33

Plan: (Untitled) | Invites (0) | AaronHrenak | Sign Out

Integrity Tests

- ✓ Dual Assignment Check
- ✓ Population Summary Check
- ✓ District Count Check
- ✗ Maximum Deviation Check
- ✗ Null Assignment Check
- ✗ Connectivity Check

District	TOTAL	TARGET_DEV	TOTALHISP	TOTALNH	WHITENH	BLACKNH	AIANNH	ASIANNH	HPINH	OTHERNH	MLTANNH
Unassigned	21,274 (+405)	21,274	8,766 (+94)	12,508 (+311)	10,106 (+235)	877 (+22)	880	479 (+45)	40	43	83 (+9)
1	215,604 (+13,956)	2,537	23,985 (+845)	191,619 (+13,111)	181,264 (+12,687)	2,515 (+96)	3,056 (+115)	3,635 (+173)	366 (+7)	341 (+12)	442 (+21)
2	199,798 (+14,295)	-13,269	118,424 (+3,189)	81,374 (+11,204)	68,267 (+10,355)	6,194 (+327)	3,045 (+184)	2,810 (+256)	258 (+19)	271 (+13)	529 (+50)
3	201,971	-11,096	114,140	87,831	66,280	6,530	8,206	5,538	226	389	662

Access Log

Date	User	Description
2021-04-14 12:54	CBanerjee	Open Plan
2021-04-15 11:53	CBanerjee	Open Plan
2021-04-15 12:01	CBanerjee	Open Plan
2021-04-15 12:08	CBanerjee	Open Plan
2021-04-15 12:49	CBanerjee	Open Plan
2021-04-15 12:50	CBanerjee	Share Plan
2021-04-15 12:52	CBanerjee	Open Plan
2021-04-15 12:58	CBanerjee	Open Plan
2021-04-16 11:48	CBanerjee	Open Plan
2021-04-16 11:56	CBanerjee	Open Plan
2021-04-16 12:03	CBanerjee	Open Plan
2021-04-16 12:43	CBanerjee	Open Plan
2021-04-16 12:44	CBanerjee	Share Plan
2021-04-16 12:46	CBanerjee	Open Plan
2021-04-16 12:52	CBanerjee	Open Plan
2021-04-16 04:36	AaronHrenak	Open Plan



Citizen Access and Mapping System for AIRC

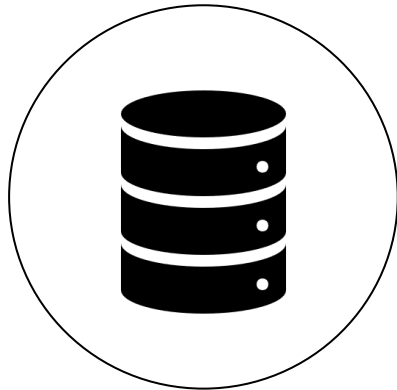


- Amazon hosted
- Works in any web browser
- 24/7 access for all
- AIRC is sole user of this system
- ArcGIS Hub and StoryMaps are available to enhance public engagement

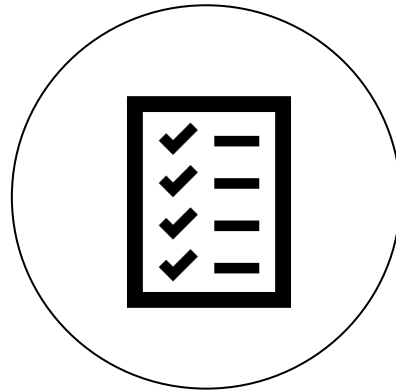
Features Overview



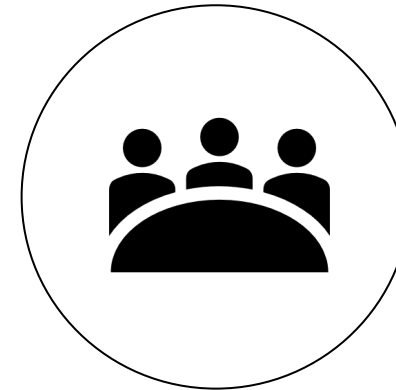
Esri Redistricting



Data
Sources



Plan
Management

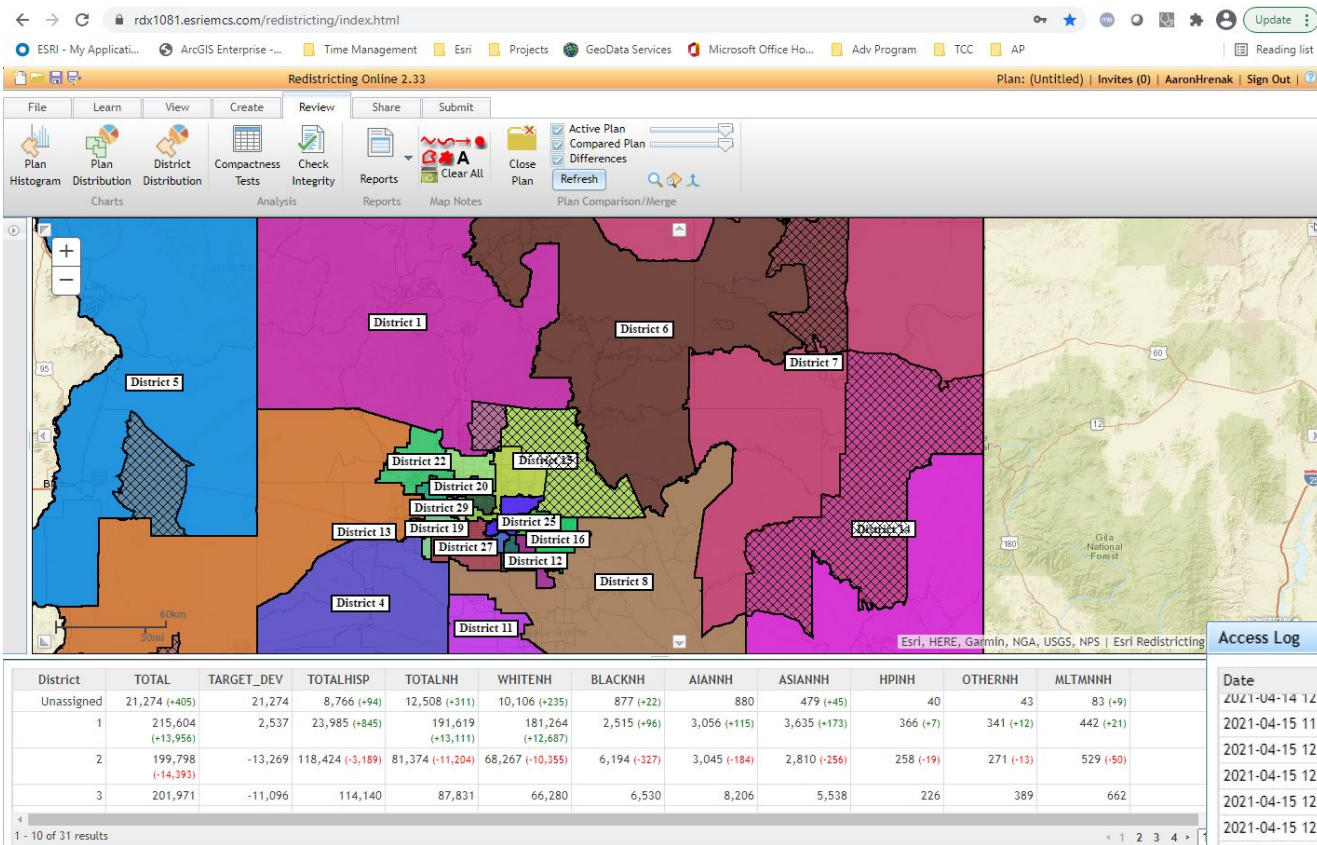


Collaboration

Audit

ESRI Software can overlay and compare maps.

Timmons Group will keep a log of the basis for each map change in the constitutional criteria.



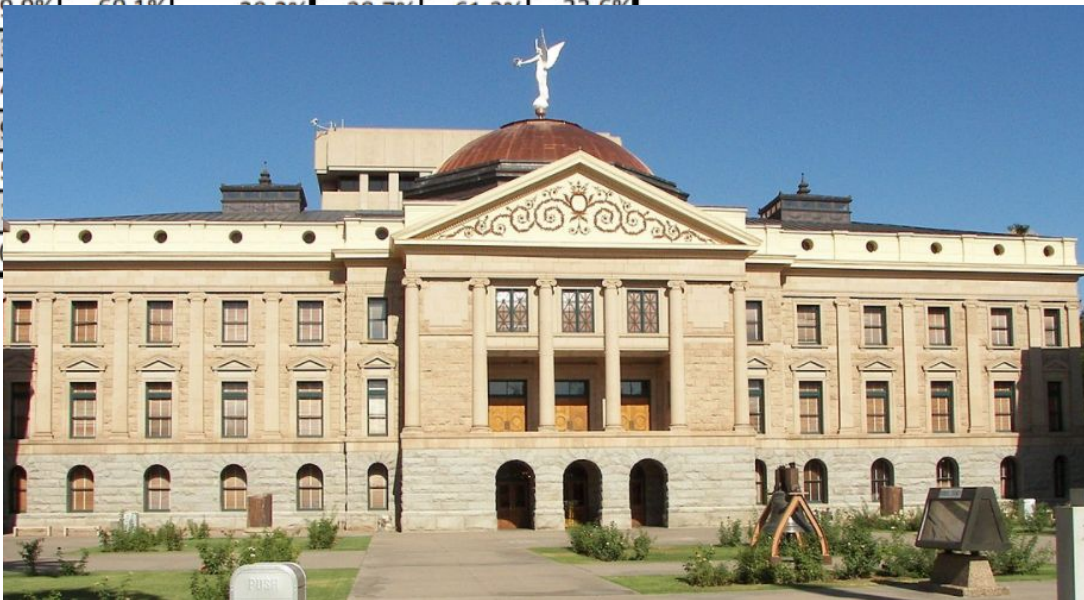
Date	User	Description
2021-04-14 12:54	CBanerjee	Open Plan
2021-04-15 11:53	CBanerjee	Open Plan
2021-04-15 12:01	CBanerjee	Open Plan
2021-04-15 12:08	CBanerjee	Open Plan
2021-04-15 12:49	CBanerjee	Open Plan
2021-04-15 12:50	CBanerjee	Share Plan
2021-04-15 12:52	CBanerjee	Open Plan
2021-04-15 12:58	CBanerjee	Open Plan
2021-04-16 11:48	CBanerjee	Open Plan
2021-04-16 11:56	CBanerjee	Open Plan
2021-04-16 12:03	CBanerjee	Open Plan
2021-04-16 12:43	CBanerjee	Open Plan
2021-04-16 12:44	CBanerjee	Share Plan
2021-04-16 12:46	CBanerjee	Open Plan
2021-04-16 12:52	CBanerjee	Open Plan
2021-04-16 04:36	AaronHrenak	Open Plan





Discussion

District	Competitiveness Index 6			Competitiveness Index 7		
	Ave. REP %	Ave. DEM %	Diff	Ave. REP %	Ave. DEM %	Diff
1	49.7%	50.3%	0.6%	48.4%	51.6%	3.2%
2	50.3%	49.7%	0.6%	50.3%	49.7%	0.6%
3	39.8%	60.1%	20.3%	39.7%	60.2%	20.5%
4	61.2%	38.8%	22.4%	61.2%	38.8%	22.4%
5	64.1%	35.9%	28.2%	64.1%	35.9%	28.2%
6	51.4%	48.6%	2.8%	51.4%	48.6%	2.8%
7	31.2%	68.8%	37.6%	31.2%	68.8%	37.6%
8	61.5%	38.5%	23.0%	61.5%	38.5%	23.0%
9	51.2%	48.8%	2.4%	51.2%	48.8%	2.4%



www.timmonsgis.com

