

Sheryl Eaton

Lakeside, AZ 85929

928-368-6226

Comments at the IRC meeting at Hon-Dah on November 30, 2021

I'm Sheryl Eaton. I live in Navajo County outside of Lakeside. We are here on the Sovereign Nation of the White Mountain Apaches where I lived and/or worked for 35 years.

Competitiveness and fairness of districts are the specific redistricting requirements the people of Arizona voted for in 2000.

The current CD1 is competitive. Candidates have to work hard to win it and have to listen to and represent all of their constituents to be re-elected. Voters of all parties work to get out the vote and Native American votes can make the difference.

The draft CD2 map is not competitive. Republicans win "test" elections 9 out of 9 times. That eliminates the power of the Native American vote. They would have 22% of the votes in the district but no chance of electing their candidates, and the elected representative could just ignore them. The representative would only have to cater to his or her base to get re-elected every time.

To give all people a chance to affect the outcome of an election, the margin between political parties should be quite small, maybe 3%. I support the Navajo Human Rights Commission's proposed map for CD2, CDF010, because it creates a competitive district.

As to Legislative Districts, my comment is similar: a bright blue district next to a bright red district discourages people from participating. Why try when you know you will lose...or when you know you will surely win? The outcome is predetermined by the boundaries of the districts. I favor the Coconino County Supervisors' proposed maps for the new LD6 and LD7.

For the last 150 to 500 years, Native Americans have fought literally and figuratively to preserve their lands, their languages, their cultures and their lives. They deserve to have a fighting chance to be able to help choose their preferred candidates in federal, state and local elections...and even win an election or two with Indigenous candidates.

I appreciate the hard work of the Commissioners and wish you well as you finalize competitive and fair maps.

ARIZONA

INDEPENDENT REDISTRICTING COMMISSION

Comment Form for Adopted Draft Map / Forma para Comentario cerca de Mapa Preliminar Adoptado

The Adopted Draft Maps are available for public comment through Saturday, December 4, 2021. After this period, the Arizona Independent Redistricting Commission will meet to finalize the boundaries for Arizona's 9 congressional and 30 state legislative districts.

Los mapas preliminares adoptados están disponibles para comentarios públicos hasta el sábado 4 de diciembre de 2021. Después de este período, la Comisión Independiente de Redistribución de Distritos de Arizona se reunirá para finalizar los límites de los 9 del Congreso y los 30 distritos legislativos estatales de Arizona.

1. If relevant, please circle the area on the map corresponding to your comments.

Si es relevante, marque con un círculo el área en el mapa correspondiente a sus comentarios.

2. District number for Congressional (CD) or legislative (LD) map /

7

Número de distrito para Mapa del Congreso (CD) o legislativo (LD)

7

3. Your name / Su nombre (optional / opcional):

Diane Talbott-Mosier

4. Community of residence / comunidad de residencia:

Show Low

5. Are you with an organization? ¿Estás con una organización? Yes/Si - No

a. Are you a paid representative? ¿Eres un representante pagado? Yes/Si - No

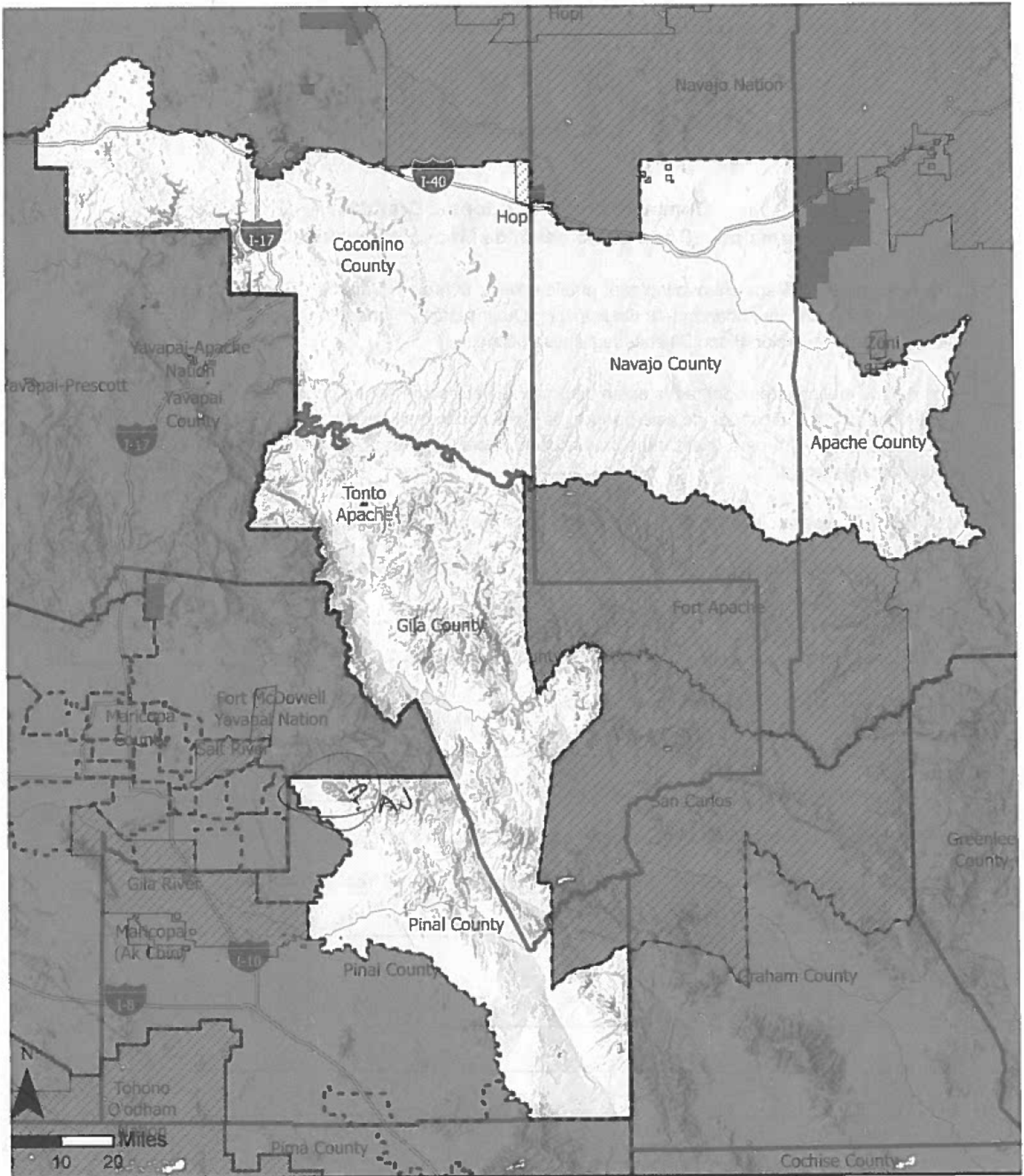
b. Name of organization / Nombre de la organización:

NE AZ Republican Women

Comments / Comentarios:

Rural communities with similar interests and common goals need to be in the same district. 5+ Rural counties in Eastern AZ need to be kept as a separate district - Solely rural and undivided!

(over / siguiente)



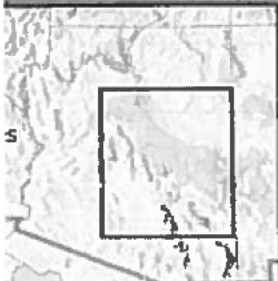
AZ Approved Draft Map Legislative District: 7

This plan was officially adopted on October 28, 2021 as the official Legislative Draft Map. <https://redistricting-irc-az.hub.arcgis.com/pages/draft-maps>

- Approved Draft Map Legislative District
- Arizona Counties
- Arizona Tribal Reservations

ARIZONA
INDEPENDENT REDISTRICTING COMMISSION

*Apache Jet,
in Pinal Co?
Florence?*



Good evening, I'm Patrick Day.

I live in an unincorporated area of Apache County near Concho. ~~120~~
~~18450, Concho, AZ, 85924)~~

I am speaking for myself and my family who own property in Apache County.

I am an independent-minded voter who believes that congressional districts should be competitive.

The current configuration of District ~~One~~ ^{11 one} makes it a competitive district that ~~meets or~~ ^{exceeds} the commission's standard for competitiveness, a maximum 7% point spread. ~~or less~~. Competitive districts encourage candidates to address the needs and concerns of all voters, not just the majority party.

The IRC's draft map of Congressional District 2 takes a highly competitive district and puts it solidly in the camp of one party as evidenced by the IRC test races. This anti-competitive imbalance is unnecessary to meet the requirements of the other 5 congressional criteria.

The congressional draft map submitted by the Navajo Nation maintains competition in congressional district 2 as well as meeting all other criteria.

I urge the commission to redraw the lines for CD2.

Thank you.

Eric Kramer, Prescott, Az

When we created the IRC 20 years ago, it was the Hope of Democracy.
Now we are getting the same old gerrymandering. An approximately equal number of non-competitive districts is not the same thing as competitive districts -- required by the Arizona Constitution.

Native Americans are told that they will be all right in the proposed CD2 because as a 22% minority they will have influence with the majority. Those assurances are not creditable when the district is likely to be controlled by actual white supremacists. This may seem impolite, but Gosar is a white supremacist who has been stripped of his committees for creating an image of himself killing a non-white woman for sport. He shouldn't be given Northern Arizona as a personal fief. We need the portions of Yavapai County beyond Mingus Mountain to be removed from congressional district Two to make it competitive.

The Legislative Districts in northeast Arizona are not competitive and violate the charter of the commission. Packing is as much a form of gerrymandering as splitting. The commission may expect brownie points for packing the ^{as pack} Native Americans into the new LD6, along with much of Flagstaff. This gives three Natives \$24,000-a-year jobs in Phoenix. But when they get there, they aren't even allowed in the room when the budget is discussed. The gerrymander packs northern Arizona's Democrats into a single district and leaves the 300,000 Native Americans without any hope of meaningful influence in state government.

It is the role of the Commission to provide competitive legislative districts, and this can easily be ^{done} by following the Coconino County Board of Supervisors plan. ^{plan}

Eric

ARIZONA

INDEPENDENT REDISTRICTING COMMISSION

Comment Form for Adopted Draft Map / Forma para Comentario cerca de Mapa Preliminar Adoptado

The Adopted Draft Maps are available for public comment through Saturday, December 4, 2021. After this period, the Arizona Independent Redistricting Commission will meet to finalize the boundaries for Arizona's 9 congressional and 30 state legislative districts.

Los mapas preliminares adoptados están disponibles para comentarios públicos hasta el sábado 4 de diciembre de 2021. Después de este período, la Comisión Independiente de Redistribución de Distritos de Arizona se reunirá para finalizar los límites de los 9 del Congreso y los 30 distritos legislativos estatales de Arizona.

1. If relevant, please circle the area on the map corresponding to your comments.

Si es relevante, marque con un círculo el área en el mapa correspondiente a sus comentarios.

2. District number for Congressional (CD) or legislative (LD) map /

Número de distrito para Mapa del Congreso (CD) o legislativo (LD) 6

3. Your name / Su nombre (optional / opcional):

Missie Fay

4. Community of residence / comunidad de residencia: Lakeside /

5. Are you with an organization? ¿Estás con una organización? Yes/Si No

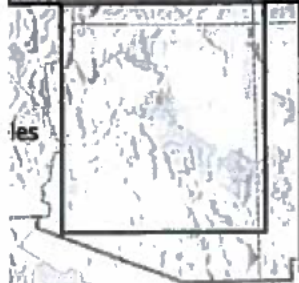
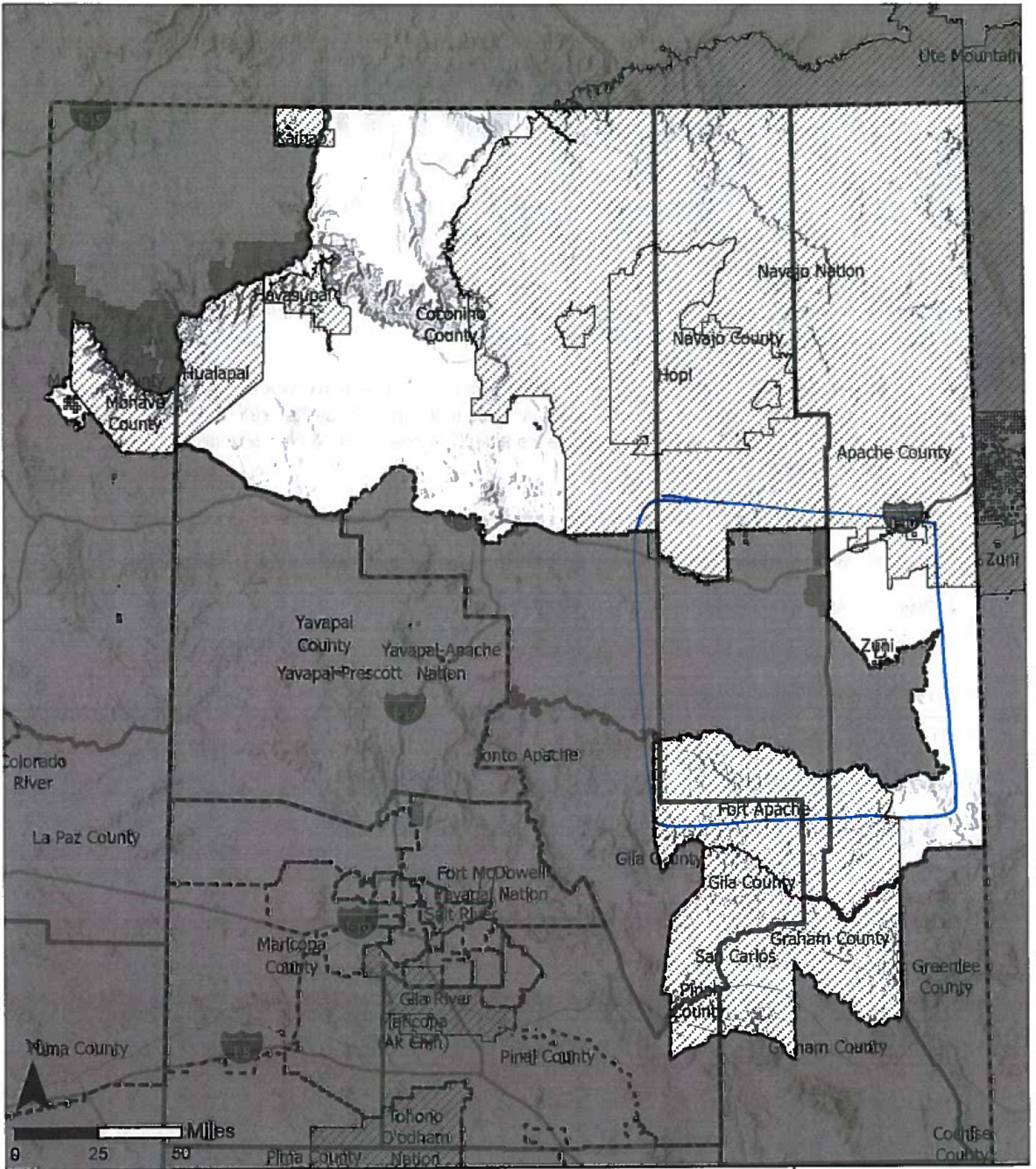
a. Are you a paid representative? ¿Eres un representante pagado? Yes/Si No

b. Name of organization / Nombre de la organización: _____

Comments / Comentarios:

Navajo & Apache Counties should be kept whole in WDG.
The communities of interest of the White Mountain Apache
& Navajo Nation extend to all of the border towns
in ~~dis~~ those counties. As a percentage of land mass
& population it only makes to sense keep these
counties together to protect the voting bloc

(over / siguiente)



AZ Approved Draft Map Legislative District: 6

This plan was officially adopted on October 28, 2021 as the official Legislative Draft Map. <https://redistricting-irc-az.hub.arcgis.com/pages/draft-maps>

- Approved Draft Map Legislative Districts
- Arizona Counties
- Arizona Tribal Reservations

ARIZONA
INDEPENDENT REDISTRICTING COMMISSION

ARIZONA

INDEPENDENT REDISTRICTING COMMISSION

Comment Form for Adopted Draft Map / Forma para Comentario cerca de Mapa Preliminar Adoptado

The Adopted Draft Maps are available for public comment through Saturday, December 4, 2021. After this period, the Arizona Independent Redistricting Commission will meet to finalize the boundaries for Arizona's 9 congressional and 30 state legislative districts.

Los mapas preliminares adoptados están disponibles para comentarios públicos hasta el sábado 4 de diciembre de 2021. Después de este período, la Comisión Independiente de Redistribución de Distritos de Arizona se reunirá para finalizar los límites de los 9 del Congreso y los 30 distritos legislativos estatales de Arizona.

1. If relevant, please circle the area on the map corresponding to your comments.

Si es relevante, marque con un círculo el área en el mapa correspondiente a sus comentarios.

2. District number for Congressional (CD) or legislative (LD) map /

Número de distrito para Mapa del Congreso (CD) o legislativo (LD)

LD 7

3. Your name / Su nombre (optional / opcional):

Eric Kramer

4. Community of residence / comunidad de residencia:

Pinetop

5. Are you with an organization? ¿Estás con una organización? Yes/Si - No

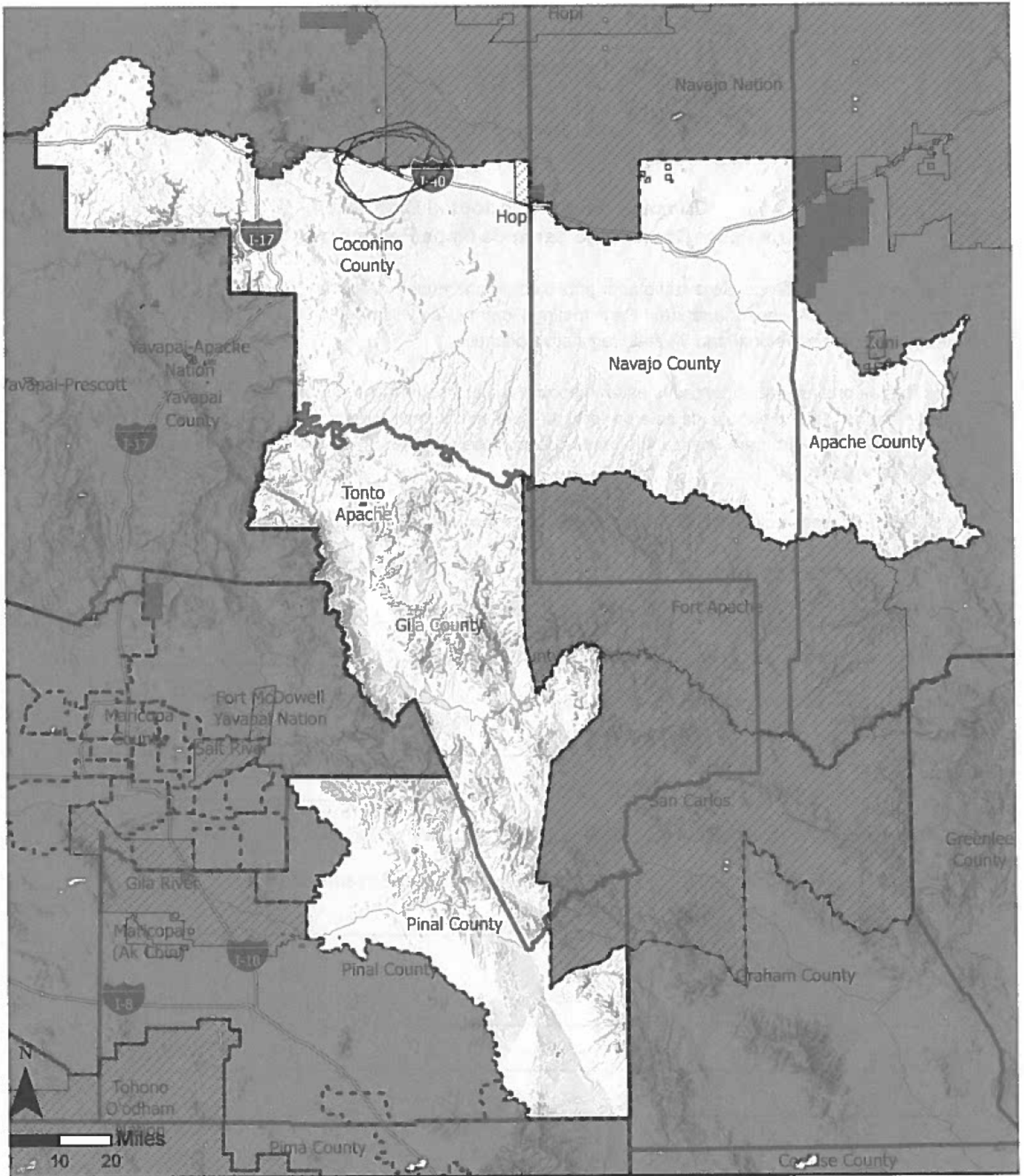
a. Are you a paid representative? ¿Eres un representante pagado? Yes/Si - No

b. Name of organization / Nombre de la organización: _____

Comments / Comentarios:




Creating a district for Sylvia Allen
violates the statutes setting up the
Commission. This gerrymander is designed to
create a Republican district. Creating equal
numbers of non-competitive districts is not the
same as creating competitive districts, as required.

(over / siguiente)



AZ Approved Draft Map Legislative District: 7

This plan was officially adopted on October 28, 2021 as the official Legislative Draft Map. <https://redistricting-irc-az.hub.arcgis.com/pages/draft-maps>

-  Approved Draft Map Legislative District
-  Arizona Counties
-  Arizona Tribal Reservations

ARIZONA
INDEPENDENT REDISTRICTING COMMISSION



ARIZONA

INDEPENDENT REDISTRICTING COMMISSION

Comment Form for Adopted Draft Map / Forma para Comentario cerca de Mapa Preliminar Adoptado

The Adopted Draft Maps are available for public comment through Saturday, December 4, 2021. After this period, the Arizona Independent Redistricting Commission will meet to finalize the boundaries for Arizona's 9 congressional and 30 state legislative districts.

Los mapas preliminares adoptados están disponibles para comentarios públicos hasta el sábado 4 de diciembre de 2021. Después de este período, la Comisión Independiente de Redistribución de Distritos de Arizona se reunirá para finalizar los límites de los 9 del Congreso y los 30 distritos legislativos estatales de Arizona.

1. If relevant, please circle the area on the map corresponding to your comments.

Si es relevante, marque con un círculo el área en el mapa correspondiente a sus comentarios.

2. District number for Congressional (CD) or legislative (LD) map /

Número de distrito para Mapa del Congreso (CD) o legislativo (LD) CD 2

3. Your name / Su nombre (optional / opcional):

Eric Kramer

4. Community of residence / comunidad de residencia: Pinetop, AZ

5. Are you with an organization? ¿Estás con una organización? Yes/Si No

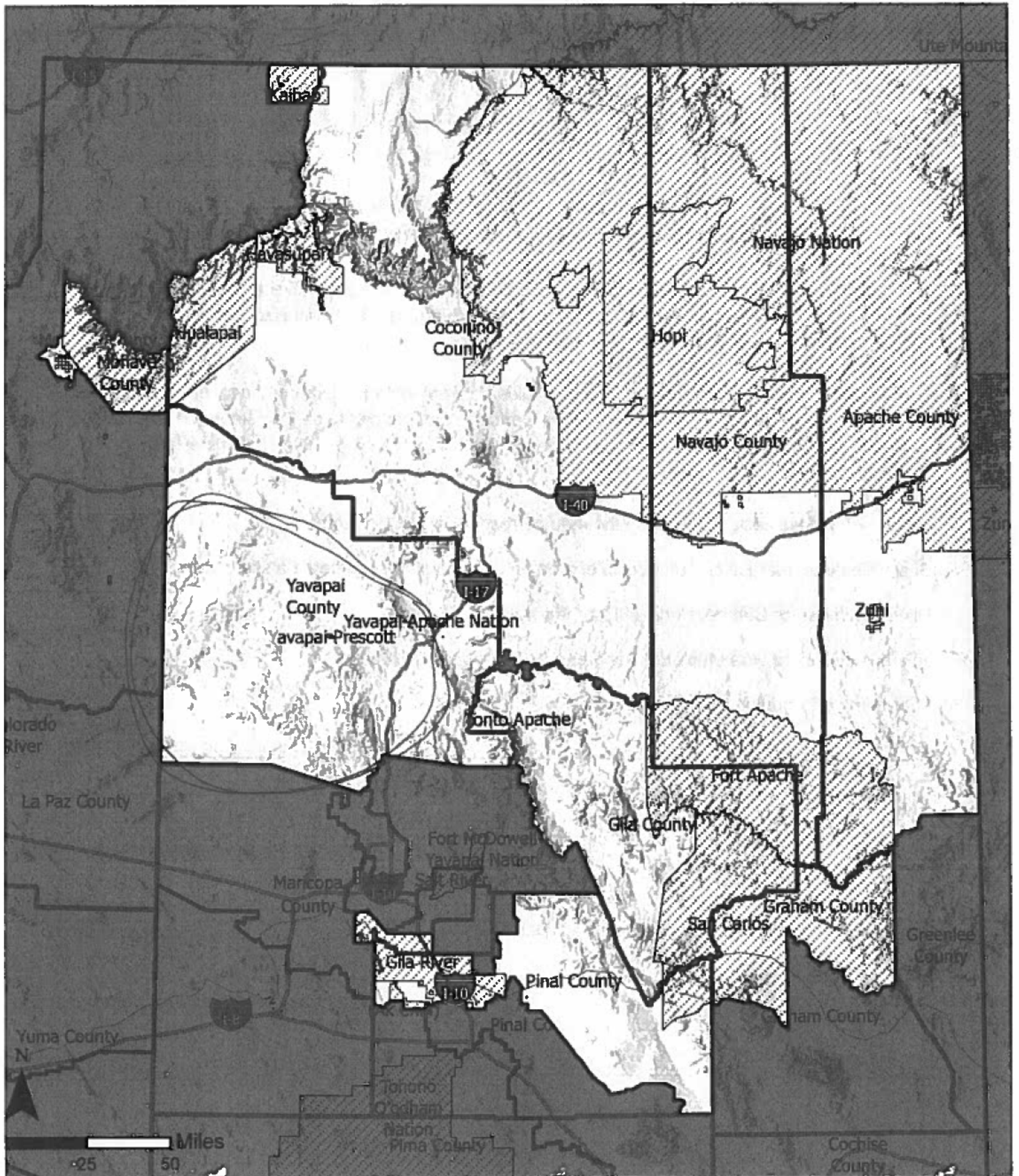
a. Are you a paid representative? ¿Eres un representante pagado? Yes/Si No

b. Name of organization / Nombre de la organización: _____




Comments / Comentarios:

CD2 is not competitive as required. The portion of Yavapai County beyond Mingo Mountain needs to be removed. Placing Arizona's Native Americans in a district designed for white supremacists is a tragedy.

(over / siguiente)

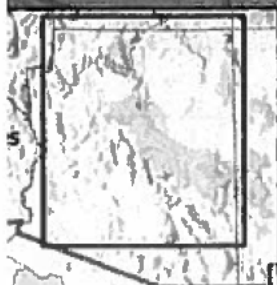


AZ Approved Draft Map Congressional District: 2

-  Approved Draft Map Congressional District
-  Arizona Tribal Reservations
-  Arizona Counties

This plan was officially adopted on October 28, 2021 as the official Congressional Draft Map. For more information on the methodology used to create these boundaries, please visit: <https://redistricting-irc-az.hub.arcgis.com/pages/draft-maps>

ARIZONA
INDEPENDENT REDISTRICTING COMMISSION



ARIZONA

INDEPENDENT REDISTRICTING COMMISSION

Comment Form for Adopted Draft Map / Forma para Comentario cerca de Mapa Preliminar Adoptado

The Adopted Draft Maps are available for public comment through Saturday, December 4, 2021. After this period, the Arizona Independent Redistricting Commission will meet to finalize the boundaries for Arizona's 9 congressional and 30 state legislative districts.

Los mapas preliminares adoptados están disponibles para comentarios públicos hasta el sábado 4 de diciembre de 2021. Después de este período, la Comisión Independiente de Redistribución de Distritos de Arizona se reunirá para finalizar los límites de los 9 del Congreso y los 30 distritos legislativos estatales de Arizona.

1. If relevant, please circle the area on the map corresponding to your comments.

Si es relevante, marque con un círculo el área en el mapa correspondiente a sus comentarios.

2. District number for Congressional (CD) or legislative (LD) map /

Número de distrito para Mapa del Congreso (CD) o legislativo (LD)

6-7

3. Your name / Su nombre (optional / opcional):

Eric Kramer

4. Community of residence / comunidad de residencia:

Pinetop, AZ

5. Are you with an organization? ¿Estás con una organización? Yes/Si No

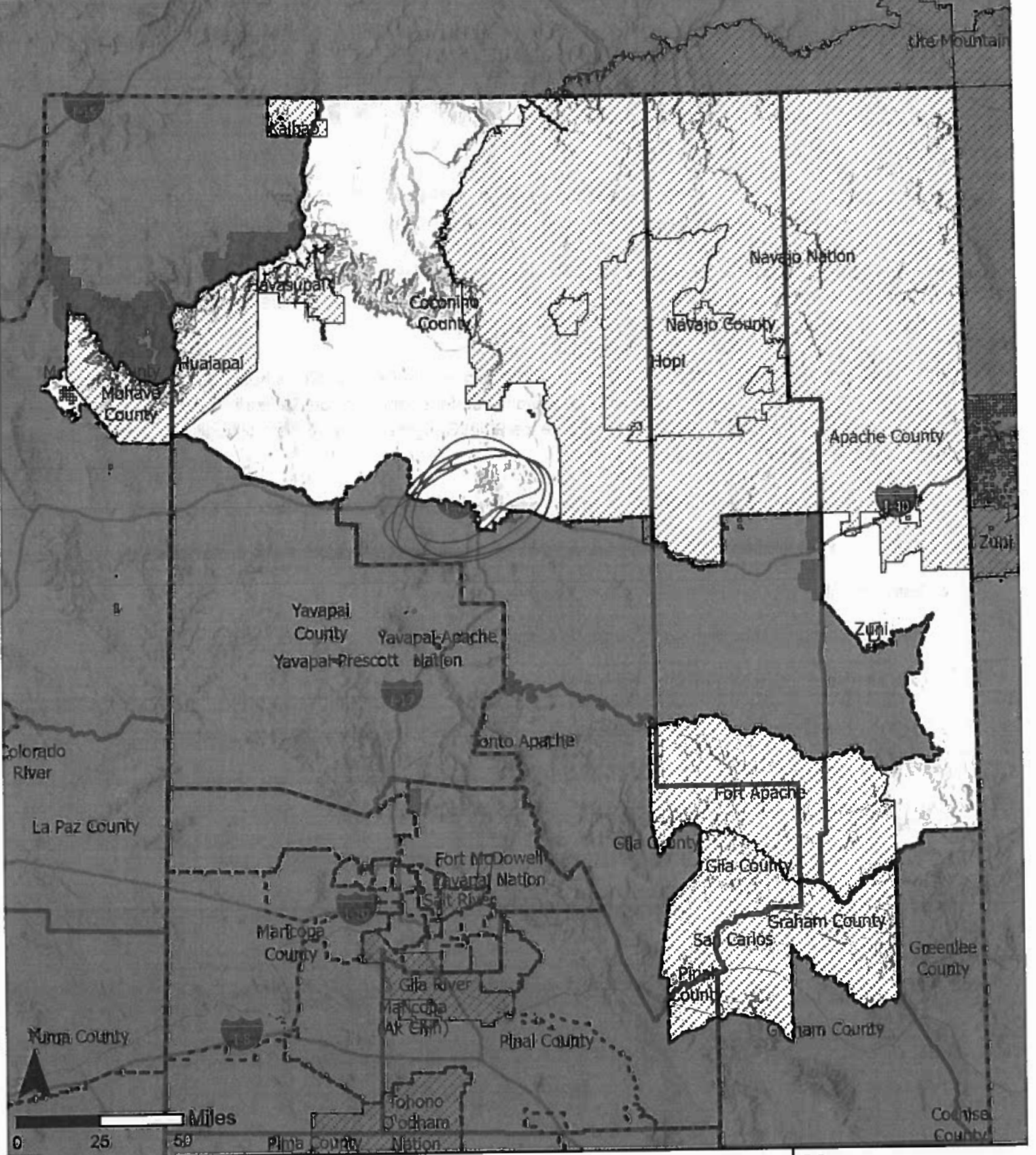
a. Are you a paid representative? ¿Eres un representante pagado? Yes/Si No

b. Name of organization / Nombre de la organización: _____

Comments / Comentarios:



Splitting Flagstaff is gerrymandering. Flagstaff
should be the major city of the new LD7.
Putting part of the city in the Native District
when they are not needed is an unconstitutional
gerrymander.

(over / siguiente)



AZ Approved Draft Map Legislative District: 6

This plan was officially adopted on October 28, 2021 as the official Legislative Draft Map. <https://redistricting-trc-az.hub.arcgis.com/pages/draft-maps>

-  Approved Draft Map Legislative Districts
-  Arizona Counties
-  Arizona Tribal Reservations

ARIZONA
INDEPENDENT RED-DISTRICTING COMMISSION



es