



Arizona State University

Arizona Water Policy

Independent Redistricting Commission – August 31, 2021

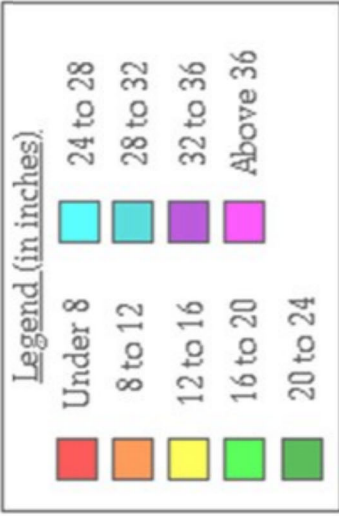


Arizona State University

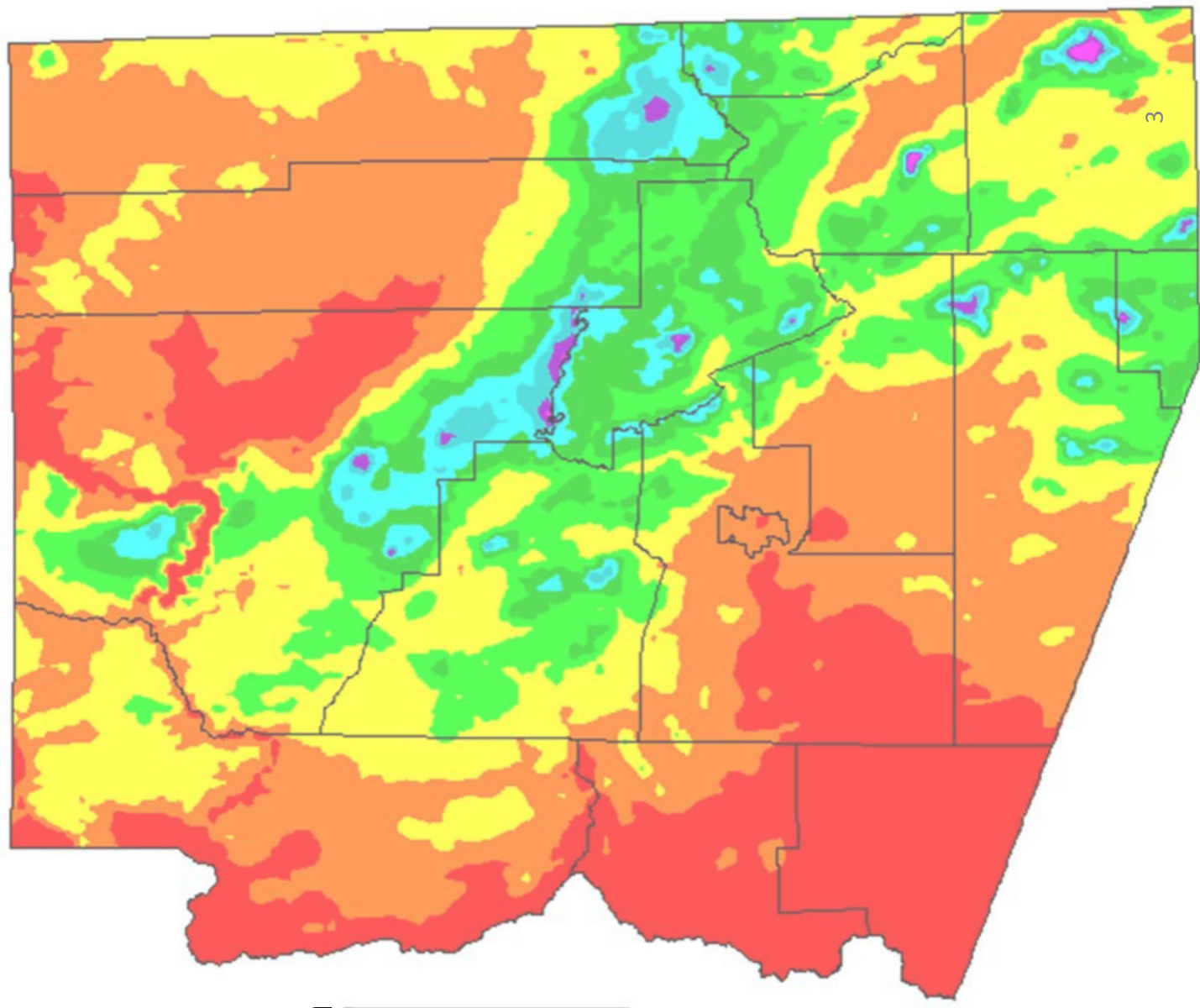
Mission: promote informed public dialogue on critical water issues in Arizona and the West

- **non-partisan**
- **research & analysis**
- **historical understanding**

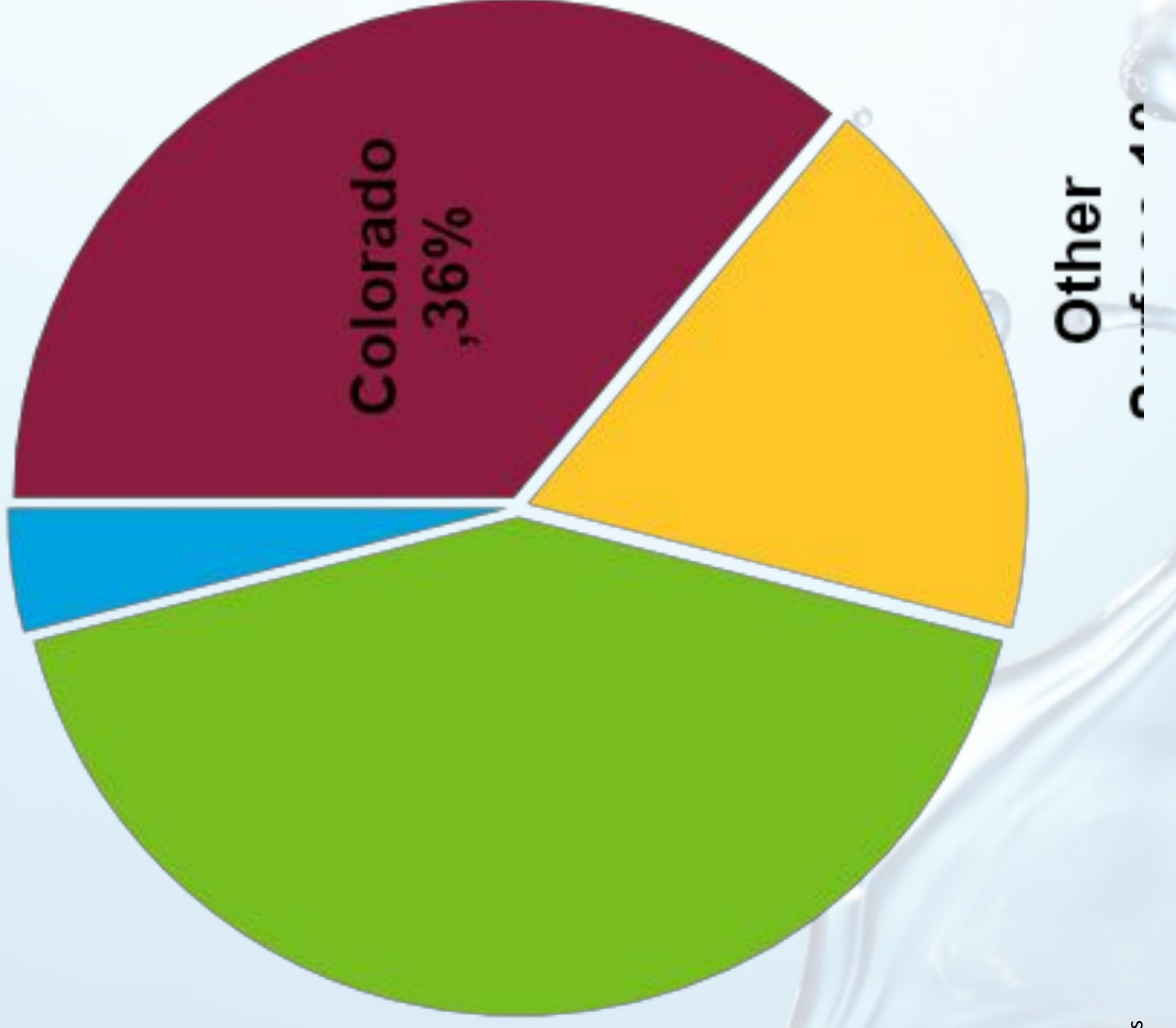
Annual Precipitation



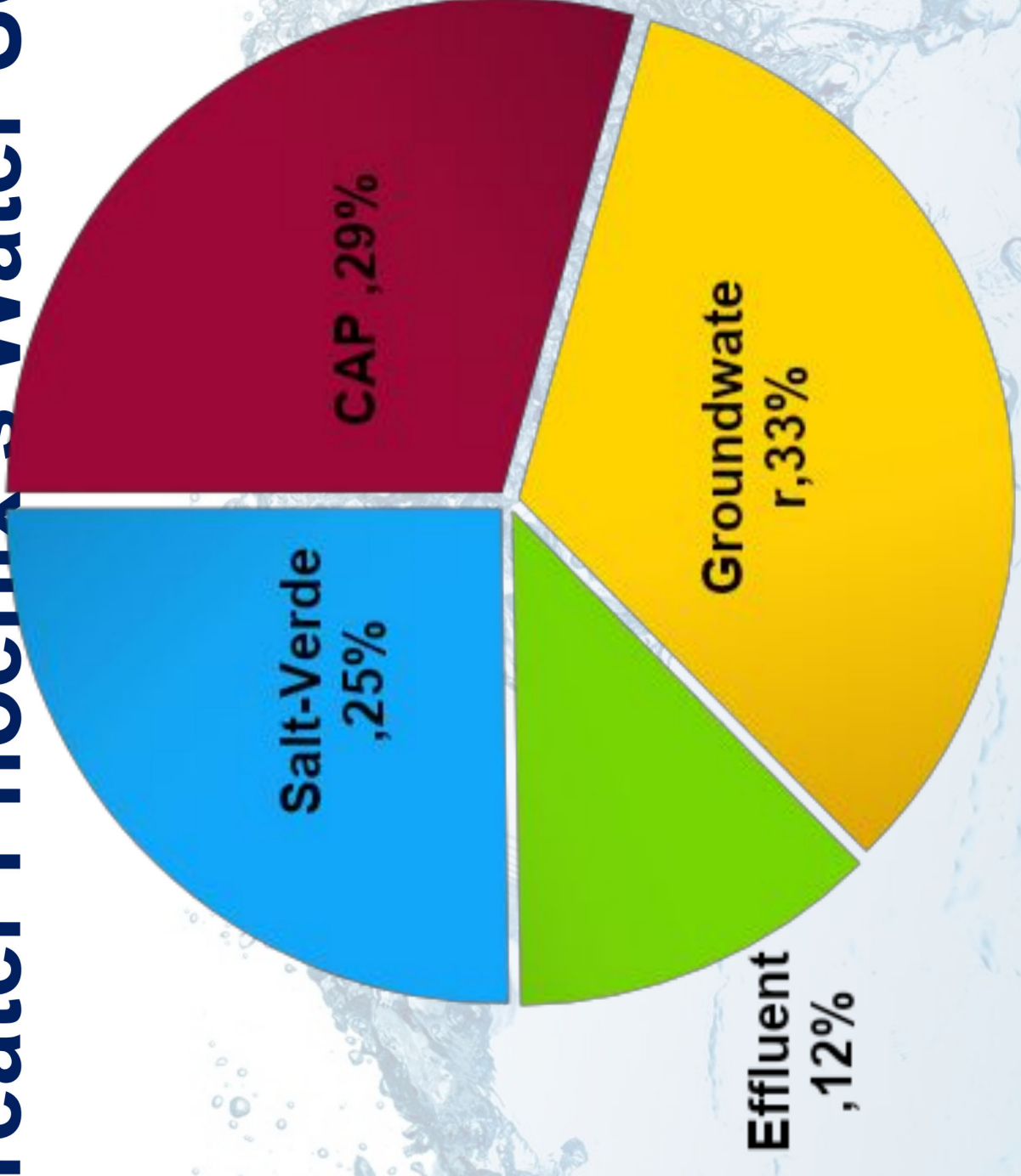
Period: 1961-1990



Arizona's Sources of Water

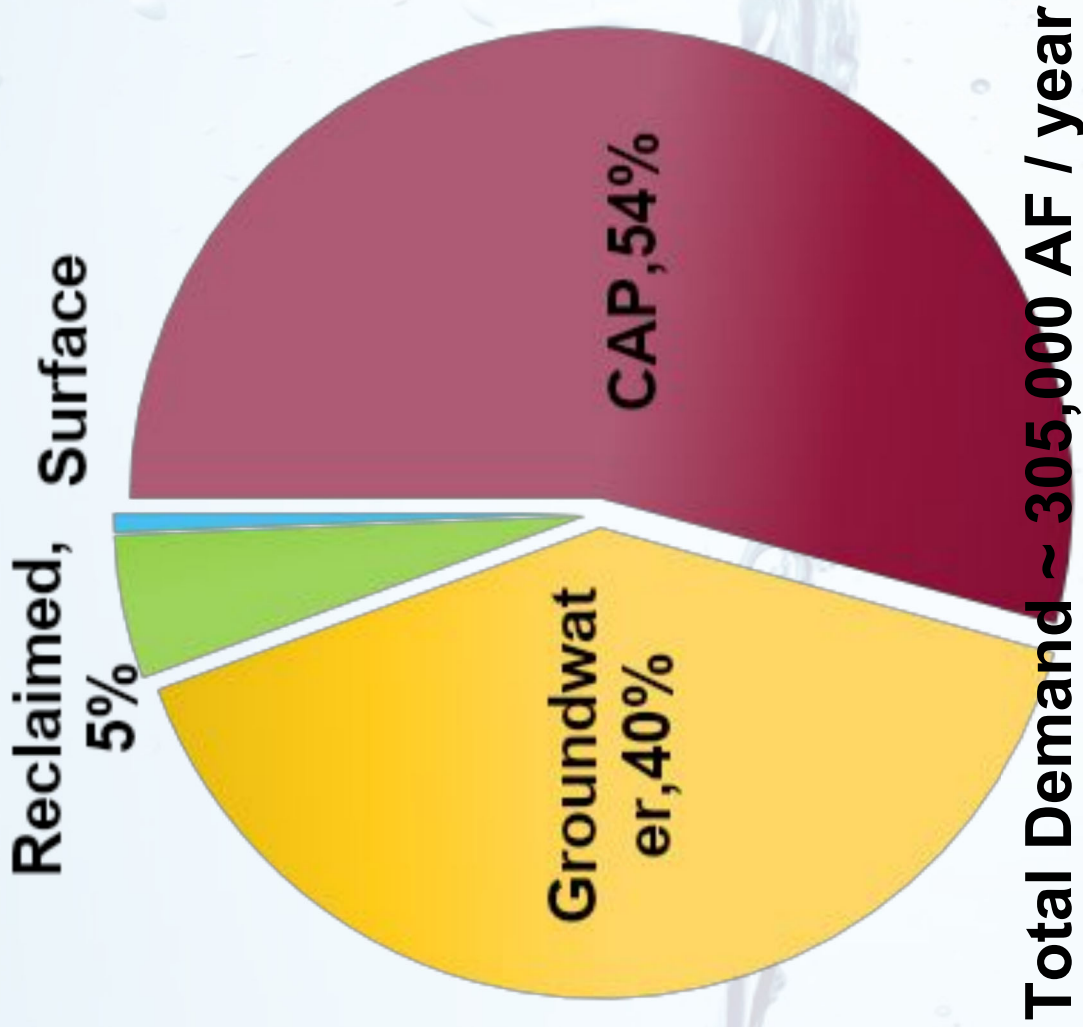


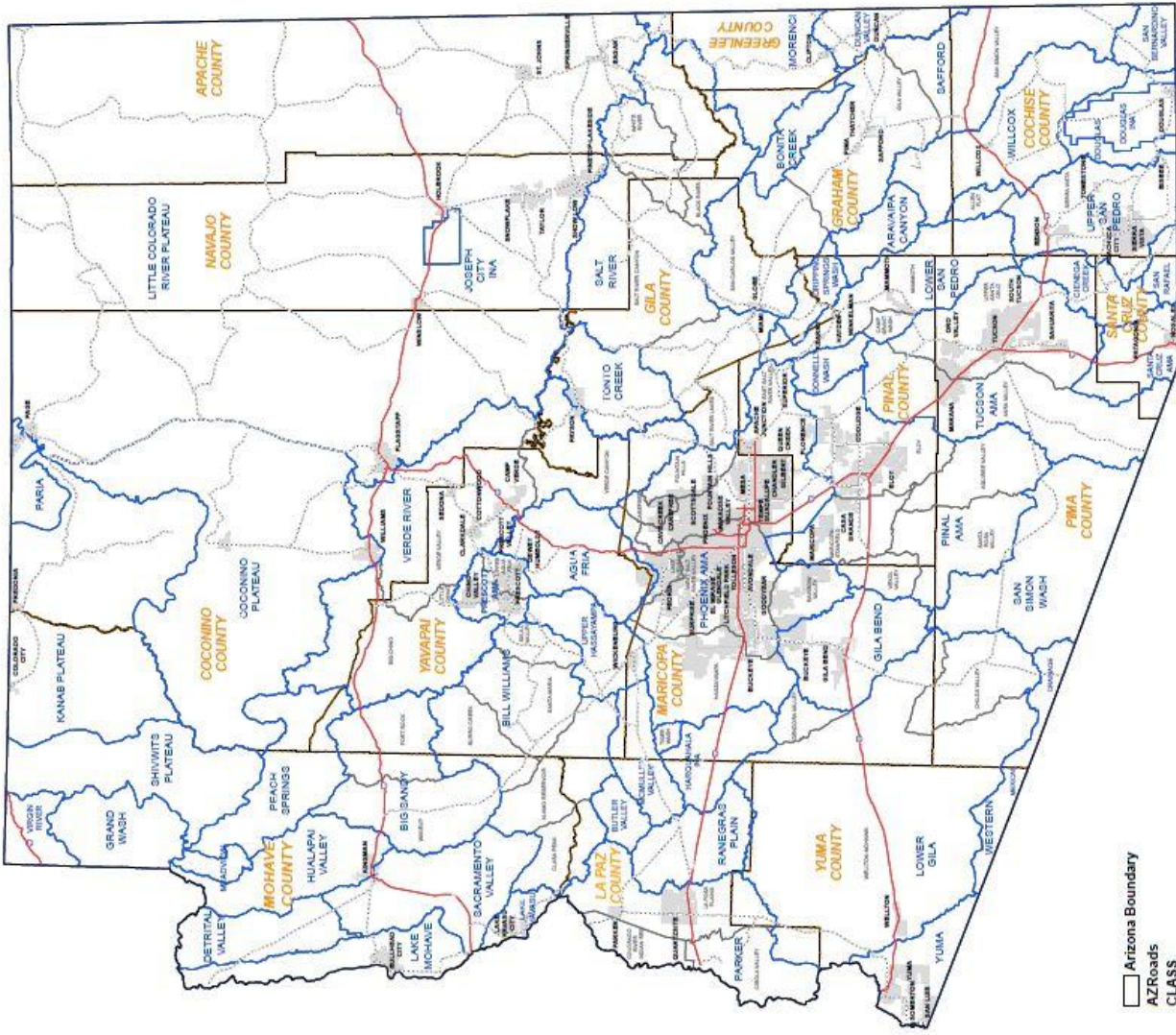
Greater Phoenix's Water Sources



Source: Arizona Dept. of Water Resources, AMA Data (2020)

Greater Tucson's Water Sources





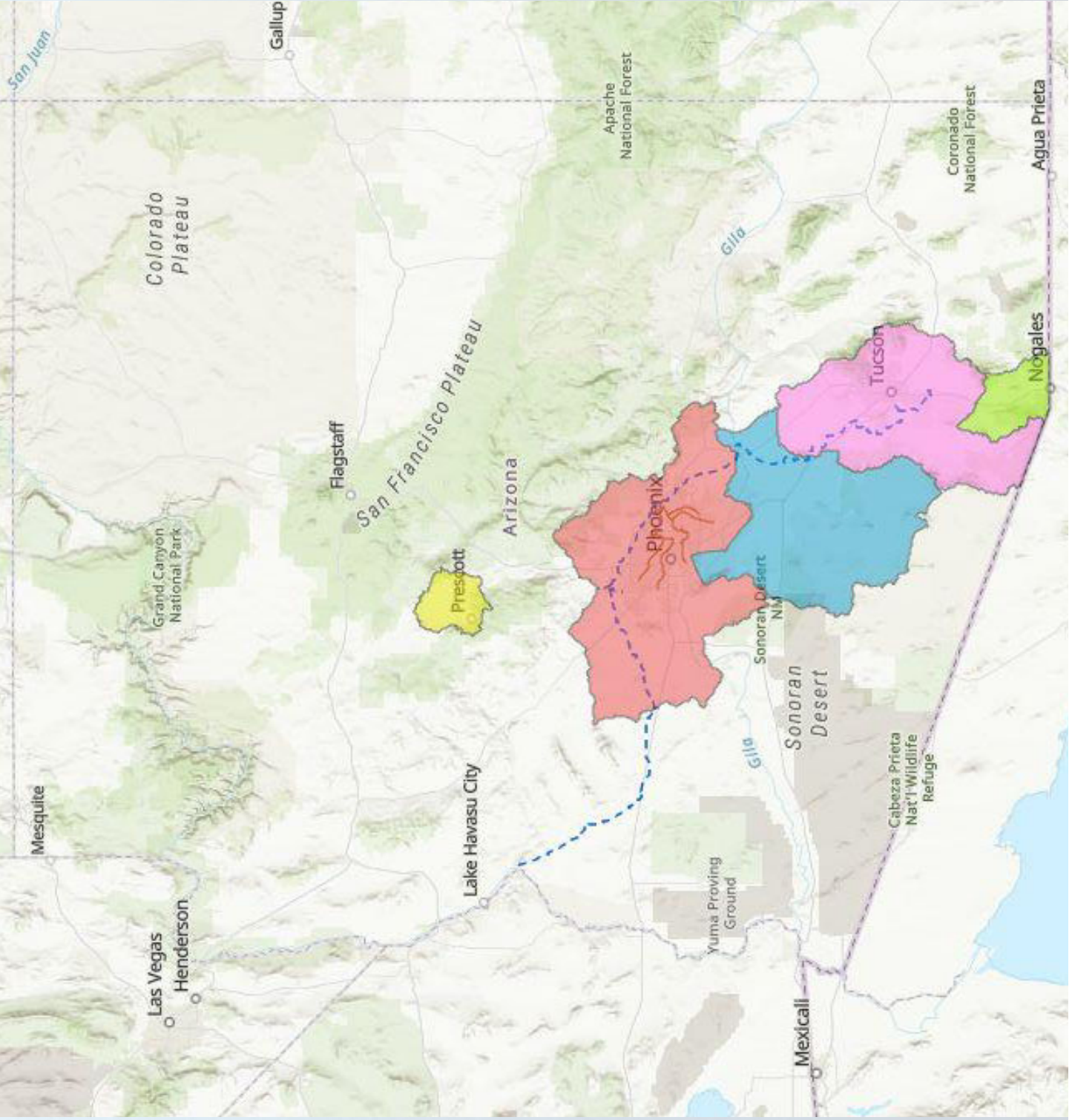
- Arizona Boundary
- AZ Roads CLASS**
- Interstate
- Federal
- State
- Indian
- DWR Basin
- Subbasin
- County



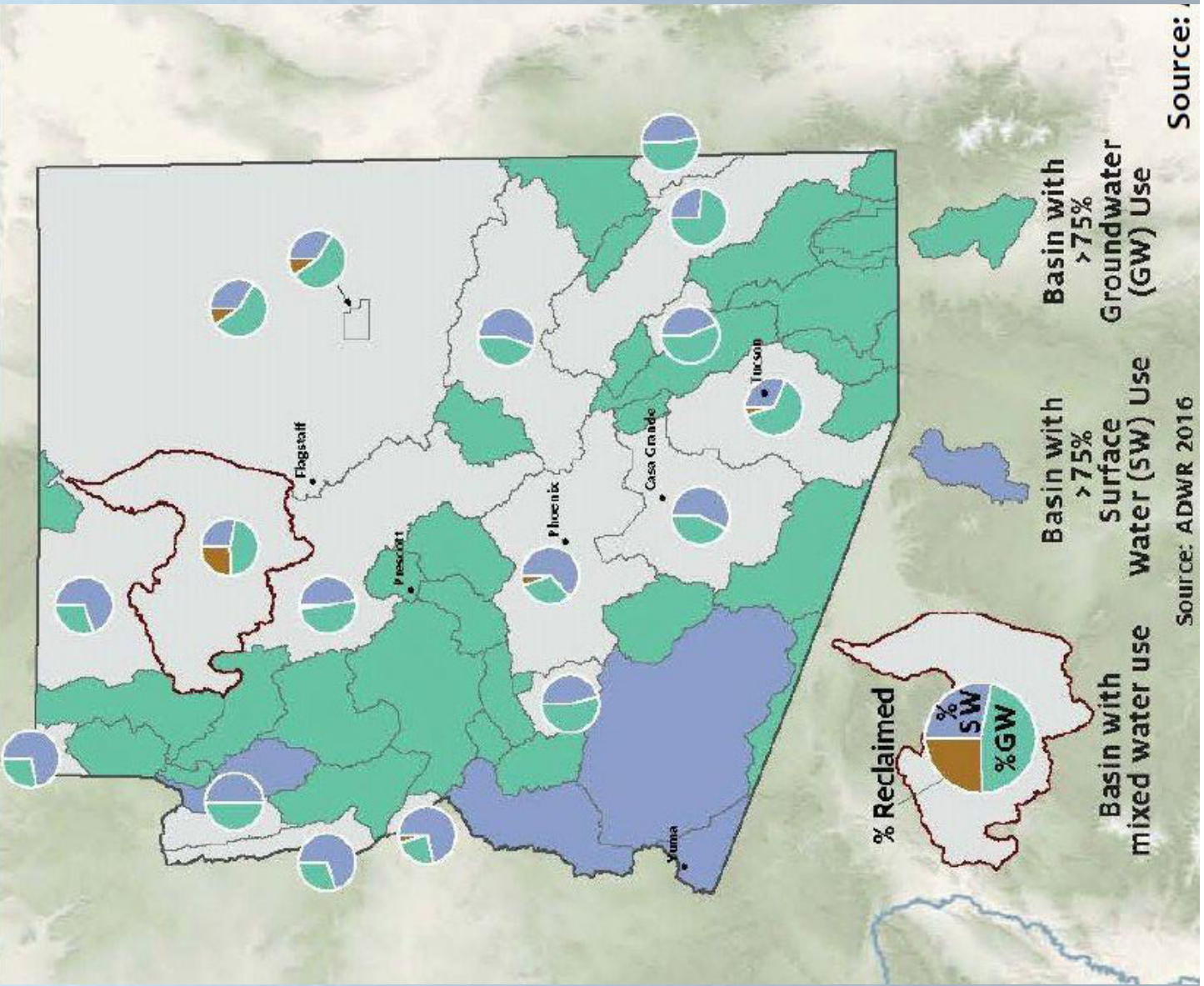
Groundwater Basins and Sub-Basins



Map of Arizona
 Groundwater Basins and Sub-Basins
 Arizona Department of Water Resources
 2010

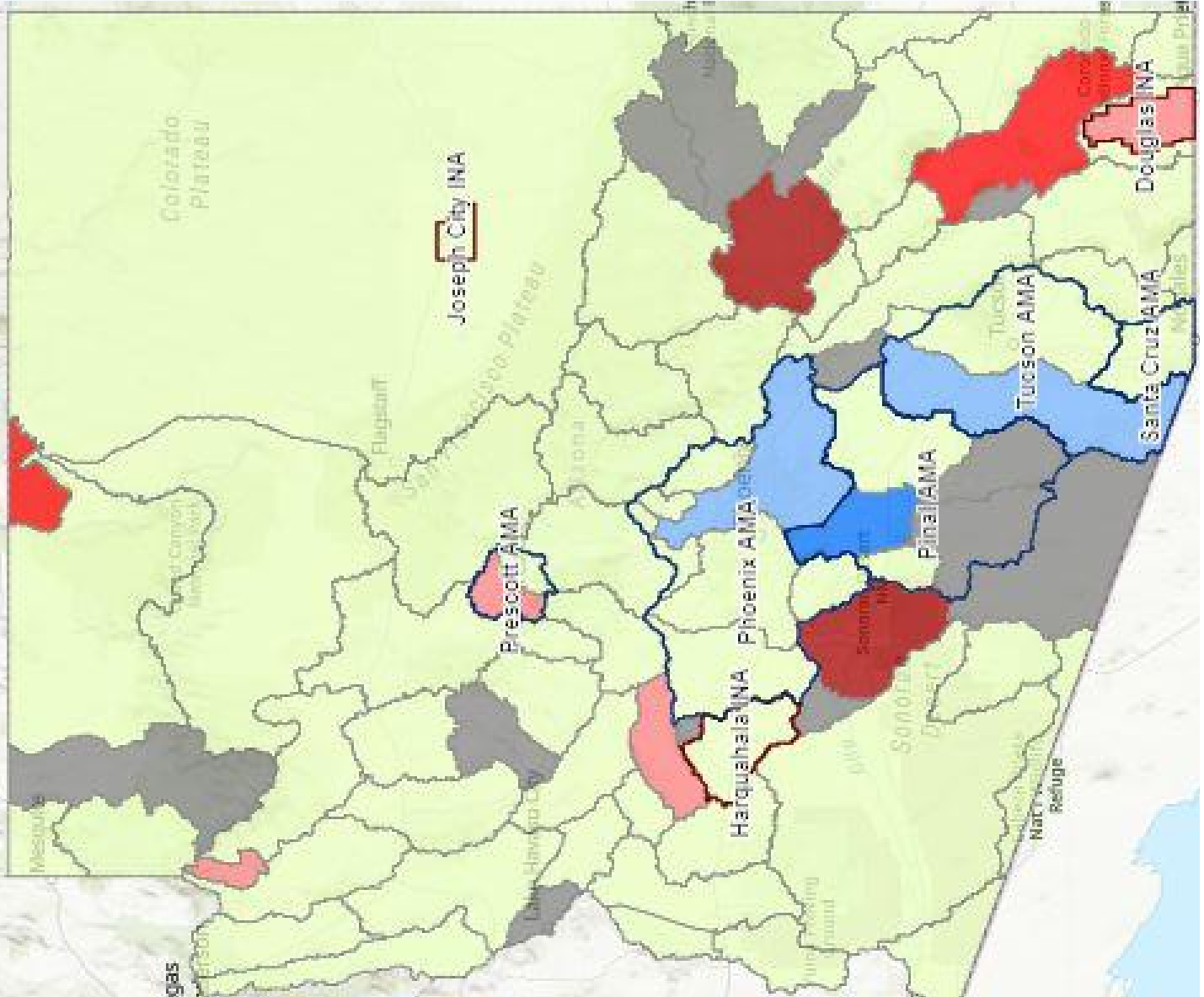


Lake Mead Elevation	AZ [2007]	AZ [Plan]	AZ TOTAL	NV [2007]	NV [Plan]	NV TOTAL	CA [2007]	CA [Plan]	CA TOTAL	BOR	TOTAL
1090-1075	0	192K	192K	0	8K	8K	0	0	0	100k	300k
1075-1050	320K	192K	512K	13K	8K	21K	0	0	0	100k	633k
1050-1045	400K	192K	592K	17K	8K	25K	0	0	0	100k	717k
1045-1040	400K	240K	640K	17K	10K	27K	0	200K	200K	100k	967k
1040-1035	400K	240K	640K	17K	10K	27K	0	250K	250K	100k	1,017k
1035-1030	400K	240K	640K	17K	10K	27K	0	300K	300K	100k	1,067k
1030-1025	400K	240K	640K	17K	10K	27K	0	350K	350K	100k	1,117k
<1025	480K	240K	720K	20K	10K	30K	0	350K	350K	100k	1,200k



Source: ADWR 2016

Source: ADWR 2016



AMA/INA
≤35 GPM
(exempt)

2%
of total statewide
pumping capacity

31%
of all the wells in the
state

NOT required to meter
and report groundwater
withdrawals

AMA/INA
>35 GPM
(non-exempt)

48%
of total statewide
pumping capacity

10%
of all the wells in the
state

required to meter and
report groundwater
withdrawals

Non-AMA/INA
≤35 GPM

3%
of total statewide
pumping capacity

46%
of all the wells in the
state

NOT required to meter
and report groundwater
withdrawals

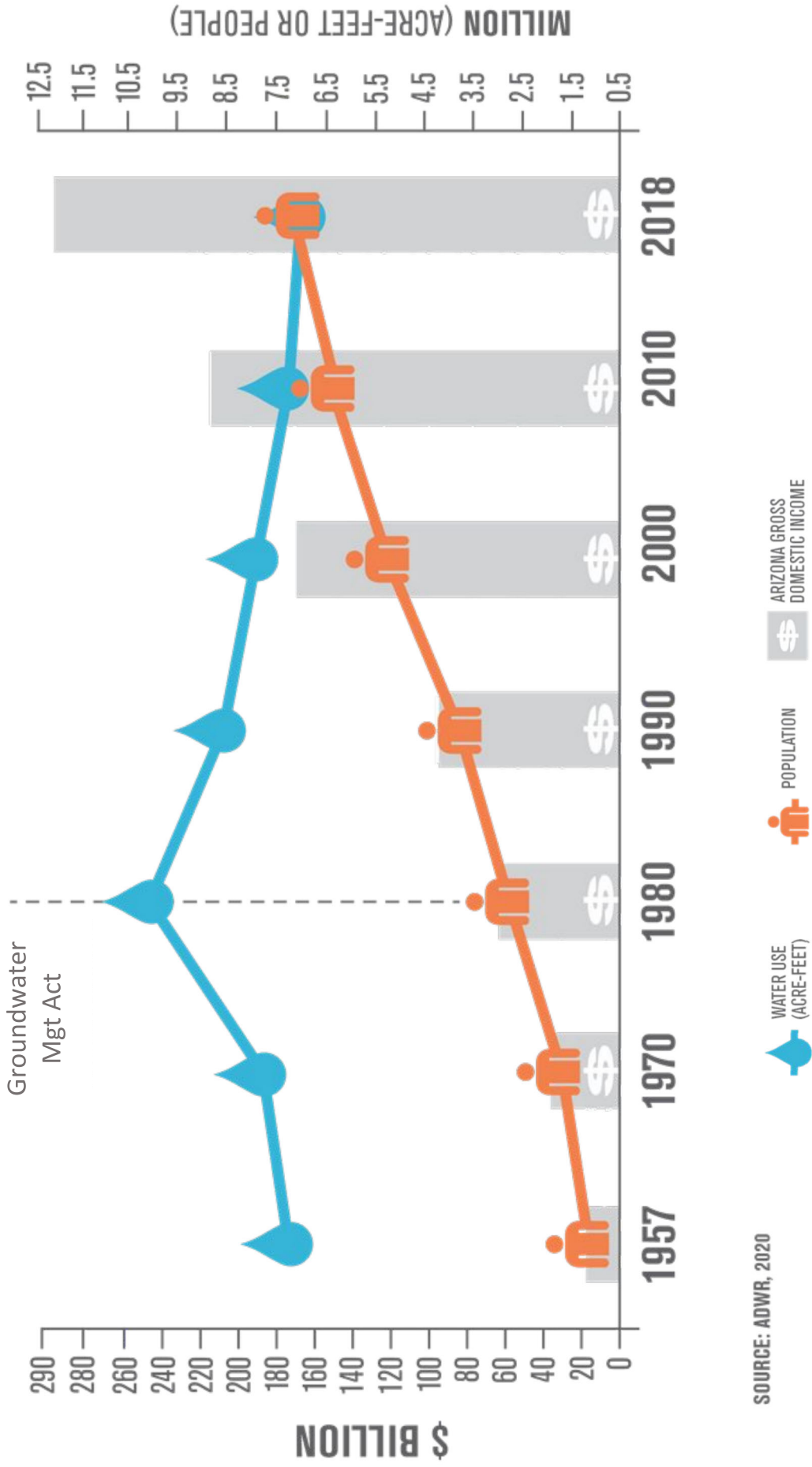
Non-AMA/INA
>35 GPM

47%
of total statewide
pumping capacity

13%
of all the wells in the
state

Community Water
Systems must report
water delivered annually
(can estimate)

Arizona Water Demand & Growth



SOURCE: ADWR, 2020



Arizona Water Blueprint

azwaterblueprint.asu.edu

ASU® **Kyl Center for Water Policy**
at Morrison Institute

Arizona State University

Sarah Porter

602-828-0866

s.porter@asu.edu